

ABILENE, TEXAS

# VOR/DME RWY 34

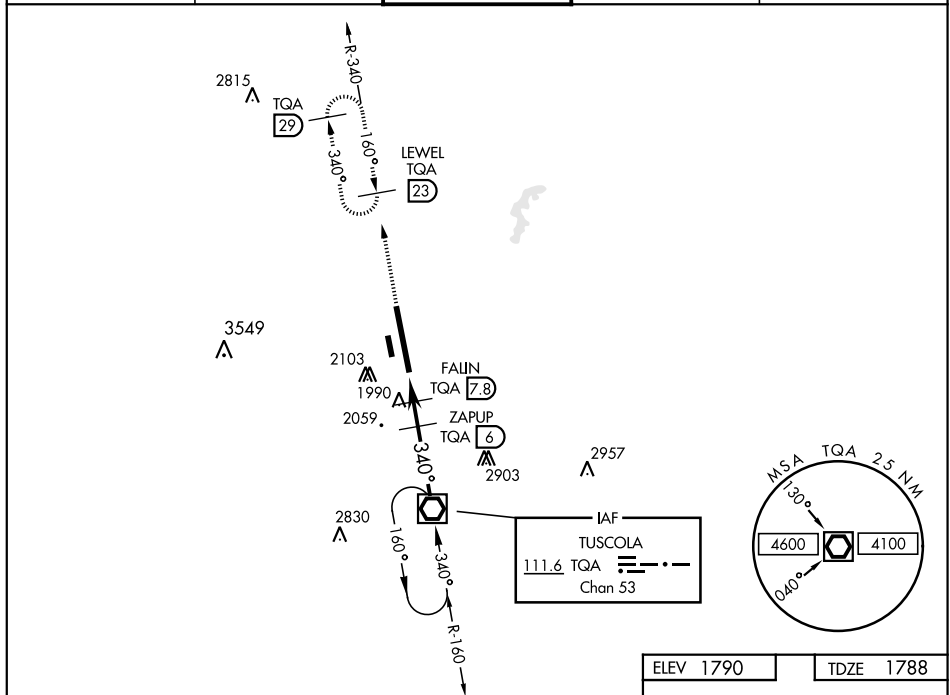
VOR/DME TQA <b>111.6</b> Chan <b>53</b>	APCH CRS <b>340°</b>	Rwy Idg <b>13,500</b> TDZE <b>1788</b> Arpt Elev <b>1790</b>
---	-------------------------	--

AL-2 [USAF]

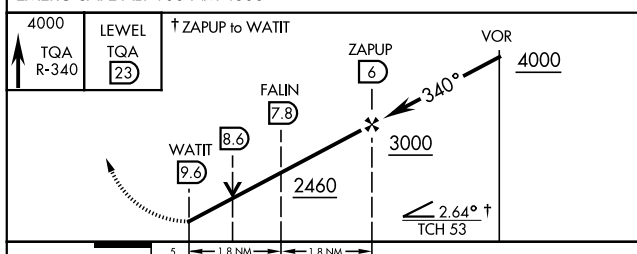
DYESS AFB (KDYS)

* When ALS inop, increase CAT AB RVR to 55 and vis to 1 mile, CAT CDE RVR vis to 1 3/8 miles. ** Circling to other than Rwy 16 NA	ALSF-1 	MISSED APPROACH: Climb to 4000 via TQA VOR/DME R-340 to LEWEL and hold.
--	------------	---

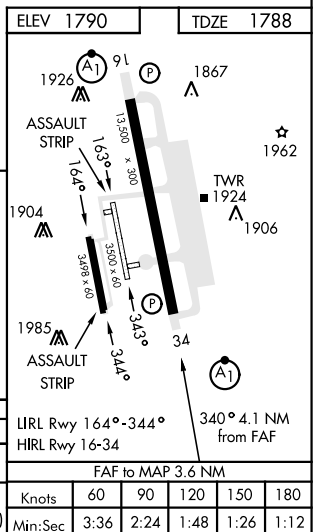
ATIS ★ <b>269.175</b>	ABILENE APP CON <b>125.0 338.3</b> EAST <b>127.2 282.3</b> WEST	DYESS TOWER <b>133.0 257.675</b>	GND CON <b>118.35 275.8</b>	ASR
--------------------------	---	-------------------------------------	--------------------------------	-----



EMERG SAFE ALT 100 NM 4600



CATEGORY	A	B	C	D	E
S-34 *	2260/24 472 (500-1/2)		2260/50 472 (500-1)		
CIRCLING **	2300-1 510 (600-1)	2320-1 530 (600-1)	2460-1 3/4 670 (700-1 3/4)	2460-2 670 (700-2)	2460-2 1/4 670 (700-2 1/4)



ABILENE, TEXAS

32°25' -99°51'W

DYESS AFB (KDYS)

Amtd 3 10NOV16

# VOR/DME RWY 34