
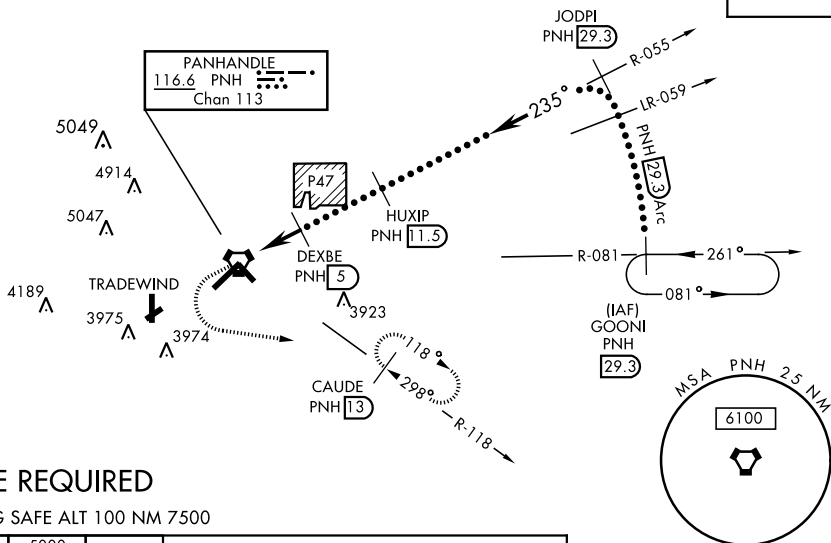
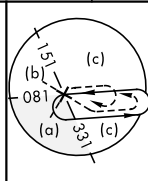


VORTAC PNH 116.6 Chan 113		APCH CRS 235°	Rwy Idg 13,502 TDZE 3606 Arpt Elev 3607	JAL-19 [USAF]	RICK HUSBAND AMARILLO INTL (KAMA)		
V *When ALS inop, increase CAT CDE vis to 1½ mile. **When ALS inop, increase CAT CDE vis to 1½ mile. ALT MINS N/A when local altimeter not available.				MALSR 	MISSED APPROACH: Climb to 4100 then climbing left turn to 5000 on heading 090° and PNH VOTRAC R-118 to CAUDE INT/PNH 13 DME and hold.		
ATIS 118.85 350.3		AMARILLO APP CON 119.5 307.0		AMARILLO TOWER ★ 118.3 0 257.9	GND CON 121.9 348.6	CLNC DEL 121.65 239.275	ASR

When local altimeter setting not received,
use Borger altimeter setting.

[illegible]