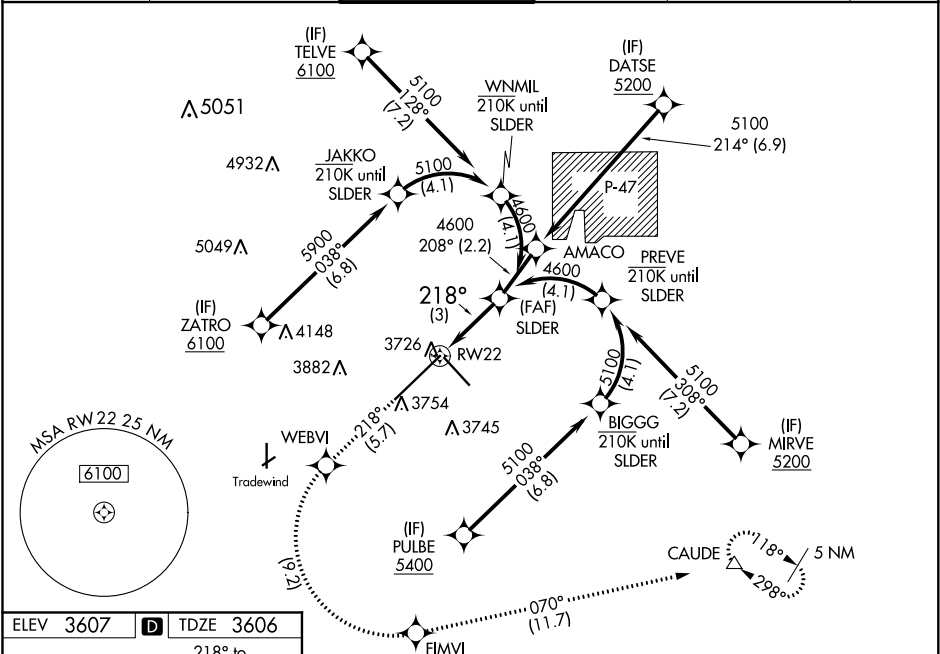


APP CRS	Rwy Idg	13502
218°	TDZE	3606
	Apt Elev	3607

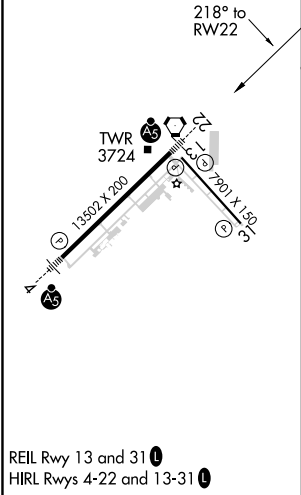
RNAV (RNP) Z RWY 22
RICK HUSBAND AMARILLO INTL (AMA)

ASR For uncompensated Baro-VNAV systems, procedure NA below -14°C (7°F) or above 52°C (125°F). RF required. For inop ALS, increase RNP 0.14 all Cats visibility to ¾ SM and increase RNP 0.30 all Cats visibility to 1½ SM.	MALSR 	MISSED APPROACH: (Do not exceed 185 K until FIMVI) Climb to 5400 on track 218° to WEBVI, left turn to FIMVI, then track 070° to CAUDE and hold.
---	------------------	--

ATIS 118.85 350.3	AMARILLO APP CON★ 119.5 307.0	AMARILLO TOWER★ 118.3(CTAF) 257.9	GND CON 121.9 348.6	CLNC DEL 121.65 239.275	UNICOM 122.95
-----------------------------	---	---	-------------------------------	-----------------------------------	-------------------------



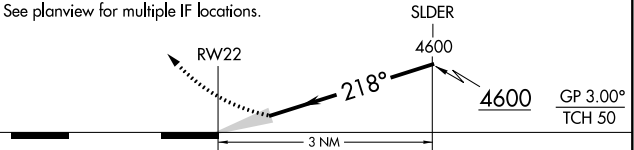
ELEV 3607	D	TDZE 3606
-----------	----------	-----------



RNAV 1 - GPS or RADAR REQUIRED

VGSI and RNAV glidepath not coincident (VGSI Angle 3.00/TCH 77).	5400 tr 218°	WEBVI	FIMVI	CAUDE tr 070°
--	-----------------	-------	-------	------------------

See planview for multiple IF locations.



CATEGORY	A	B	C	D
RNP 0.14 DA		3884-½	278 (300-½)	
RNP 0.30 DA		3958-¾	352 (400-¾)	

AUTHORIZATION REQUIRED