

APP CRS	Rwy Idg	13502
038°	TDZE	3607
	Apt Elev	3607

RNAV (RNP) Z RWY 4

RICK HUSBAND AMARILLO INTL (AMA)

ASR

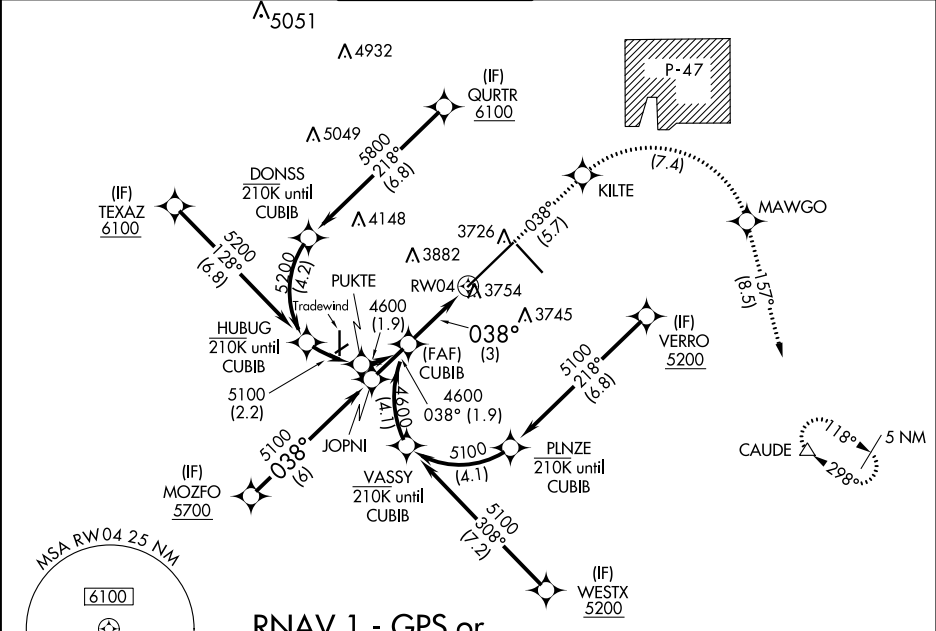
For uncompensated Baro-VNAV systems, procedure NA below -14°C (7°F) or above 53°C (128°F). RF required. GPS required. For inop ALS, increase RNP 0.30 all Cats visibility to 1 1/2 SM.

MALSRL

MISSED APPROACH:

(Do not exceed 185K until MAWGO) Climb to 5400 on track 038° to KILTE, right turn to MAWGO, then track 157° to CAUDE and hold.

ATIS	AMARILLO APP CON *	AMARILLO TOWER *	GND CON	CLNC DEL	UNICOM
118.85 350.3	119.5 307.0	118.3(CTAF) 257.9	121.9 348.6	121.65 239.275	122.95



VGSI and RNAV glidepath not coincident (VGSI Angle 3.00/TCH 61).

5400

KILTE

MAWGO

CAUDE

See planview for multiple IF locations.

GP 3.00°

TCH 44

4600

038°

3 NM

RW04

CATEGORY	A	B	C	D
RNP 0.12 DA		3969/40	362 (400-3/4)	
RNP 0.30 DA		4019/50	412 (500-1)	

AUTHORIZATION REQUIRED

ELEV 3607

D

TDZE 3607

REIL Rwy 13 and 31

HIRL Rlys 4-22 and 13-31

SC-2, 03 DEC 2020 to 31 DEC 2020

SC-2, 03 DEC 2020 to 31 DEC 2020