

WAAS CH 97618 W17A	APP CRS 175°	Rwy Idg TDZE 2562 Apt Elev 2573
--	------------------------	---

RNAV (GPS) RWY 17

BIG SPRING McMAHON-WRINKLE (BPG)

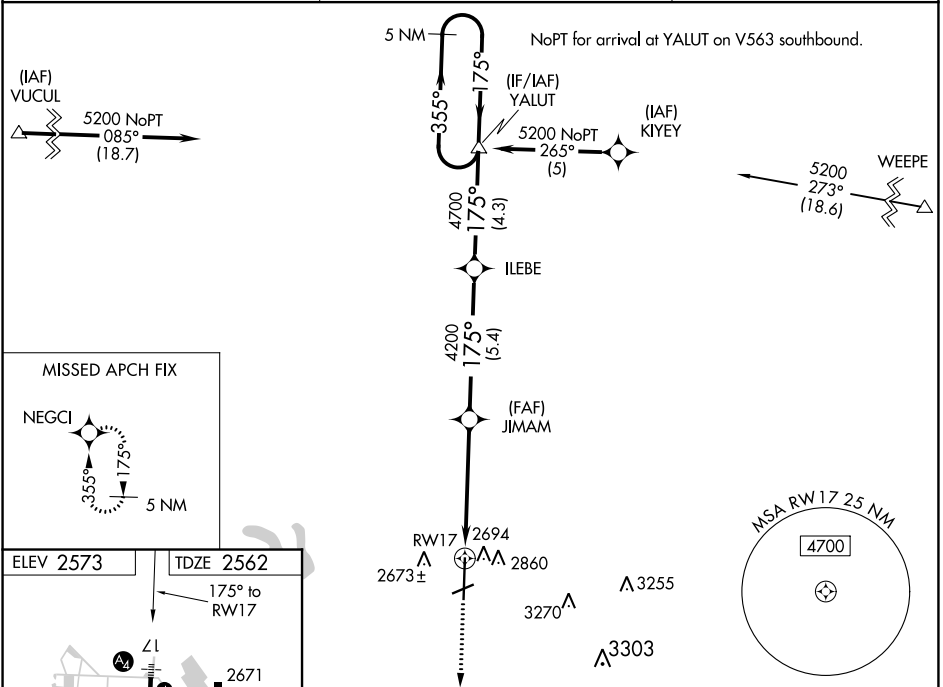
RNP APCH.

Inoperative table does not apply to LNAV/VNAV and LNAV Cat C. When local altimeter setting not received, use Midland Intl Air and Space Port altimeter setting: increase all DA 130 feet and all MDA 140 feet; increase LPV and LNAV/VNAV all Cals and LNAV Cat C and D visibility ½ SM. Baro-VNAV NA when using Midland Intl Air and Space Port altimeter setting. VDP NA with Midland Intl Air and Space Port altimeter setting. For uncompensated Baro-VNAV systems LNAV/VNAV NA below -20°C or above 43°C.

SSALS

MISSED APPROACH: Climb to 4600 direct NEGCI and hold.

AWOS-3 118.025	FORT WORTH CENTER 133.7 350.2	UNICOM 122.8 (CTAF) 0
--------------------------	---	---------------------------------



MIRL Rwy's 6-24 and 17-35

4600		NEGCI		5 NM	
				Holding Pattern	
*LNAV only.		*1.8 NM to RW17		JIMAM 4200	
				ILEBE 4700	
1.8 NM		3.2 NM		5.4 NM	
4200		4200		4.3 NM	
355°		175°		YALUT 5200	
←175°					
				GP 3.00°	
				TCH 45	
CATEGORY		A		B	
LPV DA		2812-1		250 (300-1)	
LNAV/VNAV DA		3040-1¾		478 (500-1¾)	
LNAV MDA		3160-¾ 598 (600-¾)		3160-1½ 598 (600-1½)	
				3160-1¾ 598 (600-1¾)	