

WAAS CH 45632 W24A	APP CRS 240°	Rwy Idg 4601 TDZE 2573 Apt Elev 2573
--	------------------------	---

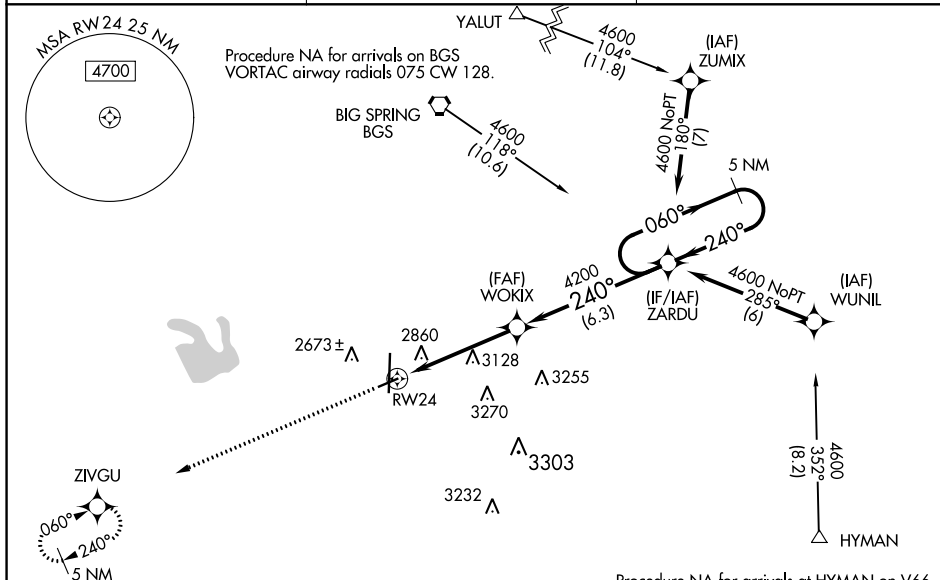
RNAV (GPS) RWY 24
BIG SPRING McMAHON-WRINKLE (BPG)

RNP APCH.

V For uncompensated Baro-VNAV systems, LNAV/VNAV NA below -20°C or above 54°C. When local altimeter setting not received, use Midland Inl Air and Space Port altimeter setting: increase all DA 130 feet and all MDA 140 feet; increase LPV and LNAV/VNAV Cats A/B visibility $\frac{1}{2}$ SM, and LNAV Cat A visibility $\frac{1}{4}$ SM. Baro-VNAV and VDP NA with Midland Inl Air and Space Port altimeter setting. Rwy 24 helicopter visibility reduction below $\frac{3}{4}$ SM NA.

MISSED APPROACH: Climb to 4600 direct ZIVGU and hold.

AWOS-3 118.025	FORT WORTH CENTER 133.7 350.2	UNICOM 122.8 (CTAF) 1
--------------------------	---	--



Procedure NA for arrivals at HYMAN on V66 southwest bound, and on V94 westbound.

ELEV 2573		TDZE 2573
-----------	--	-----------

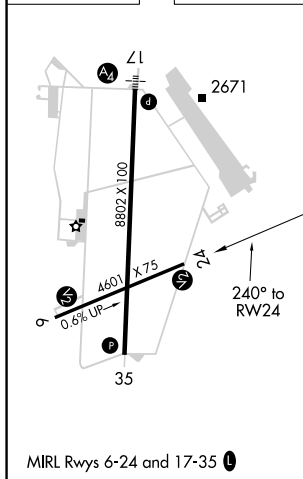


Diagram illustrating the RNAV glidepath for ZIVGU VOR/DME. The glidepath starts at RW24 (2.1 NM from ZIVGU) and proceeds to WOKIX (4200 feet) and ZARDU. The RNAV glidepath is 5 NM long. The RNAV glidepath is 5 NM long. The RNAV glidepath is 5 NM long.