

WAAS CH <b>86332</b> <b>W06A</b>	APP CRS <b>060°</b>	Rwy Idg TDZE Apt Elev	<b>4601</b> <b>2563</b> <b>2573</b>
--	------------------------	-----------------------------	---

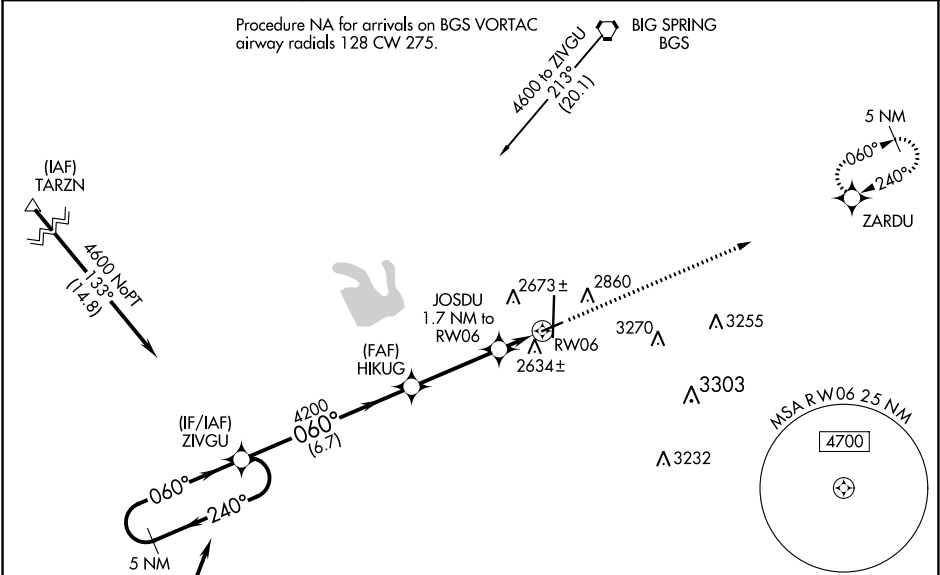
**RNAV (GPS) RWY 6**  
BIG SPRING McMAHON-WRINKLE (BPG)

RNP APCH.

**⚠** For uncompensated Baro-VNAV systems, LNAV/VNAV NA below -20°C or above 54°C.  
**⚠** When local altimeter setting not received, use Midland Intl Air and Space Port altimeter setting and increase all DA 130 feet, all MDA 140 feet, and increase LPV all Cts visibility 3/8 mile and LNAV/VNAV all Cts visibility 1/2 mile. Baro-VNAV and VDP NA with Midland Intl Air and Space Port altimeter setting.

MISSED APPROACH: Climb to 4600 direct ZARDU and hold.

AWOS-3 <b>118.025</b>	FORT WORTH CENTER <b>133.7 350.2</b>	UNICOM <b>122.8 (CTAF) 0</b>
--------------------------	---	---------------------------------



ELEV **2573**      TDZE **2563**

5 NM Holding Pattern		ZVUGU	HIKUG	JOSDU 1.7 NM to RW06	ZARDU
4600 ← 240°		→ 060°	4200	*3120	*LNAV only.
GP 3.00° TCH 47				*1 NM to RW06	RW06
		6.7 NM	3.3 NM	0.7 NM	1 NM
CATEGORY		A	B	C	D
LPV DA		2763-3/4	200 (200-3/4)	NA	
LNAV/VNAV DA		2813-3/4	250 (300-3/4)	NA	
LNAV MDA		2900-1	337 (400-1)	NA	

SC-2, 03 DEC 2020 to 31 DEC 2020

SC-2, 03 DEC 2020 to 31 DEC 2020