

VORTAC BGS 117.2 Chan 119	APP CRS 359°	Rwy Idg 8802 TDZE 2563 Apt Elev 2573
---	------------------------	---

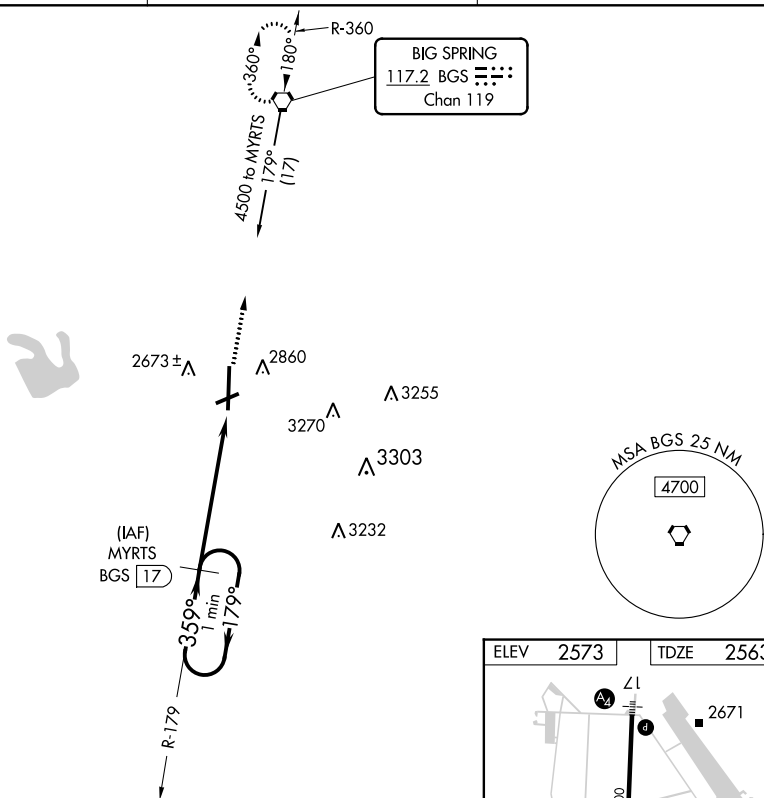
VOR/DME RWY 35

BIG SPRING McMAHON-WRINKLE (BPG)

T When VGSI inoperative, Circling Rwy 6 NA at night. Circling NA east of Rwy 17-35.
A VDP NA when using Midland Intl Air and Space Port altimeter setting. When local altimeter setting not received, use Midland Intl Air and Space Port altimeter setting and increase all MDA 140 feet, increase S-35 Cats C and D and Circling Cats C and D visibility $\frac{1}{4}$ mile.

MISSED APPROACH: Climb to 4500
direct to BGS VORTAC and hold.

AWOS-3 118.025	FORT WORTH CENTER 133.7 350.2	UNICOM 122.8 (CTAF) 0
--------------------------	---	--

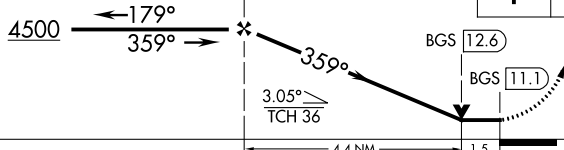


One Minute Holding Pattern

MYRTS
BGS 17

4500

BGS



CATEGORY

A

B

C

S-35

309

517 (400.1)

3080-1½

3080-1³/₄

CIRCLING

308

507 (600-1)

3080-1½

3140-2

359° 5.9 NM
from FAF—

MIRL Rwy 6-24 and 17-35 **L**