

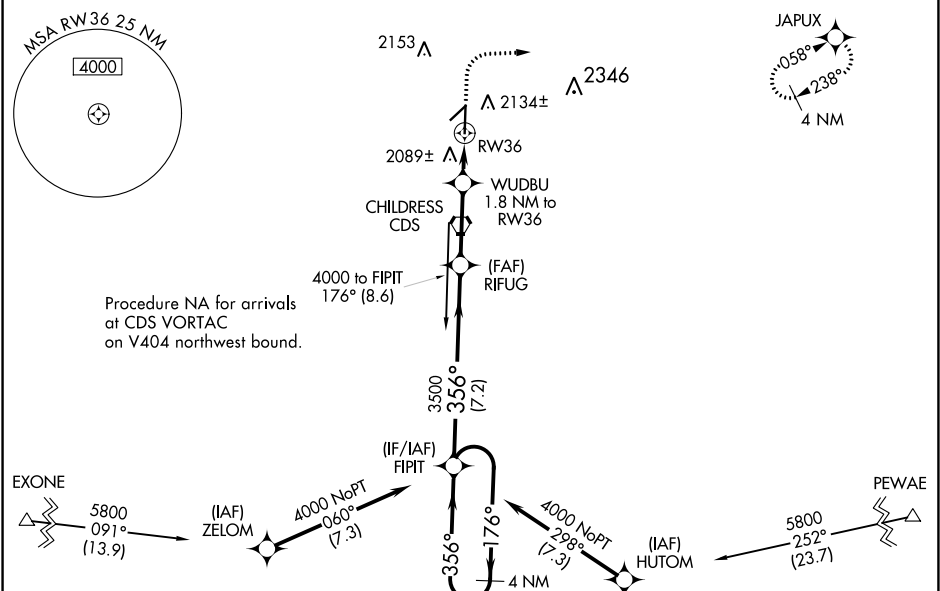
WAAS CH 97432 W36A	APP CRS 356°	Rwy Idg TDZE 1954 Apt Elev 1954	5949 1954 1954
--	------------------------	---	---

RNAV (GPS) RWY 36
CHILDRESS MUNI (CDS)

⚠ Circling to Rwy 4, 18, 22 NA at night. For uncompensated Baro-VNAV systems, LNAV/VNAV NA below -10°C (14°F) or above 54°C (130°F). DME/DME RNP-0.3 NA. When local altimeter setting not received, use Altus/Quartz Mountain Rgnl altimeter setting and increase all DA 188 feet, all MDA 200 feet and increase LPV all Cnts visibility 3/8 mile, LNAV/VNAV all Cnts visibility 3/4 mile, LNAV Cnts C and D visibility 3/8 mile, Circling Cat C visibility 3/4 mile, and Circling Cat D visibility 1/2 mile. Baro-VNAV and VDP NA with Altus/Quartz Mountain Rgnl altimeter setting.

MISSED APPROACH:
Climb to 2400 then climbing right turn to 4000 direct JAPUX and hold.

ASOS 135.125	FORT WORTH CENTER 133.5 350.35	UNICOM 122.8 (CTAF) 0
------------------------	--	---------------------------------



ELEV 1954		TDZE 1954		
4 NM Holding Pattern		2400 4000 JAPUX		
FIPIT		WUDBU 1.8 NM to RW36 *1.1 NM to RW36 *2560 *LNAV only.		
4000 ← 176° 356° →		3500 3500 3500 3500		
GP 3.00° TCH 40		7.2 NM 2.9 NM 0.7 1.1		
CATEGORY	A	B	C	D
LPV DA	2154-3/4		200 (200-3/4)	
LNAV/VNAV DA	2376-1 1/2		422 (500-1 1/2)	
LNAV MDA	2340-1	386 (400-1)	2340-1 1/8	386 (400-1 1/8)
CIRCLING	2500-1	546 (600-1)	2500-1 1/2 546 (600-1 1/2)	2520-2 566 (600-2)

Diagram of a 4 NM Holding Pattern. The pattern is a series of turns around a point. The first turn is 176° to the left, and the second is 356° to the right. The distance between turns is 3500 feet. The pattern is centered on a 3500-foot segment. The distance from the center to the start of the pattern is 7.2 NM. The distance from the center to the end of the pattern is 2.9 NM. The distance from the center to the start of the pattern is 0.7 NM. The distance from the center to the end of the pattern is 1.1 NM. The pattern is labeled '4 NM Holding Pattern' and 'JAPUX'.

Diagram of a 4 NM Holding Pattern. The pattern is a series of turns around a point. The first turn is 176° to the left, and the second is 356° to the right. The distance between turns is 3500 feet. The pattern is centered on a 3500-foot segment. The distance from the center to the start of the pattern is 7.2 NM. The distance from the center to the end of the pattern is 2.9 NM. The distance from the center to the start of the pattern is 0.7 NM. The distance from the center to the end of the pattern is 1.1 NM. The pattern is labeled '4 NM Holding Pattern' and 'JAPUX'.

Diagram of a 4 NM Holding Pattern. The pattern is a series of turns around a point. The first turn is 176° to the left, and the second is 356° to the right. The distance between turns is 3500 feet. The pattern is centered on a 3500-foot segment. The distance from the center to the start of the pattern is 7.2 NM. The distance from the center to the end of the pattern is 2.9 NM. The distance from the center to the start of the pattern is 0.7 NM. The distance from the center to the end of the pattern is 1.1 NM. The pattern is labeled '4 NM Holding Pattern' and 'JAPUX'.

Diagram of a 4 NM Holding Pattern. The pattern is a series of turns around a point. The first turn is 176° to the left, and the second is 356° to the right. The distance between turns is 3500 feet. The pattern is centered on a 3500-foot segment. The distance from the center to the start of the pattern is 7.2 NM. The distance from the center to the end of the pattern is 2.9 NM. The distance from the center to the start of the pattern is 0.7 NM. The distance from the center to the end of the pattern is 1.1 NM. The pattern is labeled '4 NM Holding Pattern' and 'JAPUX'.

Diagram of a 4 NM Holding Pattern. The pattern is a series of turns around a point. The first turn is 176° to the left, and the second is 356° to the right. The distance between turns is 3500 feet. The pattern is centered on a 3500-foot segment. The distance from the center to the start of the pattern is 7.2 NM. The distance from the center to the end of the pattern is 2.9 NM. The distance from the center to the start of the pattern is 0.7 NM. The distance from the center to the end of the pattern is 1.1 NM. The pattern is labeled '4 NM Holding Pattern' and 'JAPUX'.

Diagram of a 4 NM Holding Pattern. The pattern is a series of turns around a point. The first turn is 176° to the left, and the second is 356° to the right. The distance between turns is 3500 feet. The pattern is centered on a 3500-foot segment. The distance from the center to the start of the pattern is 7.2 NM. The distance from the center to the end of the pattern is 2.9 NM. The distance from the center to the start of the pattern is 0.7 NM. The distance from the center to the end of the pattern is 1.1 NM. The pattern is labeled '4 NM Holding Pattern' and 'JAPUX'.

Diagram of a 4 NM Holding Pattern. The pattern is a series of turns around a point. The first turn is 176° to the left, and the second is 356° to the right. The distance between turns is 3500 feet. The pattern is centered on a 3500-foot segment. The distance from the center to the start of the pattern is 7.2 NM. The distance from the center to the end of the pattern is 2.9 NM. The distance from the center to the start of the pattern is 0.7 NM. The distance from the center to the end of the pattern is 1.1 NM. The pattern is labeled '4 NM Holding Pattern' and 'JAPUX'.

Diagram of a 4 NM Holding Pattern. The pattern is a series of turns around a point. The first turn is 176° to the left, and the second is 356° to the right. The distance between turns is 3500 feet. The pattern is centered on a 3500-foot segment. The distance from the center to the start of the pattern is 7.2 NM. The distance from the center to the end of the pattern is 2.9 NM. The distance from the center to the start of the pattern is 0.7 NM. The distance from the center to the end of the pattern is 1.1 NM. The pattern is labeled '4 NM Holding Pattern' and 'JAPUX'.

Diagram of a 4 NM Holding Pattern. The pattern is a series of turns around a point. The first turn is 176° to the left, and the second is 356° to the right. The distance between turns is 3500 feet. The pattern is centered on a 3500-foot segment. The distance from the center to the start of the pattern is 7.2 NM. The distance from the center to the end of the pattern is 2.9 NM. The distance from the center to the start of the pattern is 0.7 NM. The distance from the center to the end of the pattern is 1.1 NM. The pattern is labeled '4 NM Holding Pattern' and 'JAPUX'.

Diagram of a 4 NM Holding Pattern. The pattern is a series of turns around a point. The first turn is 176° to the left, and the second is 356° to the right. The distance between turns is 3500 feet. The pattern is centered on a 3500-foot segment. The distance from the center to the start of the pattern is 7.2 NM. The distance from the center to the end of the pattern is 2.9 NM. The distance from the center to the start of the pattern is 0.7 NM. The distance from the center to the end of the pattern is 1.1 NM. The pattern is labeled '4 NM Holding Pattern' and 'JAPUX'.

Diagram of a 4 NM Holding Pattern. The pattern is a series of turns around a point. The first turn is 176° to the left, and the second is 356° to the right. The distance between turns is 3500 feet. The pattern is centered on a 3500-foot segment. The distance from the center to the start of the pattern is 7.2 NM. The distance from the center to the end of the pattern is 2.9 NM. The distance from the center to the start of the pattern is 0.7 NM. The distance from the center to the end of the pattern is 1.1 NM. The pattern is labeled '4 NM Holding Pattern' and 'JAPUX'.

Diagram of a 4 NM Holding Pattern. The pattern is a series of turns around a point. The first turn is 176° to the left, and the second is 356° to the right. The distance between turns is 3500 feet. The pattern is centered on a 3500-foot segment. The distance from the center to the start of the pattern is 7.2 NM. The distance from the center to the end of the pattern is 2.9 NM. The distance from the center to the start of the pattern is 0.7 NM. The distance from the center to the end of the pattern is 1.1 NM. The pattern is labeled '4 NM Holding Pattern' and 'JAPUX'.

Diagram of a 4 NM Holding Pattern. The pattern is a series of turns around a point. The first turn is 176° to the left, and the second is 356° to the right. The distance between turns is 3500 feet. The pattern is centered on a 3500-foot segment. The distance from the center to the start of the pattern is 7.2 NM. The distance from the center to the end of the pattern is 2.9 NM. The distance from the center to the start of the pattern is 0.7 NM. The distance from the center to the end of the pattern is 1.1 NM. The pattern is labeled '4 NM Holding Pattern' and 'JAPUX'.

Diagram of a 4 NM Holding Pattern. The pattern is a series of turns around a point. The first turn is 176° to the left, and the second is 356° to the right. The distance between turns is 3500 feet. The pattern is centered on a 3500-foot segment. The distance from the center to the start of the pattern is 7.2 NM. The distance from the center to the end of the pattern is 2.9 NM. The distance from the center to the start of the pattern is 0.7 NM. The distance from the center to the end of the pattern is 1.1 NM. The pattern is labeled '4 NM Holding Pattern' and 'JAPUX'.

Diagram of a 4 NM Holding Pattern. The pattern is a series of turns around a point. The first turn is 176° to the left, and the second is 356° to the right. The distance between turns is 3500 feet. The pattern is centered on a 3500-foot segment. The distance from the center to the start of the pattern is 7.2 NM. The distance from the center to the end of the pattern is 2.9 NM. The distance from the center to the start of the pattern is 0.7 NM. The distance from the center to the end of the pattern is 1.1 NM. The pattern is labeled '4 NM Holding Pattern' and 'JAPUX'.

Diagram of a 4 NM Holding Pattern. The pattern is a series of turns around a point. The first turn is 176° to the left, and the second is 356° to the right. The distance between turns is 3500 feet. The pattern is centered on a 3500-foot segment. The distance from the center to the start of the pattern is 7.2 NM. The distance from the center to the end of the pattern is 2.9 NM. The distance from the center to the start of the pattern is 0.7 NM. The distance from the center to the end of the pattern is 1.1 NM. The pattern is labeled '4 NM Holding Pattern' and 'JAPUX'.

Diagram of a 4 NM Holding Pattern. The pattern is a series of turns around a point. The first turn is 176° to the left, and the second is 356° to the right. The distance between turns is 3500 feet. The pattern is centered on a 3500-foot segment. The distance from the center to the start of the pattern is 7.2 NM. The distance from the center to the end of the pattern is 2.9 NM. The distance from the center to the start of the pattern is 0.7 NM. The distance from the center to the end of the pattern is 1.1 NM. The pattern is labeled '4 NM Holding Pattern' and 'JAPUX'.

Diagram of a 4 NM Holding Pattern. The pattern is a series of turns around a point. The first turn is 176° to the left, and the second is 356° to the right. The distance between turns is 3500 feet. The pattern is centered on a 3500-foot segment. The distance from the center to the start of the pattern is 7.2 NM. The distance from the center to the end of the pattern is 2.9 NM. The distance from the center to the start of the pattern is 0.7 NM. The distance from the center to the end of the pattern is 1.1 NM. The pattern is labeled '4 NM Holding Pattern' and 'JAPUX'.

Diagram of a 4 NM Holding Pattern. The pattern is a series of turns around a point. The first turn is 176° to the left, and the second is 356° to the right. The distance between turns is 3500 feet. The pattern is centered on a 3500-foot segment. The distance from the center to the start of the pattern is 7.2 NM. The distance from the center to the end of the pattern is 2.9 NM. The distance from the center to the start of the pattern is 0.7 NM. The distance from the center to the end of the pattern is 1.1 NM. The pattern is labeled '4 NM Holding Pattern' and 'JAPUX'.

Diagram of a 4 NM Holding Pattern. The pattern is a series of turns around a point. The first turn is 176° to the left, and the second is 356° to the right. The distance between turns is 3500 feet. The pattern is centered on a 3500-foot segment. The distance from the center to the start of the pattern is 7.2 NM. The distance from the center to the end of the pattern is 2.9 NM. The distance from the center to the start of the pattern is 0.7 NM. The distance from the center to the end of the pattern is 1.1 NM. The pattern is labeled '4 NM Holding Pattern' and 'JAPUX'.

Diagram of a 4 NM Holding Pattern. The pattern is a series of turns around a point. The first turn is 176° to the left, and the second is 356° to the right. The distance between turns is 3500 feet. The pattern is centered on a 3500-foot segment. The distance from the center to the start of the pattern is 7.2 NM. The distance from the center to the end of the pattern is 2.9 NM. The distance from the center to the start of the pattern is 0.7 NM. The distance from the center to the end of the pattern is 1.1 NM. The pattern is labeled '4 NM Holding Pattern' and 'JAPUX'.

Diagram of a 4 NM Holding Pattern. The pattern is a series of turns around a point. The first turn is 176° to the left, and the second is 356° to the right. The distance between turns is 3500 feet. The pattern is centered on a 3500-foot segment. The distance from the center to the start of the pattern is 7.2 NM. The distance from the center to the end of the pattern is 2.9 NM. The distance from the center to the start of the pattern is 0.7 NM. The distance from the center to the end of the pattern is 1.1 NM. The pattern is labeled '4 NM Holding Pattern' and 'JAPUX'.

Diagram of a 4 NM Holding Pattern. The pattern is a series of turns around a point. The first turn is 176° to the left, and the second is 356° to the right. The distance between turns is 3500 feet. The pattern is centered on a 3500-foot segment. The distance from the center to the start of the pattern is 7.2 NM. The distance from the center to the end of the pattern is 2.9 NM. The distance from the center to the start of the pattern is 0.7 NM. The distance from the center to the end of the pattern is 1.1 NM. The pattern is labeled '4 NM Holding Pattern' and 'JAPUX'.

Diagram of a 4 NM Holding Pattern. The pattern is a series of turns around a point. The first turn is 176° to the left, and the second is 356° to the right. The distance between turns is 3500 feet. The pattern is centered on a 3500-foot segment. The distance from the center to the start of the pattern is 7.2 NM. The distance from the center to the end of the pattern is 2.9 NM. The distance from the center to the start of the pattern is 0.7 NM. The distance from the center to the end of the pattern is 1.1 NM. The pattern is labeled '4 NM Holding Pattern' and 'JAPUX'.

Diagram of a 4 NM Holding Pattern. The pattern is a series of turns around a point. The first turn is 176° to the left, and the second is 356° to the right. The distance between turns is 3500 feet. The pattern is centered on a 3500-foot segment. The distance from the center to the start of the pattern is 7.2 NM. The distance from the center to the end of the pattern is 2.9 NM. The distance from the center to the start of the pattern is 0.7 NM. The distance from the center to the end of the pattern is 1.1 NM. The pattern is labeled '4 NM Holding Pattern' and 'JAPUX'.

Diagram of a 4 NM Holding Pattern. The pattern is a series of turns around a point. The first turn is 176° to the left, and the second is 356° to the right. The distance between turns is 3500 feet. The pattern is centered on a 3500-foot segment. The distance from the center to the start of the pattern is 7.2 NM. The distance from the center to the end of the pattern is 2.9 NM. The distance from the center to the start of the pattern is 0.7 NM. The distance from the center to the end of the pattern is 1.1 NM. The pattern is labeled '4 NM Holding Pattern' and 'JAPUX'.

Diagram of a 4 NM Holding Pattern. The pattern is a series of turns around a point. The first turn is 176° to the left, and the second is 356° to the right. The distance between turns is 3500 feet. The pattern is centered on a 3500-foot segment. The distance from the center to the start of the pattern is 7.2 NM. The distance from the center to the end of the pattern is 2.9 NM. The distance from the center to the start of the pattern is 0.7 NM. The distance from the center to the end of the pattern is 1.1 NM. The pattern is labeled '4 NM Holding Pattern' and 'JAPUX'.

Diagram of a 4 NM Holding Pattern. The pattern is a series of turns around a point. The first turn is 176° to the left, and the second is 356° to the right. The distance between turns is 3500 feet. The pattern is centered on a 3500-foot segment. The distance from the center to the start of the pattern is 7.2 NM. The distance from the center to the end of the pattern is 2.9 NM. The distance from the center to the start of the pattern is 0.7 NM. The distance from the center to the end of the pattern is 1.1 NM. The pattern is labeled '4 NM Holding Pattern' and 'JAPUX'.

Diagram of a 4 NM Holding Pattern. The pattern is a series of turns around a point. The first turn is 176° to the left, and the second is 356° to the right. The distance between turns is 3500 feet. The pattern is centered on a 3500-foot segment. The distance from the center to the start of the pattern is 7.2 NM. The distance from the center to the end of the pattern is 2.9 NM. The distance from the center to the start of the pattern is 0.7 NM. The distance from the center to the end of the pattern is 1.1 NM. The pattern is labeled '4 NM Holding Pattern' and 'JAPUX'.

Diagram of a 4 NM Holding Pattern. The pattern is a series of turns around a point. The first turn is 176° to the left, and the second is 356° to the right. The distance between turns is 3500 feet. The pattern is centered on a 3500-foot segment. The distance from the center to the start of the pattern is 7.2 NM. The distance from the center to the end of the pattern is 2.9 NM. The distance from the center to the start of the pattern is 0.7 NM. The distance from the center to the end of the pattern is 1.1 NM. The pattern is labeled '4 NM Holding Pattern' and 'JAPUX'.

Diagram of a 4 NM Holding Pattern. The pattern is a series of turns around a point. The first turn is 176° to the left, and the second is 356° to the right. The distance between turns is 3500 feet. The pattern is centered on a 3500-foot segment. The distance from the center to the start of the pattern is 7.2 NM. The distance from the center to the end of the pattern is 2.9 NM. The distance from the center to the start of the pattern is 0.7 NM. The distance from the center to the end of the pattern is 1.1 NM. The pattern is labeled '4 NM Holding Pattern' and 'JAPUX'.

Diagram of a 4 NM Holding Pattern. The pattern is a series of turns around a point. The first turn is 176° to the left, and the second is 356° to the right. The distance between turns is 3500 feet. The pattern is centered on a 3500-foot segment. The distance from the center to the start of the pattern is 7.2 NM. The distance from the center to the end of the pattern is 2.9 NM. The distance from the center to the start of the pattern is 0.7 NM. The distance from the center to the end of the pattern is 1.1 NM. The pattern is labeled '4 NM Holding Pattern' and 'JAPUX'.

Diagram of a 4 NM Holding Pattern. The pattern is a series of turns around a point. The first turn is 176° to the left, and the second is 356° to the right. The distance between turns is 3500 feet. The pattern is centered on a 3500-foot segment. The distance from the center to the start of the pattern is 7.2 NM. The distance from the center to the end of the pattern is 2.9 NM. The distance from the center to the start of the pattern is 0.7 NM. The distance from the center to the end of the pattern is 1.1 NM. The pattern is labeled '4 NM Holding Pattern' and 'JAPUX'.

Diagram of a 4 NM Holding Pattern. The pattern is a series of turns around a point. The first turn is 176° to the left, and the second is 356° to the right. The distance between turns is 3500 feet. The pattern is centered on a 3500-foot segment. The distance from the center to the start of the pattern is 7.2 NM. The distance from the center to the end of the pattern is 2.9 NM. The distance from the center to the start of the pattern is 0.7 NM. The distance from the center to the end of the pattern is 1.1 NM. The pattern is labeled '4 NM Holding Pattern' and 'JAPUX'.

Diagram of a 4 NM Holding Pattern. The pattern is a series of turns around a point. The first turn is 176° to the left, and the second is 356° to the right. The distance between turns is 3500 feet. The pattern is centered on a 3500-foot segment. The distance from the center to the start of the pattern is 7.2 NM. The distance from the center to the end of the pattern is 2.9 NM. The distance from the center to the start of the pattern is 0.7 NM. The distance from the center to the end of the pattern is 1.1 NM. The pattern is labeled '4 NM Holding Pattern' and 'JAPUX'.