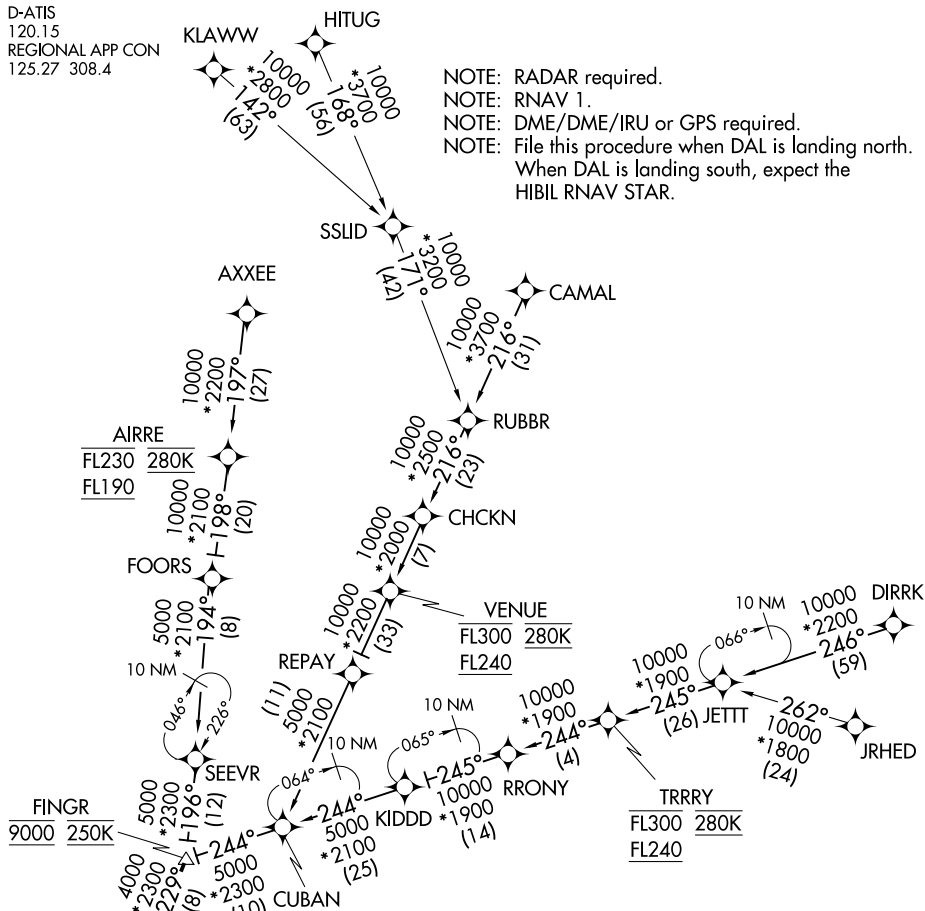


CRIKT ONE ARRIVAL (RNAV)

D-ATIS
120.15
REGIONAL APP CON
125.27 308.4

NOTE: RADAR required.
NOTE: RNAV 1.
NOTE: DME/DME/IRU or GPS required.
NOTE: File this procedure when DAL is landing north.
When DAL is landing south, expect the
HIBIL RNAV STAR.



NOTE: JRHED, RUBBR, and JETT TRANSITIONS: ATC assigned only.
NOTE: AXXE and RRONY TRANSITIONS: For aircraft filing FL230 and below.
NOTE: AIRRE TRANSITION: For traffic below FL190 only.
NOTE: Aircraft departing the Oklahoma City terminal area file and expect the AIRRE enroute transition.

ARRIVAL ROUTE DESCRIPTION

AIRRE TRANSITION (AIRRE.CRIKT1)
 AXXEE TRANSITION (AXXEE.CRIKT1)
 CAMAL TRANSITION (CAMAL.CRIKT1)
 DIRRK TRANSITION (DIRRK.CRIKT1)
 HITUG TRANSITION (HITUG.CRIKT1)

JETT TRANSITION (JETT.CRIKT1)
JRHED TRANSITION (JRHED.CRIKT1)
KLAWW TRANSITION (KLAWW.CRIKT1)
RRONY TRANSITION (RRONY.CRIKT1)
RUBBR TRANSITION (RUBBR.CRIKT1)

From FINGR on track 229° to SLANT, then on track 193° to CRIKT, then on track 193°. Expect RADAR vectors to final approach course.

NOTE: Chart not to scale.

CRIKT ONE ARRIVAL (RNAV)

(FINGR.CRIKT1) 31MAR16

DALLAS, TEXAS

DALLAS LOVE FIELD (DAL)

SC-2, 03 DEC 2020 to 31 DEC 2020