

DRYYE TWO ARRIVAL (RNAV)

SC-2, 03 DEC 2020 to 31 DEC 2020

## ARRIVAL ROUTE DESCRIPTION

BGTOE TRANSITION (BGTOE.DRYE2)

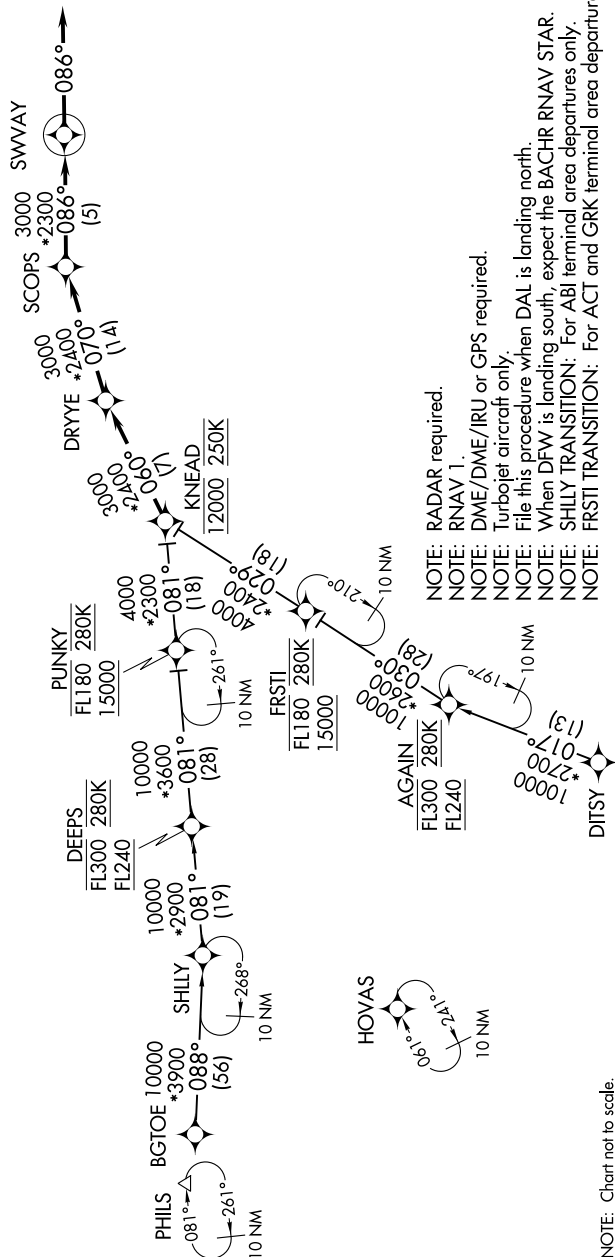
DITSY TRANSITION (DITSY.DRYE2)

FRSTI TRANSITION (FRSTI.DRYE2)

# SHILLY TRANSITION (SHILLY.DRYYE2)

From KNEAD on track 060° to DRYE, then on track 070° to SCOPS, then on track 086° to SWVAY, then on track 086°. Expect RADAR vectors to final approach course.

REGIONAL APP CON  
135.975 379.9  
D-ATIS  
120.15



NOTE: RADAR required.

NOTE: RNAV 1.

NOTE: DME/DME/IRU or GPS required.

NOTE: Turbojet aircraft only.

**NOTE:** File this procedure when DAL is landing north.

NOTE: When  $\overline{DFW}$  is landing south, expect the BACHR RNAV STAR.

**NOTE: SHILLY TRANSITION:** For ABL terminal area departures only.

NOTE: FRSTI TRANSITION: For ACT and GRK terminal area departures only.

NOTE: Chart not to scale.

SC-2, 03 DEC 2020 to 31 DEC 2020

## DRYYE TWO ARRIVAL (RNAV)

(KNEAD.DRYYE2) 22JUN17

DALLAS, TEXAS  
DALLAS LOVE FIELD (DAL)