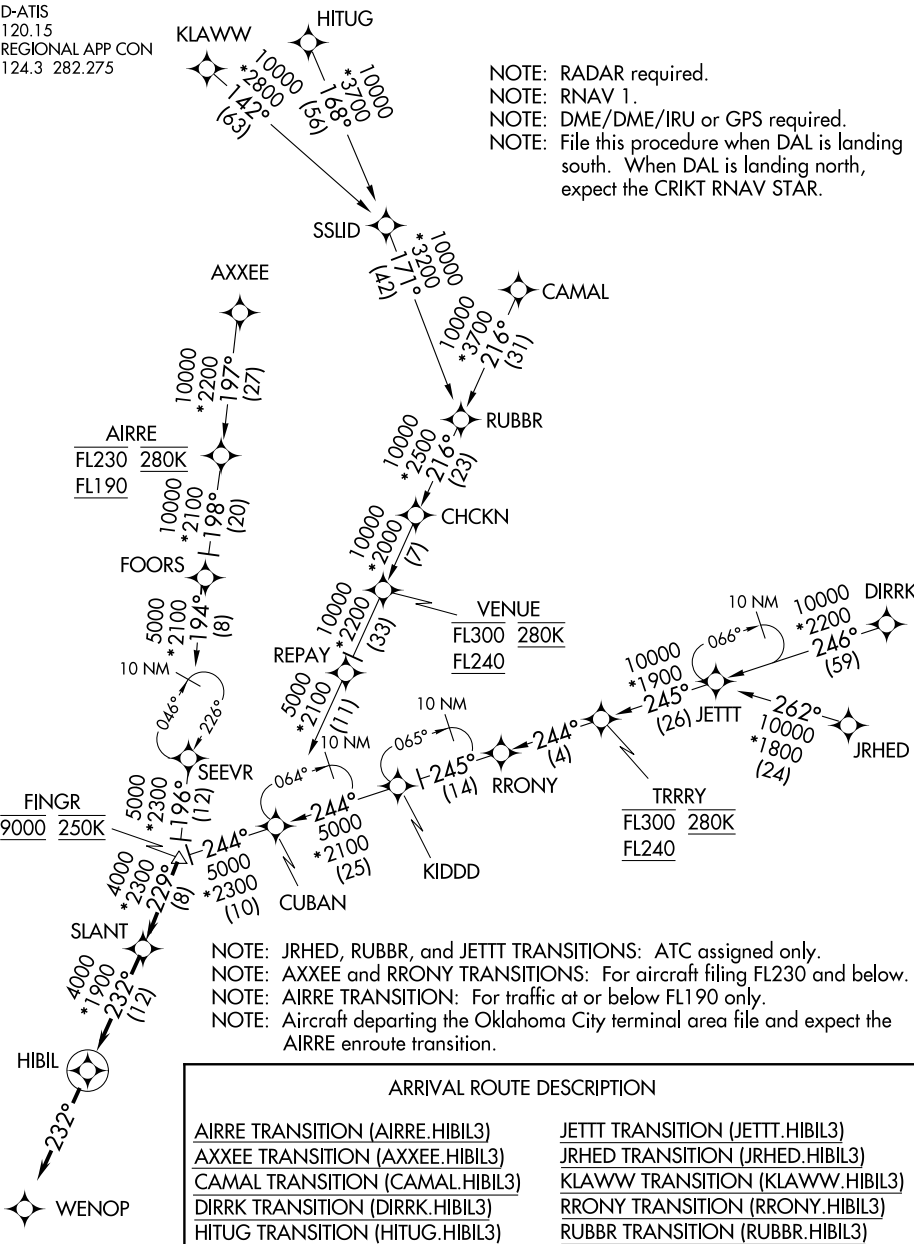


D-ATIS
120.15
REGIONAL APP CON
124.3 282.275

NOTE: RADAR required.
NOTE: RNAV 1.
NOTE: DME/DME/IRU or GPS required.
NOTE: File this procedure when DAL is landing south. When DAL is landing north, expect the CRIKT RNAV STAR.



NOTE: Chart not to scale.