

LOC/DME I-OVW	APP CRS	Rwy Idg	6952
111.5	313°	TDZE	487
Chan 52		Apt Elev	487

ILS RWY 31R (SA CAT I & II)

DALLAS LOVE FIELD (DAL)

DME or RADAR required for LOC only. RADAR required for procedure entry.

Simultaneous approach authorized.

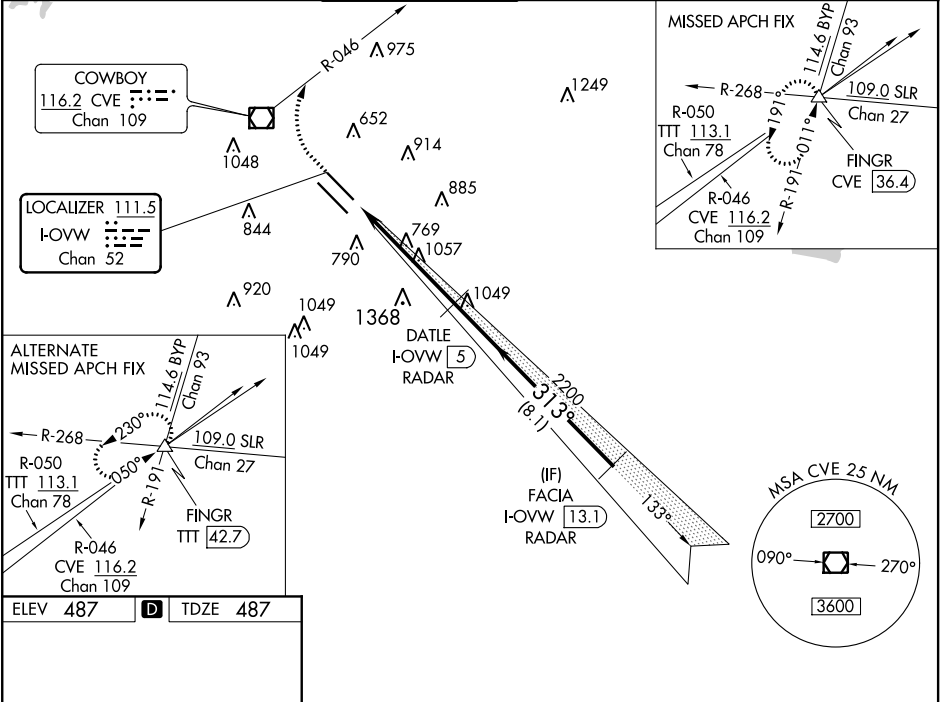
SA CAT I: Requires specific OPSPEC, MSPEC or LOA approval and use of HUD to DH.

SA CAT II: Reduced Lighting: Requires specific OPSPEC, MSPEC or LOA approval and use of autoland or HUD to touchdown.

MALSR

MISSED APPROACH: Climb to 1000 then climbing right turn to 5000 on heading 330° and CVE VOR/DME R-046 to FINGR INT/CVE 36.4 DME and hold.

D-ATIS	REGIONAL APP CON	LOVE TOWER	GND CON	CLNC DEL	CPDLC
120.15	NORTH 124.3 282.275 SOUTH 125.2 343.65	123.7 239.3	121.75 348.6	127.9	



1000

5000

CVE R-046

FINGR

↑

hdg 330°

△

DATEL I-OVW 5, RADAR

FACIA I-OVW 13.1, RADAR

2200

2200

313°

2500

1072

5.2 NM

8.1 NM

GS 3.00° TCH 55

CATEGORY	A	B	C	D
S-ILS 31R	SA CAT I	RA 151/14	150 DA 637	
S-ILS 31R	SA CAT II	RA 98/12	100 DA 587	

SA CATEGORY I & II ILS - SPECIAL AIRCREW & AIRCRAFT CERTIFICATION REQUIRED