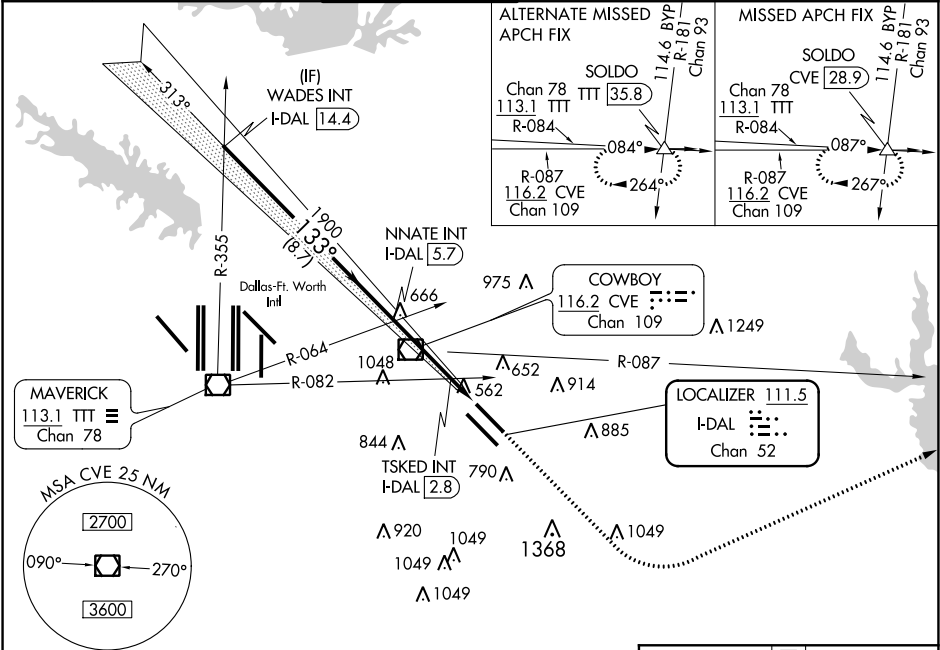


LOC/DME I-DAL	APP CRS	Rwy Idg	7352
111.5	133°	TDZE	485
Chan 52		Apt Elev	487

ILS Y or LOC Y RWY 13L
DALLAS LOVE FIELD (DAL)

RADAR required for procedure entry.		MALSR 	MISSED APPROACH: Climb to 1000 then climbing left turn to 3000 on heading 060° and CVE VOR/DME R-087 to SOLDO INT/CVE 28.9 DME and hold.
	Simultaneous approach authorized.		

D-ATIS 120.15	REGIONAL APP CON NORTH 124.3 282.275 SOUTH 125.2 343.65	LOVE TOWER 123.7 239.3	GND CON 121.75 348.6	CLNC DEL 127.9	CPDLC
------------------	---	---------------------------	-------------------------	-------------------	-------



ELEV 487		D		TDZE 485	
<div>WADES INT I-DAL 14.4</div>		<div>NNATE INT I-DAL 5.7</div>		<div>1000 3000 hdg 060°</div>	
<div>2500</div>		<div>TSKED INT I-DAL 2.8</div>		<div>CVE R-087</div>	
<div>GS 3.00° TCH 55</div>		<div>I-DAL 2.3</div>		<div>SOLDO △</div>	
<div>133°</div>		<div>I-DAL 1.4</div>		<div>*LOC only.</div>	
<div>1900</div>		<div>*920</div>		<div></div>	
<div>8.7 NM</div>		<div>2.9 NM</div>		<div>0.5</div>	
<div>0.9</div>		<div></div>		<div></div>	
CATEGORY	A		B		C
S-ILS 13L		685/18 200 (200-½)			
S-LOC 13L		920/24 435 (500-½)		920/40 435 (500-¾)	
CIRCLING	1000-1 513 (600-1)		1140-1 653 (700-1)		1220-2 733 (800-2)
TSKED FIX MINIMUMS (DUAL VOR RECEIVERS OR DME REQUIRED)		1520-3 1033 (1100-3)			
S-LOC 13L		820/24 335 (400-½)		820/26 335 (400-¾)	
CIRCLING	1000-1 513 (600-1)		1140-1 653 (700-1)		1520-3 1033 (1100-3)
TDZ/CL Rwy 13L and 31L HIRL Rwy 13L-31R, and 13R-31L					
FAF to MAP 4.3 NM					
Knots 60 90 120 150 180					
Min:Sec 4:18 2:52 2:09 1:43 1:26					

SC-2, 03 DEC 2020 to 31 DEC 2020

SC-2, 03 DEC 2020 to 31 DEC 2020