

20030

ILS Y or LOC Y RWY 13R
DALLAS LOVE FIELD (DAL)

MISSED APPROACH: Climb to 1000 then climbing right turn to 3000 on heading 150° and CVE VOR/DME R-141 to TACKE/CVE 23 DME and hold.

D-ATIS 120.15	REGIONAL APP CON NORTH 124.3 282.275 SOUTH 125.2 343.65	LOVE TOWER 123.7 239.3	GND CON 121.75 348.6	CLNC DEL 127.9	CPDLC
-------------------------	---	----------------------------------	--------------------------------	--------------------------	-------

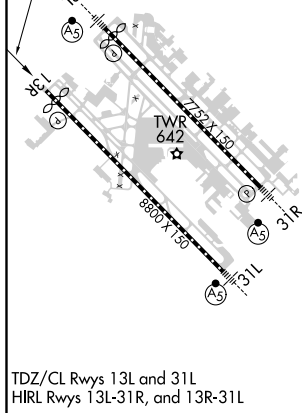
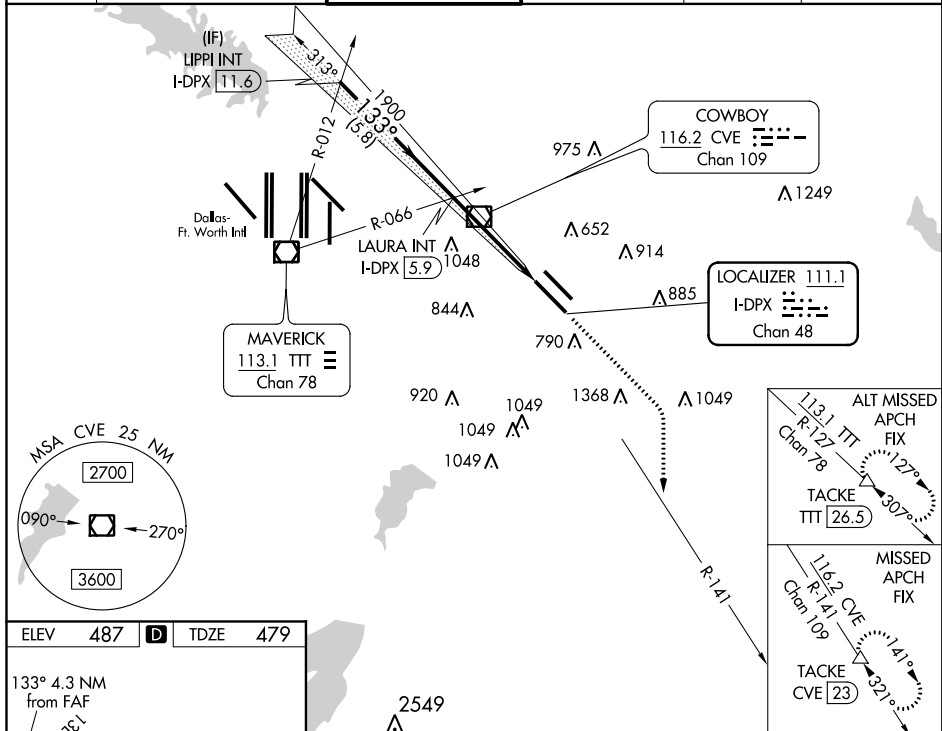


Diagram illustrating a 4-bar RNAV approach for Runway 13R, showing the intersection of the ILS glidepath and the RNAV glidepath.

Key Data:

- ILS:** ILS glidepath not coincident (VGSI angle 3.00°/TCH 52).
- RNAV:** RNAV glidepath (3.00° TCH 47).
- Integers:** LAURA INT I-DPX 5.9, LIPPI INT I-DPX 11.6.
- Turns:** 133° (Initial to Final), 150° (Final to Runway).
- Distances:** 5.8 NM, 2.9 NM, 1.4 NM.
- LOC only:** *LOC only.

CATEGORY	A	B	C	D
S-ILS 13R	679/40 200 (200-¾)			
S-LOC 13R	960/55 481 (500-1)	960-1⅓ 481 (500-1⅓)		
CIRCLING	1080-1 593 (600-1)	1140-1 653 (700-1)	1220-2 733 (800-2)	1520-3 1033 (1100-3)

DALLAS LOVE FIELD (DAL)
ILS Y or LOC Y RWY 13R

SC-2, 03 DEC 2020 to 31 DEC 2020