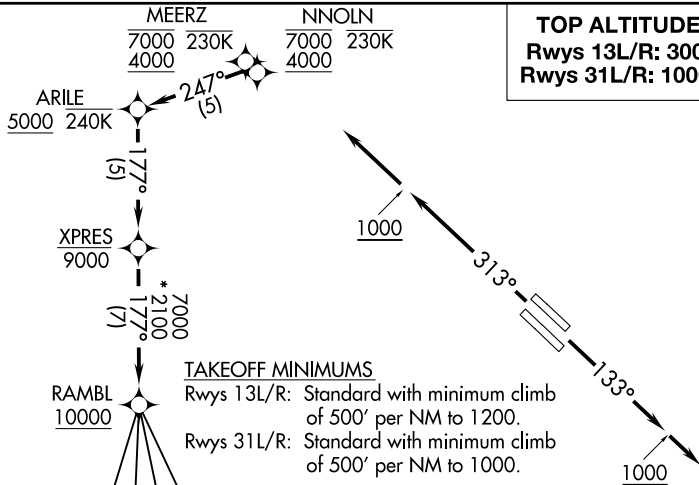


DALLAS LOVE FIELD (DAL)
DALLAS, TEXAS

RAMBL FIVE DEPARTURE (RNAV)

D-ATIS
120.15
CLNC DEL
127.9
CPDLC
GND CON
121.75 348.6
LOVE TOWER
123.7 239.3
REGIONAL DEP CON
126.475 363.15

TOP ALTITUDE:
Rwys 13L/R: 3000
Rwys 31L/R: 10000

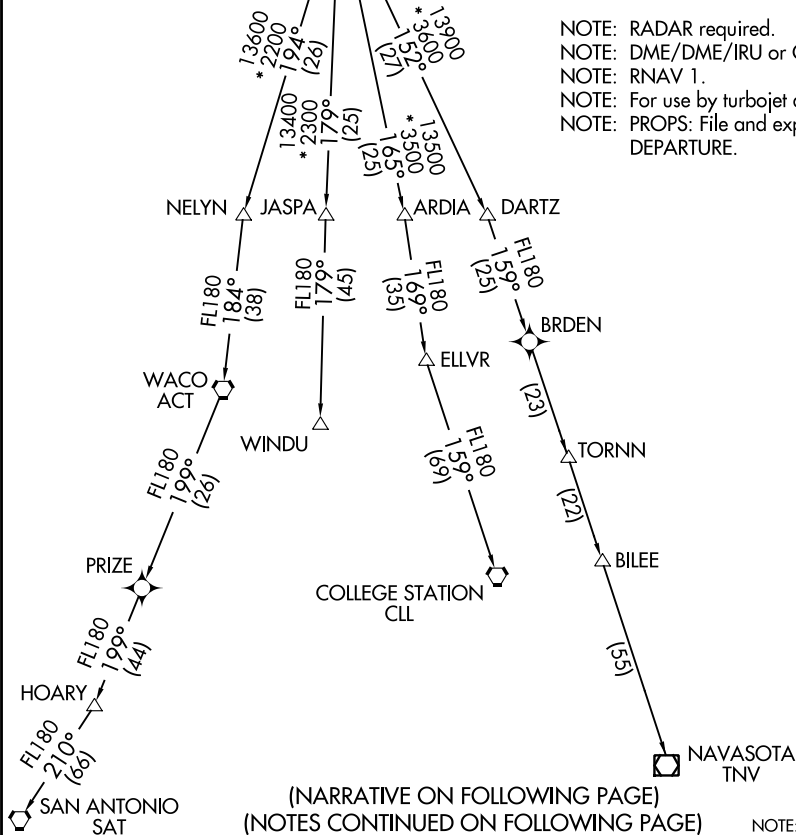


TAKEOFF MINIMUMS

Rwys 13L/R: Standard with minimum climb of 500' per NM to 1200.

Rwys 31L/R: Standard with minimum climb of 500' per NM to 1000.

NOTE: RADAR required.
NOTE: DME/DME/IRU or GPS required.
NOTE: RNAV 1.
NOTE: For use by turbojet aircraft only.
NOTE: PROPS: File and expect JOE POOL
DEPARTURE.



(NARRATIVE ON FOLLOWING PAGE)
(NOTES CONTINUED ON FOLLOWING PAGE)

NOTE: Chart not to scale.

RAMBL FIVE DEPARTURE (RNAV)

(RAMBL5.RAMBL) 10NOV16

DALLAS, TEXAS
DALLAS LOVE FIELD (DAL)