

RNAV (RNP) W RWY 13R
DALLAS LOVE FIELD (DAL)

APP CRS	Rwy Idg	8310
133°	TDZE	478
	Apt Elev	487

T

For uncompensated Baro-VNAV systems, procedure NA below -5°C (23°F) or above 54°C (130°F). Simultaneous approach authorized. RF required. GPS required. Use of FD or AP providing RNAV track guidance required during simultaneous operations.

MISSED APPROACH: Climb to 3000 direct ENAVE and on track 151° to TACKE and hold.

D-ATIS
120.15

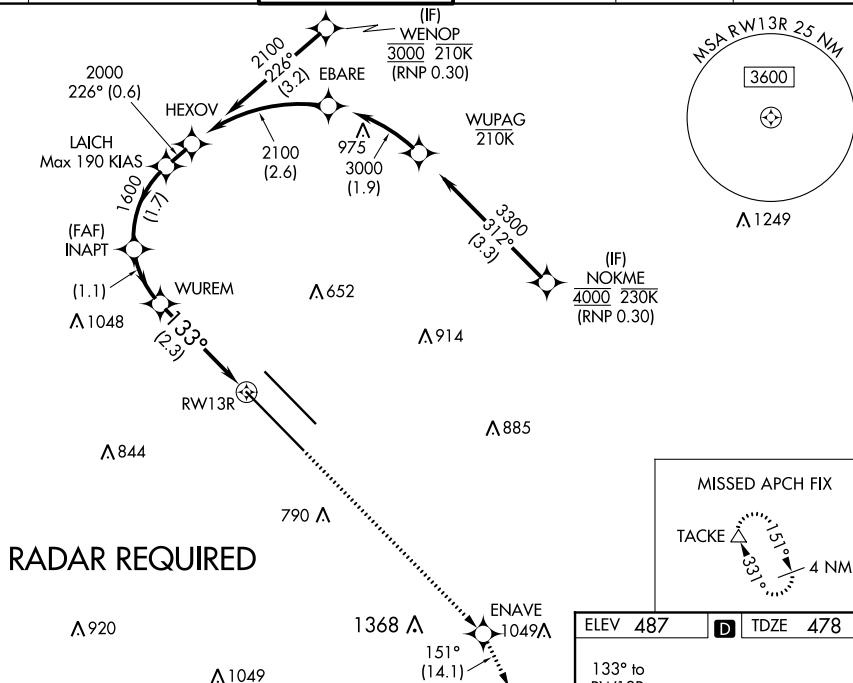
REGIONAL APP CON		
NORTH	124.3	282.275
SOUTH	125.2	343.65

LOVE TOWER
123.7 239.3

GND CON
121.75 348.6

CLNC DEL
127.9

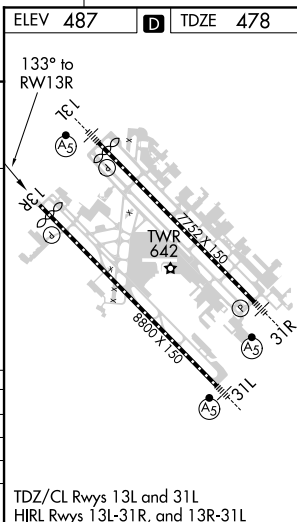
CPDLC



VGSI and RNAV glidepath not coincident (VGSI Angle 3.00/TCH 52).

3000	ENAVE	tr	TACKE
------	-------	----	-------

See planview for multiple IF locations.



CATEGORY	A	B	C	D
RNP 0.20 DA		781/50	303 (300-1)	
RNP 0.25 DA		833/60	355 (400-1¼)	
RNP 0.30 DA		929-1½	451 (500-1½)	

AUTHORIZATION REQUIRED

TDZ/CL Rwy 13L and 31L
HIRL Rwy 13L-31R, and 13R-31L