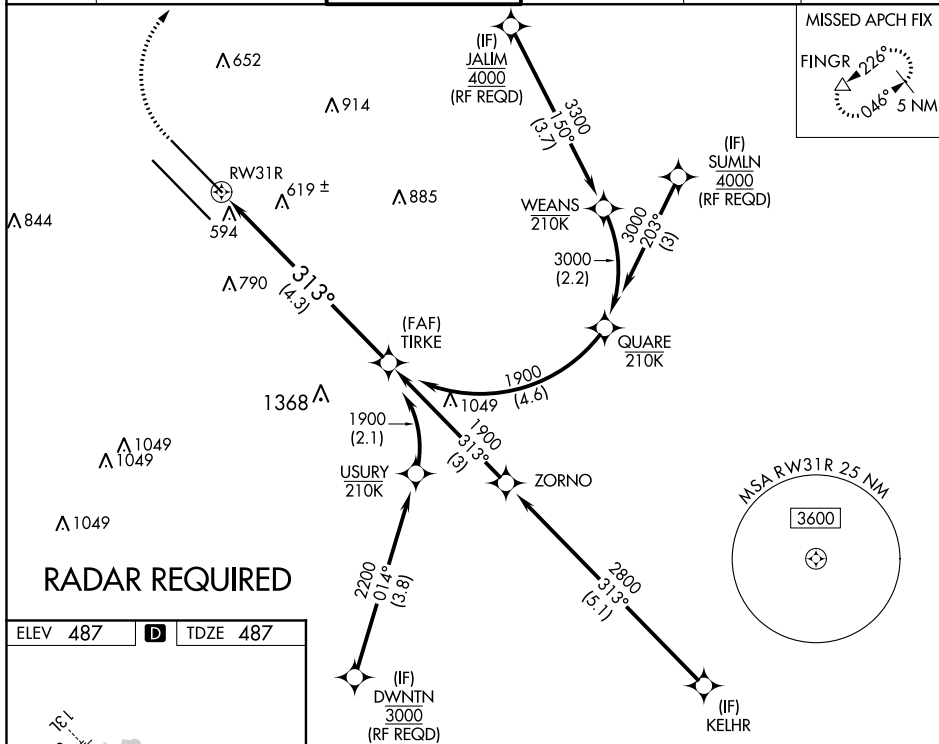


RNAV (RNP) Z RWY 31R
DALLAS LOVE FIELD (DAL)

MISSED APPROACH: Climb to 900 then climbing right turn to 5000 direct **FINGR** and hold.

CPDLC



TDZ/CL Rwy 13L and 31L
HIRL Rwy 13L-31R, and 13R-31L

900 ↑

5000 ↗

VGSi and RNAV glidepath not coincident
(VGSi Angle 3.00/TCH 55)

TIRKE 1900

See planview for multiple IF locations.

RW31R

313°

4.3 NM

GP 3.00°
TCH 49

CATEGORY	A	B	C	D
RNP 0.16 DA		796/24	309 (400-½)	
RNP 0.30 DA		895/45	408 (500-¾)	

AUTHORIZATION REQUIRED

DALLAS LOVE FIELD (DAL)
RNAV (RNP) Z RWY 31R

SC-2, 03 DEC 2020 to 31 DEC 2020