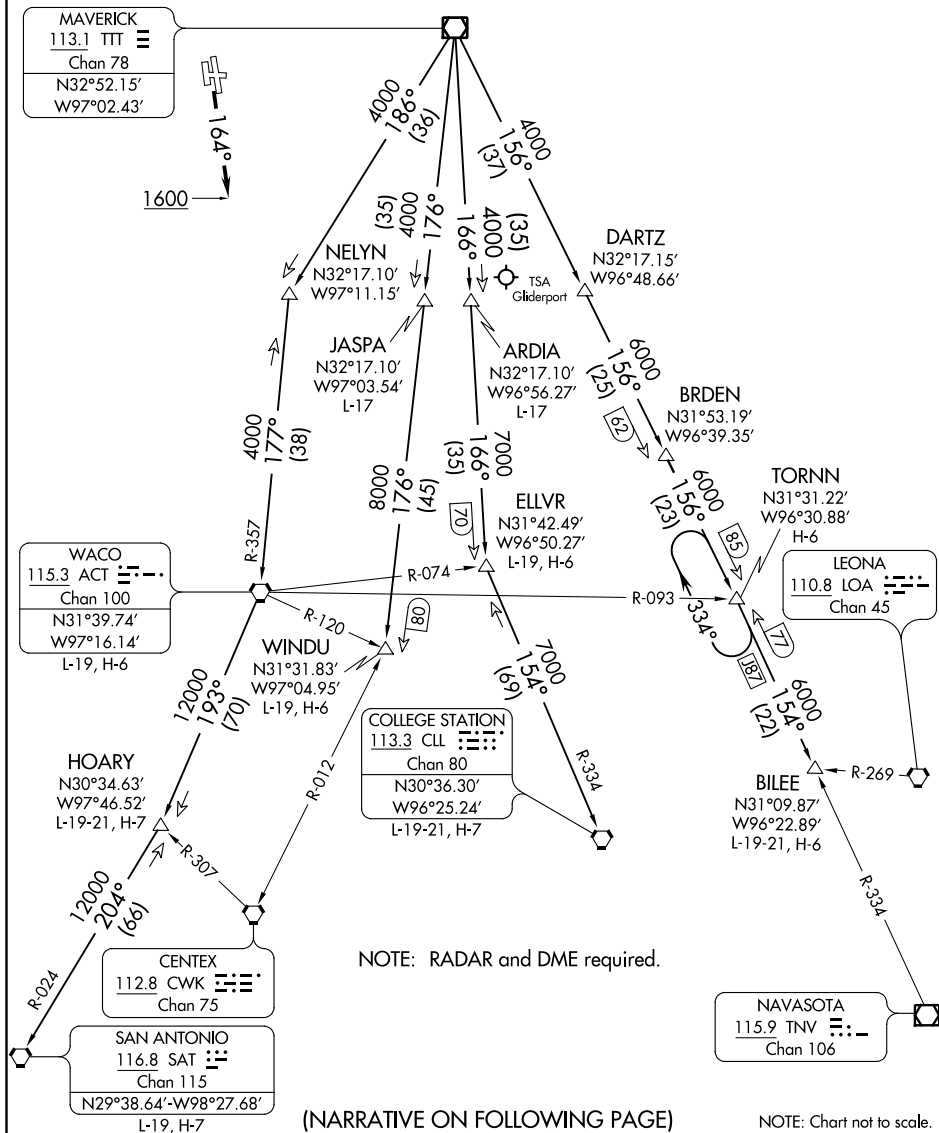


JOE POOL ONE DEPARTURE

TAKEOFF MINIMUMS
Rwys 16, 17: Standard.
Rwy 34: 300-2 or standard with minimum climb of 220' per NM to 1100, or alternatively, with standard takeoff minimums and a normal 200' per NM climb gradient, takeoff must occur no later than 1800' prior to DER.
Rwy 35: 300-1½ or standard with minimum climb of 205' per NM to 900, or alternatively, with standard takeoff minimums and a normal 200' per NM climb gradient, takeoff must occur no later than 1200' prior to DER.



JOE POOL ONE DEPARTURE

FORT WORTH, TEXAS
FORT WORTH MEACHAM INTL (FTW)