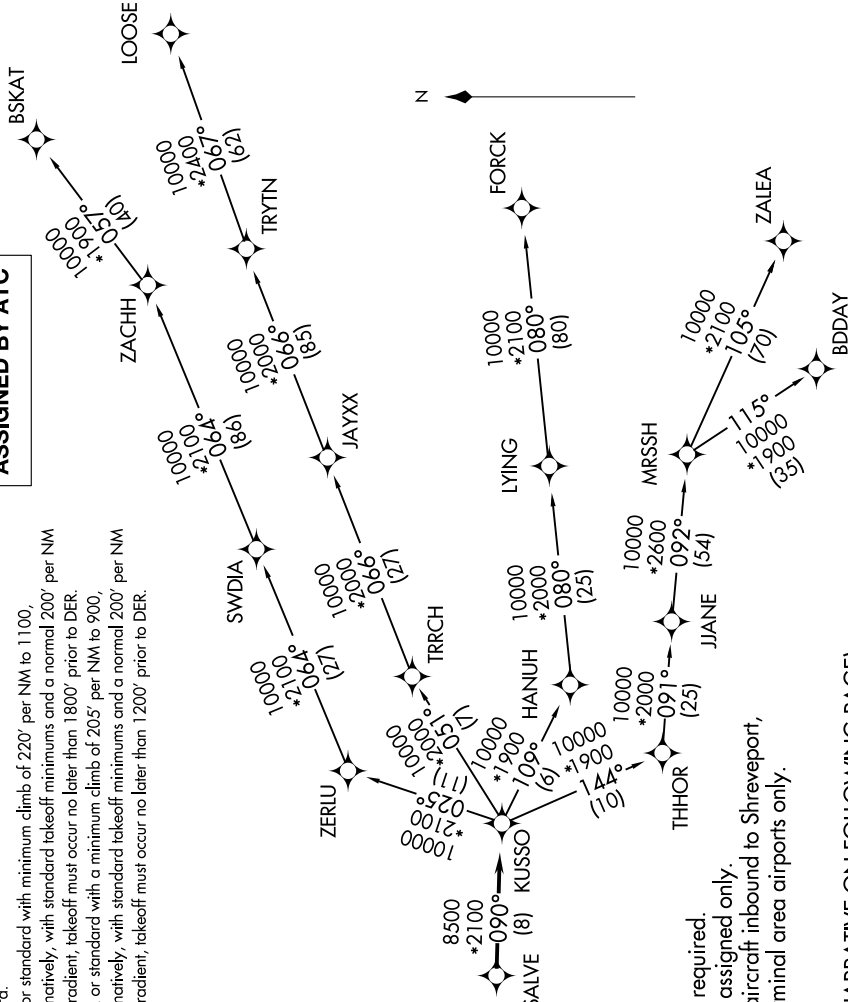


SC-2, 03 DEC 2020 to 31 DEC 2020

ATIS
120.7
CLNC DEL
124.65
GND CON
121.9
MEACHAM TOWER
118.3 257.8
REGIONAL DEP CON
118.1 306.95 (NORTH)
135.975 379.9 (SOUTH)

TAKEOFF MINIMUMS
Rwys 16, 17: Standard.
Rwy 34:
or alternatively, with standard climb of 220' per NM to 1100,
climb gradient, takeoff must occur no later than 1800' prior to DER.
Rwy 35:
300-1¼ or standard with a minimum climb of 205' per NM to 900,
or alternatively, with standard takeoff minimums and a normal 200' per NM
climb gradient, takeoff must occur no later than 1200' prior to DER.

TOP ALTITUDE:
ASSIGNED BY ATC



NOTE: RADAR required.
NOTE: RNAV 1.
NOTE: DME/DME/IRU or GPS required.
NOTE: BDDAY transition: ATC assigned only.
NOTE: MRSSH transition: For aircraft inbound to Shreveport, Jackson and Monroe terminal area airports only.

(NARRATIVE ON FOLLOWING PAGE)

NOTE: Chart not to scale.

SC-2, 03 DEC 2020 to 31 DEC 2020