

HI-ILS or LOC/DME RWY 18

LOC I-NFW 108.7	APCH CRS 177°	Rwy Ldg TDZE Arpt Elev 11,999 636 650	JAL-160 [USN]	FORT WORTH NAS JRB (CARSWELL FLD) (KNFW)
---------------------------	-------------------------	---------------------------------------------------------------------------	---------------	------------------------------------------

*Circling not authorized E of Rwy 18-36.	MISSED APPROACH: Climb to 3000 heading 177° and FUZ VORTAC R-218 to MOLKE and hold.
------------------------------------------	-------------------------------------------------------------------------------------

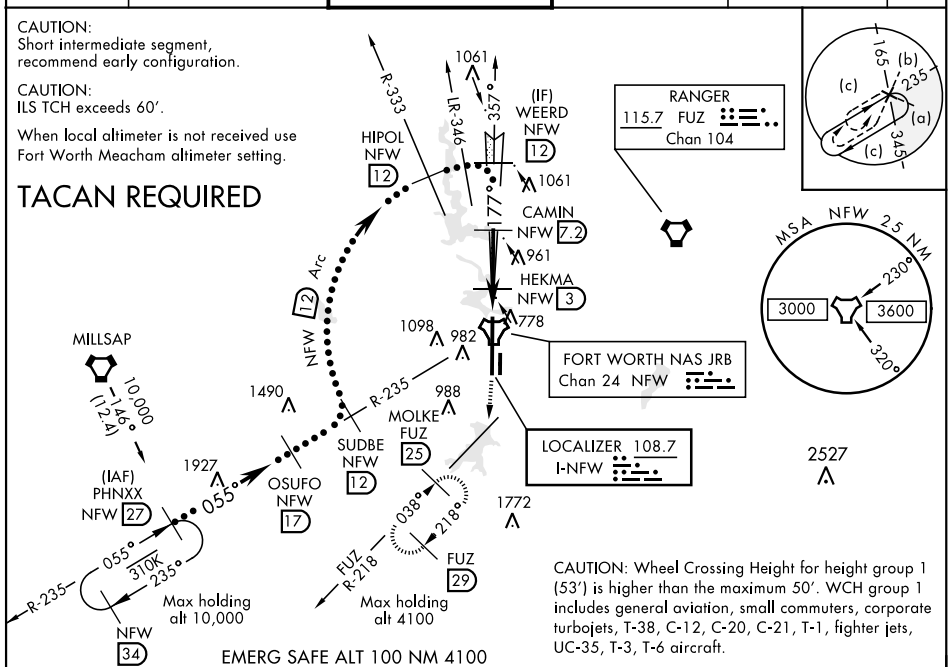
ATIS★ 351.675	REGIONAL APP CON 125.8 257.95	NAVY FORT WORTH TOWER★ 120.950 269.325	GND CON 121.675 279.575	CLNC DEL 126.4 254.325	ASR/ PAR
-------------------------	-----------------------------------------	--------------------------------------------------	-----------------------------------	----------------------------------	-------------

CAUTION:
Short intermediate segment,
recommend early configuration.

CAUTION:
ILS TCH exceeds 60'.

When local altimeter is not received use
Fort Worth Meacham altimeter setting.

TACAN REQUIRED



3000 hdg 177°	FUZ R-218	MOLKE FUZ 25	†VDP NA when using FTW altimeter setting	ELEV 650	TDZE 636
TACAN	COGOR NFW 1.4	HEKMA NFW 3	2671	177° 6.4 NM from FAF	81
6 NM	1.6 NM	4.2 NM	1360	793	792
CATEGORY	C	D	E	753	759
S-ILS 18	836- $\frac{3}{4}$	200	(200- $\frac{3}{4}$)	11,999 x 200	ASSAULT STRIP
S-LOC 18	1040-1 $\frac{1}{8}$	404	(400-1 $\frac{1}{8}$)	357°	REIL Rwy 18
CIRCLING*	1320-1 $\frac{3}{4}$	1320-2	1440-2 $\frac{3}{4}$	3998 x 50	HIRL Rwy 18-36
	670 (700-1 $\frac{3}{4}$)	670 (700-2)	790 (800-2 $\frac{3}{4}$)	11,999 x 200	
	FORT WORTH MEACHAM ALTIMETER				
S-ILS 18	856- $\frac{3}{4}$	220	(300- $\frac{3}{4}$)	36	FAF to MAP 5.8 NM
S-LOC 18	1060-1 $\frac{1}{4}$	424	(500-1 $\frac{1}{4}$)	Knots	120 140 160 180 200
CIRCLING*	1340-2	1340-2 $\frac{1}{4}$	1460-2 $\frac{3}{4}$	Min:Sec	2:54 2:29 2:10 1:56 1:44
	690 (700-2)	690 (700-2 $\frac{1}{4}$)	810 (900-2 $\frac{3}{4}$)		

HI-ILS or LOC/DME RWY 18