

HI-ILS or LOC/DME RWY 36

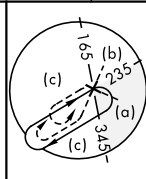
LOC I-FWH 109.3	APCH CRS 357°	Rwy Idg 11,999 TDZE 650 Arpt Elev 650	JAL-160 [USN]	FORT WORTH NAS JRB (CARSWELL FLD) (KNFW)
---------------------------	-------------------------	--	---------------	--

<p>* When ALS inop, increase vis to $\frac{3}{4}$ mile.</p> <p>** When ALS inop, increase vis to $1\frac{1}{2}$ miles.</p> <p>Circling not authorized E of Rwy 18-36.</p>	<p>ALSF-1</p>	<p>MISSED APPROACH: Climb to 2000, then climbing left turn to 3000 to intercept NFW TACAN R-333 to HIPOI and hold.</p>
---	---------------	--

ATIS★ 351.675	REGIONAL APP CON 125.8 257.95	NAVY FORT WORTH TOWER★ 120.950 269.325	GND CON 121.675 279.575	CLNC DEL 126.4 254.325	ASR/ PAR
-------------------------	---	--	-----------------------------------	----------------------------------	-------------

When local altimeter is not received
use Fort Worth Meacham
altimeter setting.

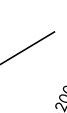
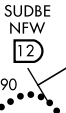
**TACAN
REQUIRED**



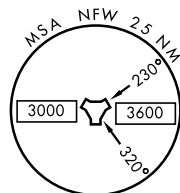
LOCALIZER 109.3
I-FWH

FORT WORTH NAS JRB
Chan 24 NFW

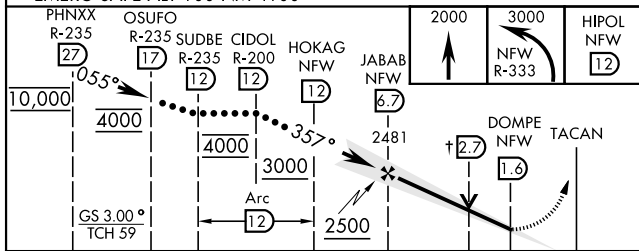
MILLSAP



CAUTION: Short intermediate,
recommend early configuration.

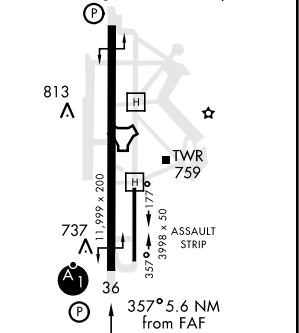


EMERG SAFE ALT 100 NM 4100



ELEV 650 TDZE 650

REIL Rwy 18-36
HIRL Rwy 18-36



CATEGORY	C	D	E
S-ILS 36*	850- $\frac{1}{2}$	200	(200- $\frac{1}{2}$)
S-LOC 36**	1200- $1\frac{1}{8}$	550	(600- $1\frac{1}{8}$)
CIRCLING***	1320- $1\frac{3}{4}$ 670 (700- $1\frac{3}{4}$)	1320-2 670 (700-2)	1440- $2\frac{3}{4}$ 790 (800- $2\frac{3}{4}$)
FORT WORTH MEACHAM ALTIMETER			
S-ILS 36*	870- $\frac{1}{2}$	220	(300- $\frac{1}{2}$)
S-LOC 36**	1220- $1\frac{1}{4}$	570	(600- $1\frac{1}{4}$)
CIRCLING***	1340-2 690 (700-2)	1340- $2\frac{1}{4}$ 690 (700- $2\frac{1}{4}$)	1460- $2\frac{3}{4}$ 810 (900- $2\frac{3}{4}$)

HI-ILS or LOC/DME RWY 36