

## HI-TACAN RWY 18

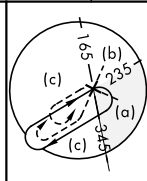
TACAN NFW Chan <b>24</b>	APCH CRS <b>172°</b>	Rwy Idg <b>11,999</b> TDZE <b>636</b> Arpt Elev <b>650</b>	JAL-160 [USN]	FORT WORTH NAS JRB (CARSWELL FLD) (KNFW)
-----------------------------	-------------------------	--	---------------	--

<p>▼ *Circling not authorized E of Rwy 18-36.</p>	<p>MISSED APPROACH: Climb to 3000 heading 172° and FUZ VORTAC R-218 to MOLKE and hold.</p>
---	--

ATIS★ <b>351.675</b>	REGIONAL APP CON <b>125.8 257.95</b>	NAVY FORT WORTH TOWER★ <b>120.950 269.325</b>	GND CON <b>121.675 279.575</b>	CLNC DEL <b>126.4 254.325</b>	ASR/ PAR
-------------------------	---	--	-----------------------------------	----------------------------------	-------------

When local altimeter is not received use  
Fort Worth Meacham altimeter setting.

CAUTION: Short intermediate,  
recommend early configuration.

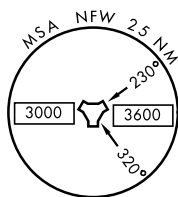
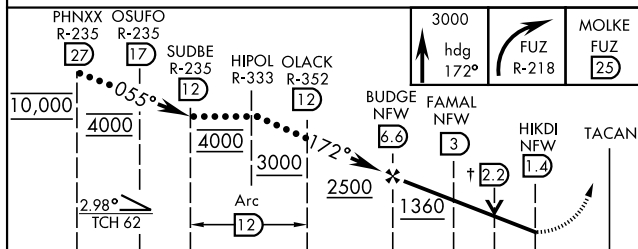


RANGER  
115.7 FUZ  
Chan 104

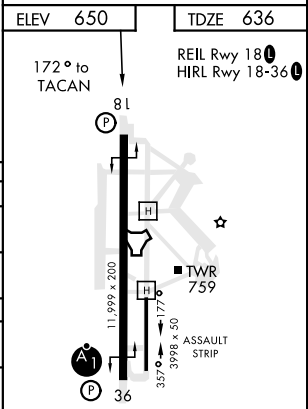
FORT WORTH NAS JRB  
Chan 24 NFW

EMERG SAFE ALT 100 NM 4100

† VDP NA when using  
FTW altimeter setting



CATEGORY	C	D	E
S-18	1120-1 $\frac{3}{4}$	484 (500-1 $\frac{3}{4}$ )	
CIRCLING*	1320-1 $\frac{3}{4}$ 670 (700-1 $\frac{3}{4}$ )	1320-2 670 (700-2)	1440-2 $\frac{3}{4}$ 790 (800-2 $\frac{3}{4}$ )
FORT WORTH MEACHAM ALTIMETER			
S-18	1140-1 $\frac{3}{4}$	504 (500-1 $\frac{3}{4}$ )	
CIRCLING*	1340-2 690 (700-1)	1340-2 $\frac{1}{4}$ 690 (700-2 $\frac{1}{4}$ )	1460-2 $\frac{3}{4}$ 810 (900-2 $\frac{3}{4}$ )



## HI-TACAN RWY 18