

AL-160 [USN]

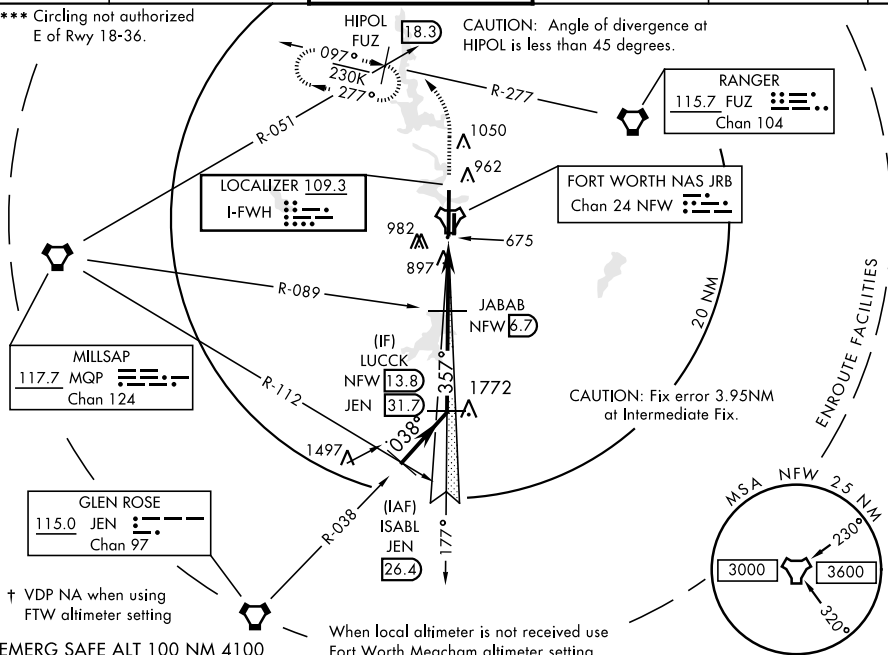
FORT WORTH NAS JRB (CARSWELL FLD) (KNFW)

T * When ALS inop, increase vis to $\frac{3}{4}$ mile.
 ** When ALS inop, increase CAT AB vis to 1 mile,
 CAT CDE vis to $1\frac{5}{8}$ mile.



MISSED APPROACH: Climb to 2000, then climbing left turn to 3000 heading 330° and FUZ VORTAC R-277 to HIPOL and hold.

*** Circling not authorized
E of Rwy 18-36.



EMERG SAFE ALT 100 NM 4100

When local altimeter is not received use Fort Worth Meacham altimeter setting.

[illegible]

CATEGORY	A		B	C		D	E
S-ILS 36 *	850-½			200		(200-½)	
S-LOC 36 **	1200-½	550 (600-½)		1200-1 ⅛		550 (600-1 ⅛)	
*** C CIRCLING	1240-1 590 (600-1)	1280-1 630 (700-1)		1320-1¾ 670 (700-1¾)	1320-2 670 (700-2)	1440-2¾ 790 (800-2¾)	
FORT WORTH MEACHAM ALTIMETER							
S-ILS 36 *	870-½			220		(300-½)	
S-LOC 36 **	1220-½	570 (600-½)		1220-1 ¼		570 (600-1 ¼)	
*** C CIRCLING	1260-1 610 (700-1)	1300-1 650 (700-1)		1340-2 690 (700-2)	1340-2¼ 690 (700-2¼)	1460-2¾ 810 (900-2¾)	