


## HI-VOR/DME or TACAN RWY 26

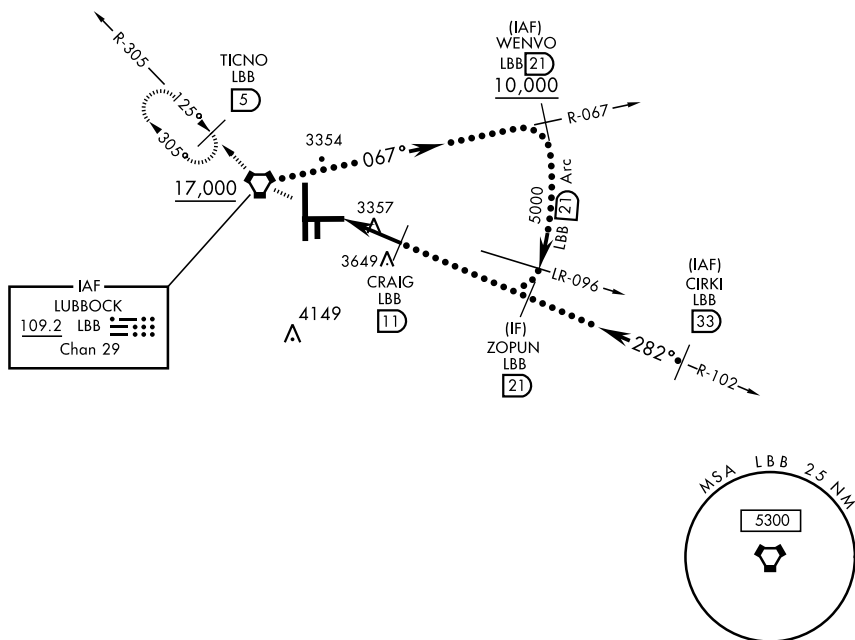
VORTAC LBB <b>109.2</b> Chan <b>29</b>	APCH CRS <b>282°</b>	Rwy Idg THRE Arpt Elev <b>8003</b> <b>3253</b> <b>3282</b>
--	-------------------------	---

JAL-241 [USAF]

LUBBOCK PRESTON SMITH INTL (KLBB)

<b>T</b> * Inoperative Table does not apply.	MALSR 	MISSED APPROACH: Climb and maintain 5100 direct LBB VORTAC and via LBB R-305 to TICNO (LBB 5 DME) and hold.
--	--	--



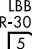
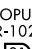
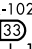
ATIS <b>125.3 270.275</b>	LUBBOCK APP CON <b>119.2 351.8</b>	LUBBOCK TOWER <b>120.5 239.3</b>	GND CON <b>121.9 348.6</b>	CLNC DEL <b>125.8 281.55</b>
------------------------------	---------------------------------------	-------------------------------------	-------------------------------	---------------------------------

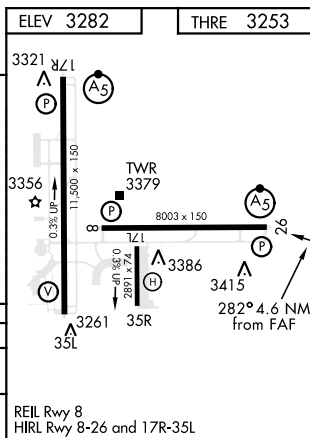


## RADAR REQUIRED

(For entry at CIRKI)

EMERG SAFE ALT 100 NM 7300

5100	LBB	TICNO LBB R-305	ZOPUN R-102	CIRKI R-102
				
		7.6	282°	15,000
		4700		
		5000		
		4.6 NM		
CATEGORY	C	D	E	
S-26 *	3680-1¼	427	(400-1¼)	
CIRCLING	3740-1½ 458 (500-1½)	3840-2 558 (600-2)	3980-2½ 698 (700-2½)	



LUBBOCK, TEXAS

33°40'N-101°49'W

LUBBOCK PRESTON SMITH INTL (KLBB)

Amdt 1 13DEC12

## HI-VOR/DME or TACAN RWY 26