

LOC/DME I-LBB	APP CRS	Rwy Idg	11500
111.7	174°	TDZE	3282
Chan 54		Apt Elev	3282

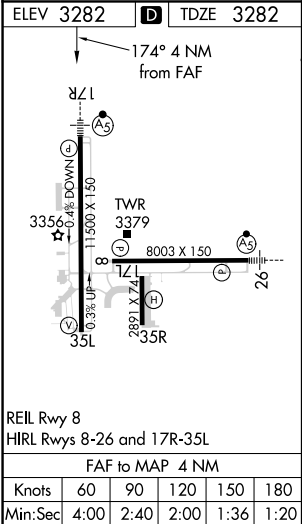
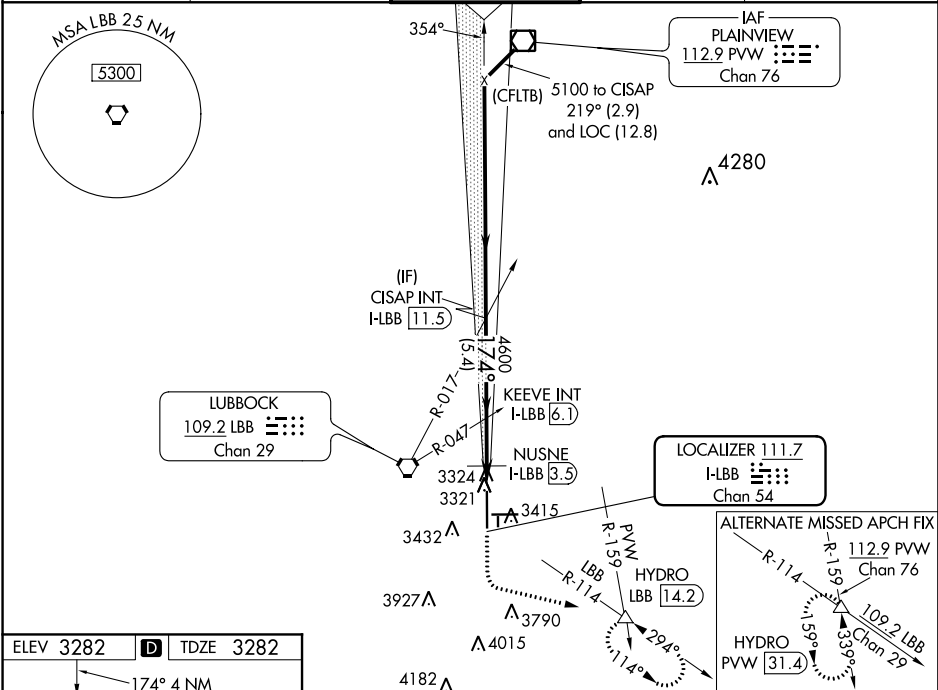
ILS or LOC RWY 17R
LUBBOCK PRESTON SMITH INTL (LBB)

⚠ For inop MALS, increase S-ILS 17R Cat E visibility to RVR 4000, S-LOC 17R Cat C/D/E visibility to 1 1/2 mile, and NUSNE DME Fix Minimums, increase S-LOC 17R Cat C/D/E visibility to RVR 5000.
#RVR 1800 authorized with the use of FD or AP or HUD to DA.

MALS
AS

MISSED APPROACH: Climb to 3700 then climbing left turn to 6000 via LBB VORTAC R-114 to HYDRO INT/LBB 14.2 DME and hold, continue climb-in-hold to 6000.

ATIS 125.3 270.275	LUBBOCK APP CON 119.2 351.8	LUBBOCK TOWER 120.5 239.3	GND CON 121.9 348.6	CLNC DEL 125.8 281.55
-----------------------	--------------------------------	------------------------------	------------------------	--------------------------



LUBBOCK, TEXAS					
Amdt 18 05JAN17					

3700 ↑		6000 ↖ LBB R-114		HYDRO △		VGS1 and ILS glidepath not coincident (VGS1 Angle 3.00°/TCH 69°)		KEEVE INT I-LBB 6.1		CISAP INT I-LBB 11.5	
*LOC only.		I-LBB 2.1		*I-LBB 3		NUSNE I-LBB 3.5		4600		5100	

SC-2, 03 DEC 2020 to 31 DEC 2020

SC-2, 03 DEC 2020 to 31 DEC 2020