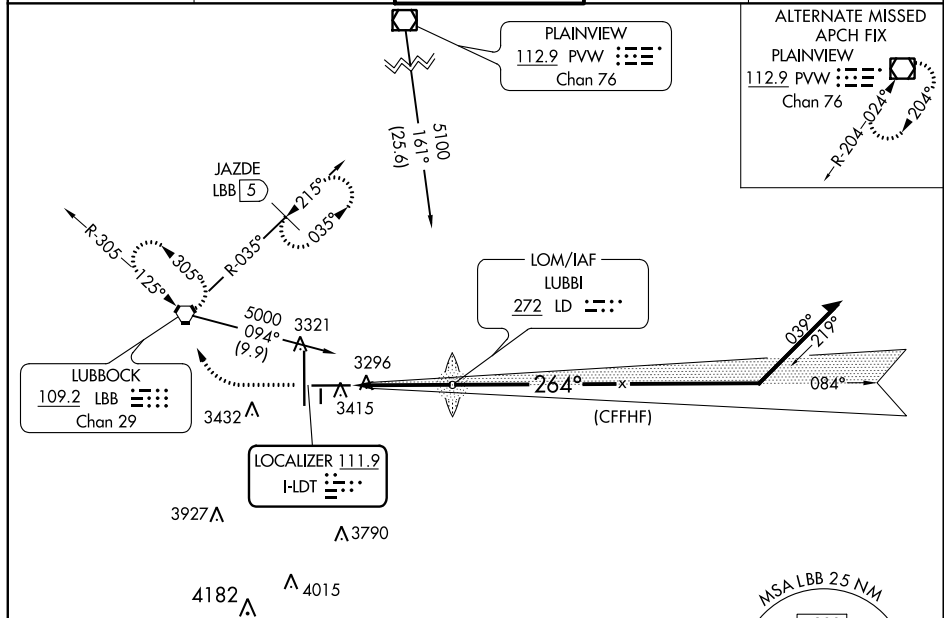
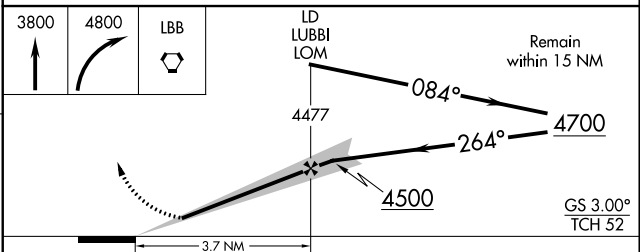
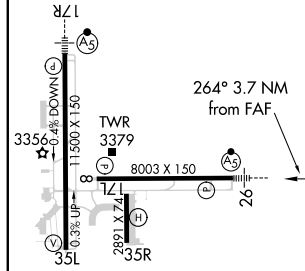


ILS or LOC RWY 26
LUBBOCK PRESTON SMITH INTL (LBB)

ATIS 125.3 270.275	LUBBOCK APP CON 119.2 351.8	LUBBOCK TOWER 120.5 239.3	GND CON 121.9 348.6	CLNC DEL 125.8 281.55
-----------------------	--------------------------------	------------------------------	------------------------	--------------------------



ADF OR RADAR REQUIRED



REIL Rwy 8					
HIRL Rwys 8-26 and 17R-35L					
FAF to MAP 3.7 NM					
Knots	60	90	120	150	180
Min:Sec	3:42	2:28	1:51	1:29	1:14

CATEGORY	A	B	C	D	E
S-LS 26	#3455/24 200 (200-½)				
S-LOC 26	3560/24 305 (300-½)				
C CIRCLING	3720-1 438 (500-1)	3740-1 458 (500-1)	3880-1/2 598 (600-1½)	3940-2 658 (700-2)	4100-3 818 (900-3)

SC-2, 03 DEC 2020 to 31 DEC 2020