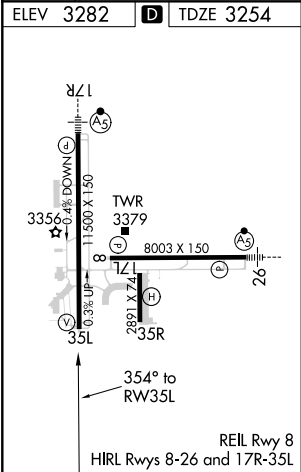
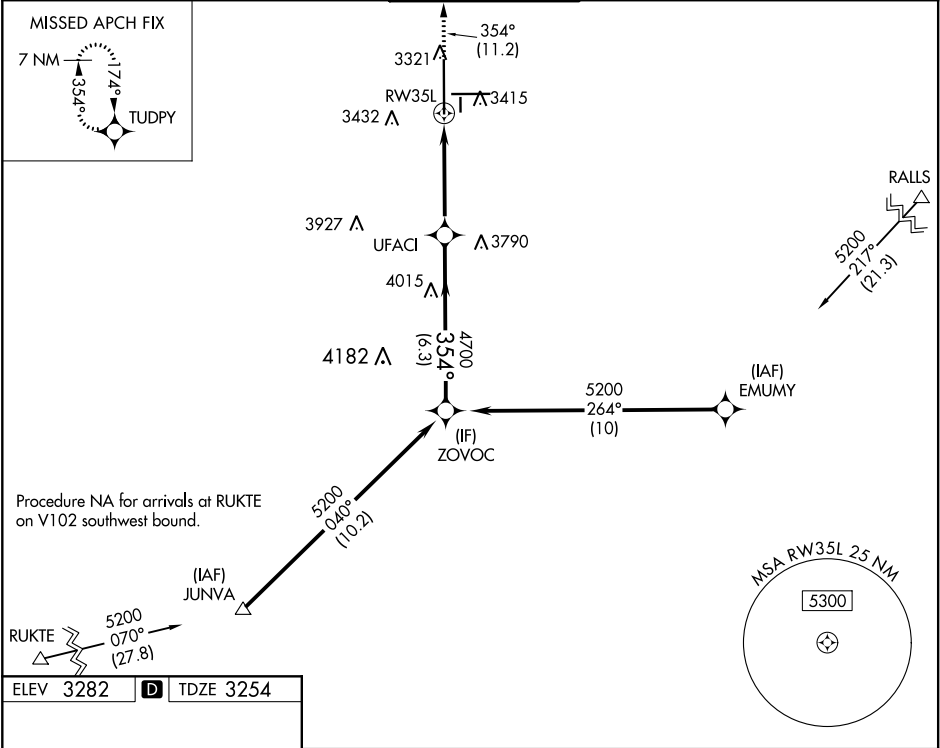


APP CRS	Rwy Idg	11500
354°	TDZE	3254
	Apt Elev	3282

RNAV (RNP) Z RWY 35L
LUBBOCK PRESTON SMITH INTL (LBB)

RNP AR APCH.	MISSED APPROACH: Climb to 5400 on track 354° to TUDPY and hold.
▼ For uncompensated Baro-VNAV systems, procedure NA below -12° C or above 51° C.	

ATIS 125.3 270.275	LUBBOCK APP CON 119.2 351.8	LUBBOCK TOWER 120.5 239.3	GND CON 121.9 348.6	CLNC DEL 125.8 281.55
-----------------------	--------------------------------	------------------------------	------------------------	--------------------------



5400	TUDPY	ZOVOC			
↑ tr 354°	✧	UFACI 4700	354°		5200
RW35L		4700		GP 3.00° TCH 54	
4.4 NM		6.3 NM			
CATEGORY	A	B	C	D	
RNP 0.18 DA	3559-7⁄8		305 (300-7⁄8)		
RNP 0.30 DA	3620-1 1⁄8		366 (400-1 1⁄8)		
AUTHORIZATION REQUIRED					

AUTHORIZATION REQUIRED