

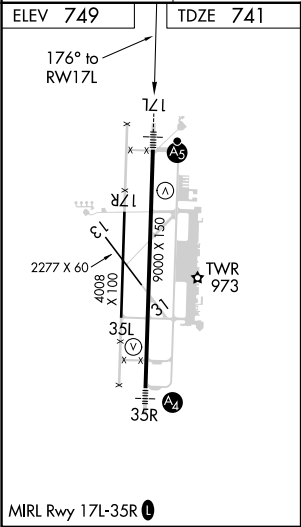
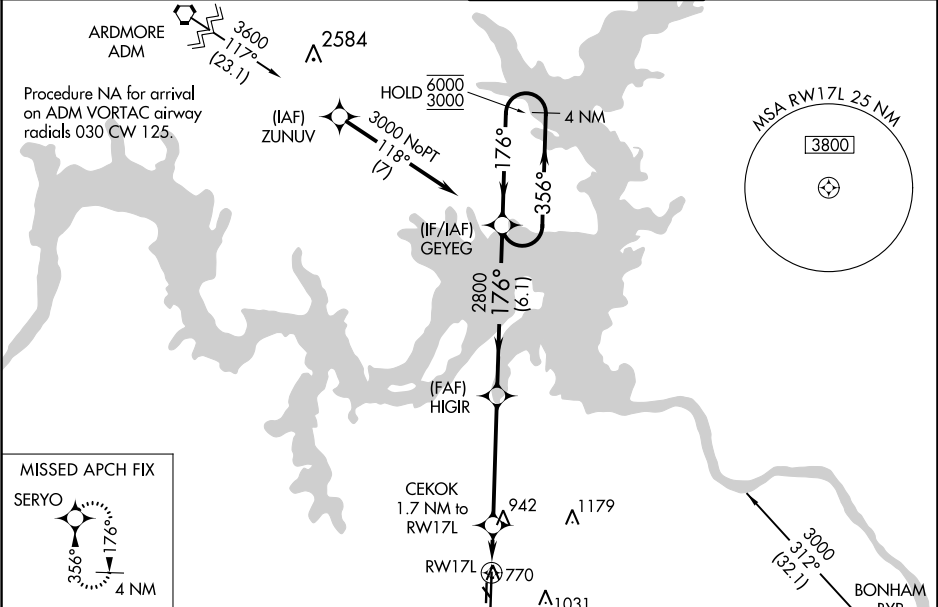
WAAS CH <b>86528</b> <b>W17A</b>	APP CRS <b>176°</b>	Rwy Idg <b>9000</b> TDZE <b>741</b> Apt Elev <b>749</b>
----------------------------------------	------------------------	---------------------------------------------------------------

RNAV (GPS) RWY 17L

NORTH TEXAS RGNL/PERRIN FIELD (GYI)

RNP APCH.		MALSR	MISSED APPROACH: Climb to 3000 direct SERYO and hold.
<div><div></div><div></div></div> <div>Circling Rwy 13, 17R, 31, 35L NA at night. For uncompensated Baro-VNAV systems, LNAV/VNAV NA below -16°C or above 54°C. For inop ALS, increase LNAV/VNAV all Cats visibility to ½ SM.</div>		<div><div></div><div></div></div>	

ATIS <b>118.775</b>	FORT WORTH CENTER <b>124.75 323.0</b>	NORTH TEXAS TOWER ★ <b>120.575 (CTAF) 233.7</b>	GND CON <b>124.125</b>
------------------------	------------------------------------------	----------------------------------------------------	---------------------------



3000 SERYO		VGSI and RNAV glidepath not coincident (VGSI angle 3.00/TCH 48).			
*LNAV only.		4 NM Holding Pattern			
CEKOK 1.7 NM to RW17L		GEYEG			
HIGIR 2800		356° 176° 6000 3000			
RW17L		GP 3.00° TCH 43			
1.7 NM		4.6 NM			
6.1 NM					
CATEGORY	A	B	C	D	
LPV DA	941-½		200 (200-½)		
LNAV/VNAV DA	1015-½		274 (300-½)		
LNAV MDA	1200-½ 459 (500-½)		1200-⅞ 459 (500-⅞)		
CIRCLING	1300-1 551 (600-1)		1400-1¾ 651 (700-1¾) 1540-2½ 791 (800-2½)		