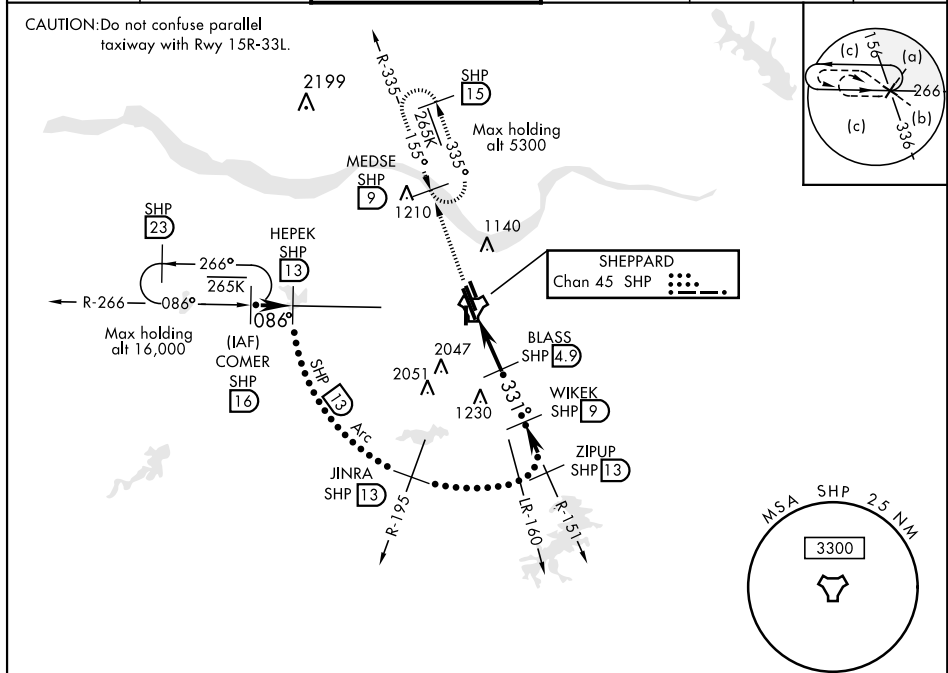


# HI-TACAN RWY 33C

TACAN SHP Chan <b>45</b>	APCH CRS <b>331°</b>	Rwy Idg THRE <b>989</b> Arpt Elev <b>1019</b>	JAL-454 [USAF]	SHEPPARD AFB/WICHITA FALLS MUNI (KSPS)
<p>▼ * When ALS inop, increase CAT CDE vis to 1 mile.  ** Circling not authorized W of Rwy 15R-33L.</p>				
ATIS ★ <b>132.05 269.9</b>	SHEPPARD APP CON <b>118.2 269.025</b>	SHEPPARD TOWER ★ <b>119.75 279.525 (CTAF)</b>	GND CON <b>125.5 289.4</b>	CLNC DEL <b>121.2 282.225</b>
			ASR	



EMERG SAFE ALT 100 NM 4600

<p>VGSI and descent angles not coincident.</p>			3300 SHP R-335	MEDSE SHP 9
<p>COMER R-266 HEPEK 13 JINRA R-195 ZIPUP R-151 TACAN KUPRE 0.7 BLASS 4.9 WIKEK 9</p>			<p>ELEV 1019 THRE 989</p>	
<p>10,000 086° 6000 331° 2300 2300 331° 2.51° TCH 48</p>			<p>REIL Rwy 15L, 33R, and 35 HIRL all Rwy's</p>	
CATEGORY	C	D	E	
S-33C *	1360-5%	371 (400-%)		
CIRCLING **	1480-1½ 461 (500-1½)	2020-3 1001 (1100-3)	2080-3 1061 (1100-3)	

# HI-TACAN RWY 33C