
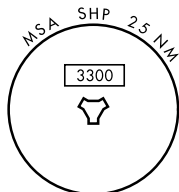
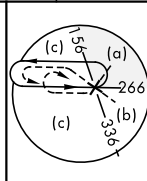
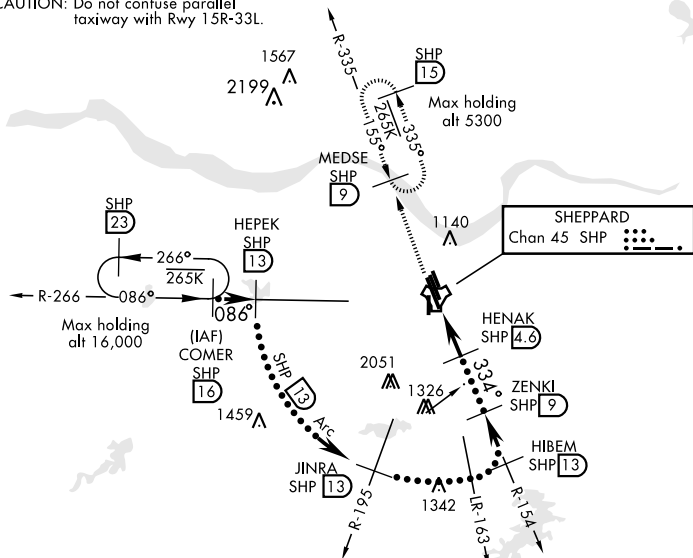


WICHITA FALLS, TEXAS

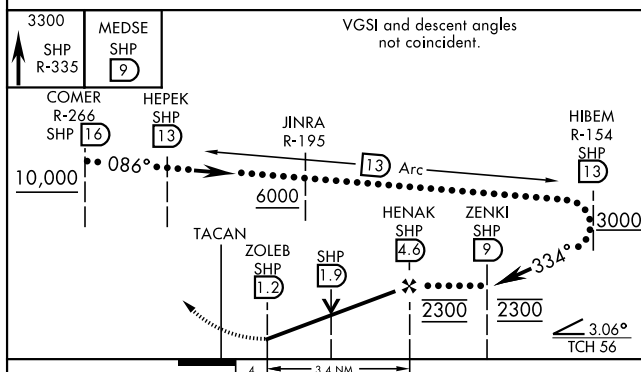
HI-TACAN RWY 33L

TACAN SHP Chan 45	APCH CRS 334°	Rwy Idg 13,100 THRE 1000 Arpt Elev 1019	JAL-454 [USAF]	SHEPPARD AFB/WICHITA FALLS MUNI (KSPS)		
V ** When ALS inop, increase CAT CDE vis to 1½ miles. ** Circling not authorized W of Rwy 15R-33L.				MISSED APPROACH: Climb and maintain 3300, intercept SHP TACAN R-335 to SHP R-335/9 DME (MEDSE) and hold.		
ATIS ★ 132.05 269.9	SHEPPARD APP CON 118.2 269.025	SHEPPARD TOWER ★ 119.75 279.525 (CTAF)	GND CON 125.5 289.4	CLNC DEL 121.2 282.225	ASR	

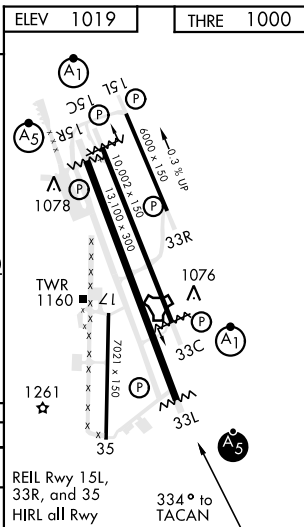
CAUTION: Do not confuse parallel taxiway with Rwy 15R-33L.



EMERG SAFE ALT 100 NM 4600



CATEGORY	C	D	E
S-33L *	1420- $\frac{3}{4}$	420 (500- $\frac{3}{4}$)	
C CIRCLING **	1480-1 $\frac{1}{2}$ 461 (500-1 $\frac{1}{2}$)	2020-3 1001 (1100-3)	2080-3 1061 (1100-3)



WICHITA FALLS, TEXAS

33°59'N-98°30'W

SHEPPARD AFB/WICHITA FALLS MUNI (KSPS)

HI-TACAN RWY 33L

Amdt 6 09JAN14

SC-2, 03 DEC 2020 to 31 DEC 2020