

WICHITA FALLS, TEXAS

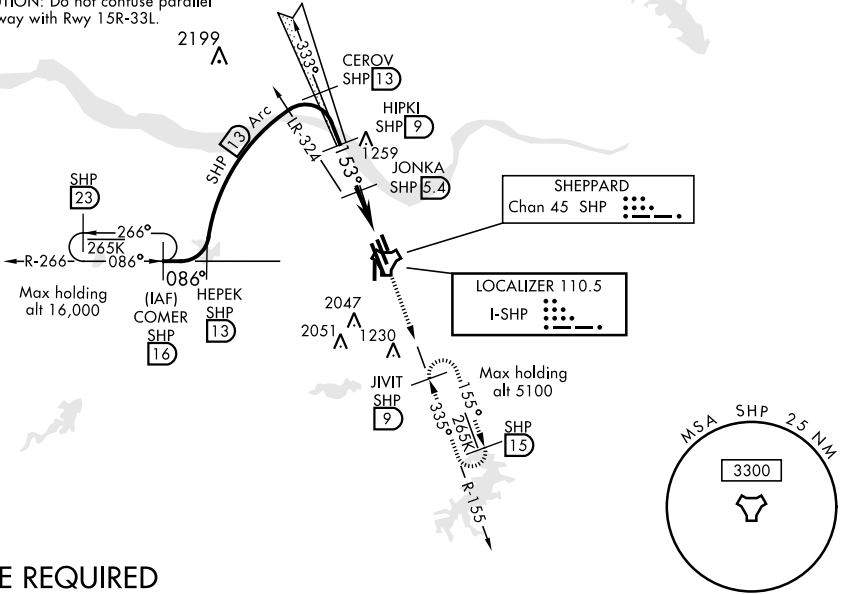
ILS or LOC/DME RWY 15C

LOC I-SHP 110.5	APCH CRS 153°	Rwy Idg 15C 10,002 15R 13,100 THRE 15C 1003 15R 998 Arpt Elev 1019	ALS-F-15C Rwy 15C (A1)			MALSR Rwy 15R (A5)			MISSED APPROACH: Climb and maintain 3100, intercept SHP TACAN R-155 to SHP R-155/9 DME (JIVIT) and hold.											
* When ALS inop, increase all CATs vis to ¾ mile. ** When ALS inop, increase CAT AB vis to 1 mile, CAT CDE vis to 1½ miles.			ATIS ★ 132.05 269.9			SHEPPARD APP CON 118.2 269.025			SHEPPARD TOWER ★ 119.75 279.525 (CTAF)			GND CON 125.5 289.4			CLNC DEL 121.2 282.225			ASR		

*** When ALS inop, increase CAT AB vis to 1 mile,
CAT CDE vis to 1½ miles.

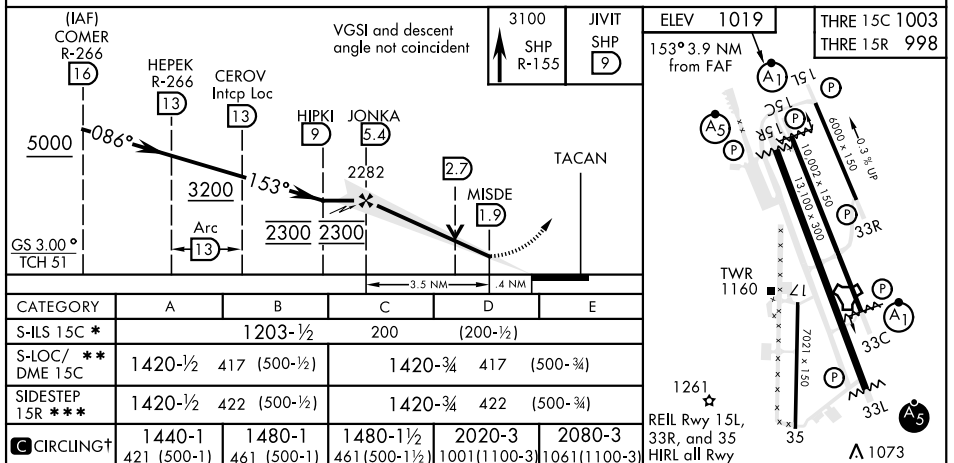
† Circling not authorized W of Rwy 15R-33L.

CAUTION: Do not confuse parallel
taxiway with Rwy 15R-33L.



DME REQUIRED

EMERG SAFE ALT 100 NM 4600



WICHITA FALLS, TEXAS 33°59'N-98°30'W

Amdt 8 09JAN14

SHEPPARD AFB/WICHITA FALLS MUNI (KSPS)

ILS or LOC/DME RWY 15C