

RNAV (GPS) RWY 15C

APCH CRS 153°	Rwy Idg 10,002 TDZE 1003 Arpt Elev 1019
-------------------------	--

AL-454 [USAF]

SHEPPARD AFB/WICHITA FALLS MUNI

(KSPS)

T * When ALS inop, increase vis to 1/8 miles.
 ** When ALS inop, increase CAT AB vis to 1 mile; CAT CDE vis to 1/8 miles.
 *** Circling NA southwest of Rwy 15R-33L.

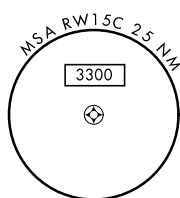
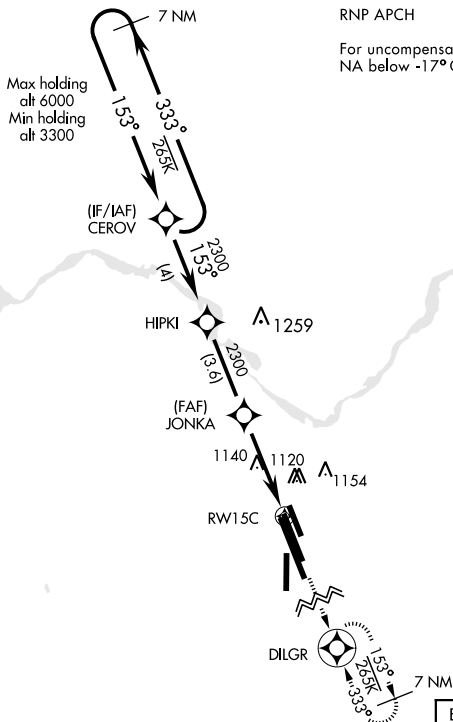


MISSED APPROACH: Climb to 3100 direct DILGR and hold.

ATIS ★ 132.05 269.9	SHEPPARD APP CON 118.2 269.025	SHEPPARD TOWER ★ 119.75 0 279.525 (CTAF)	GND CON 125.5 289.4	CLNC DEL 121.2 282.225	ASR
------------------------	-----------------------------------	---	------------------------	---------------------------	-----

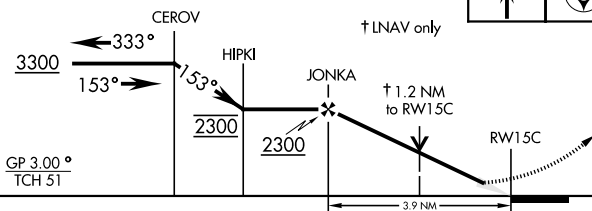
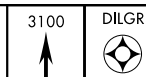
RNP APCH

For uncompensated Baro-VNAV systems, LNAV/VNAV NA below -17°C (2°F) or above 54°C (130°F).

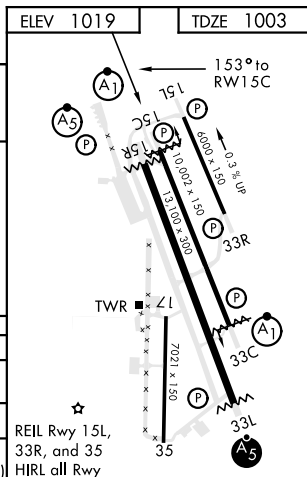


EMERG SAFE ALT 100 NM 4600

VGSI and RNAV glidepath not coincident (VGSI Angle 3.00/TCH 46).



CATEGORY	A	B	C	D	E
LNAV/VNAV DA*	1397-5%		394	(400-5%)	
LNAV MDA**	1420-1/2	417 (500-1/2)	1420-3/4	417 (500-3/4)	
*** CIRCLING	1440-1 421 (500-1)	1480-1 461 (500-1)	1480-1 1/2 461 (500-1 1/2)	2020-3 1001(1100-3)	2080-3 1061(1100-3)



WICHITA FALLS, TEXAS

33°59'N-98°30'W

SHEPPARD AFB/WICHITA FALLS MUNI

(KSPS)

Orig 21MAY20

RNAV (GPS) RWY 15C

SC-2, 03 DEC 2020 to 31 DEC 2020

SC-2, 03 DEC 2020 to 31 DEC 2020