

RNAV (GPS) RWY 15R

APCH CRS 153°	Rwy Idg 13,100 TDZE 998 Arpt Elev 1019
-------------------------	---

AL-454 [USAF]

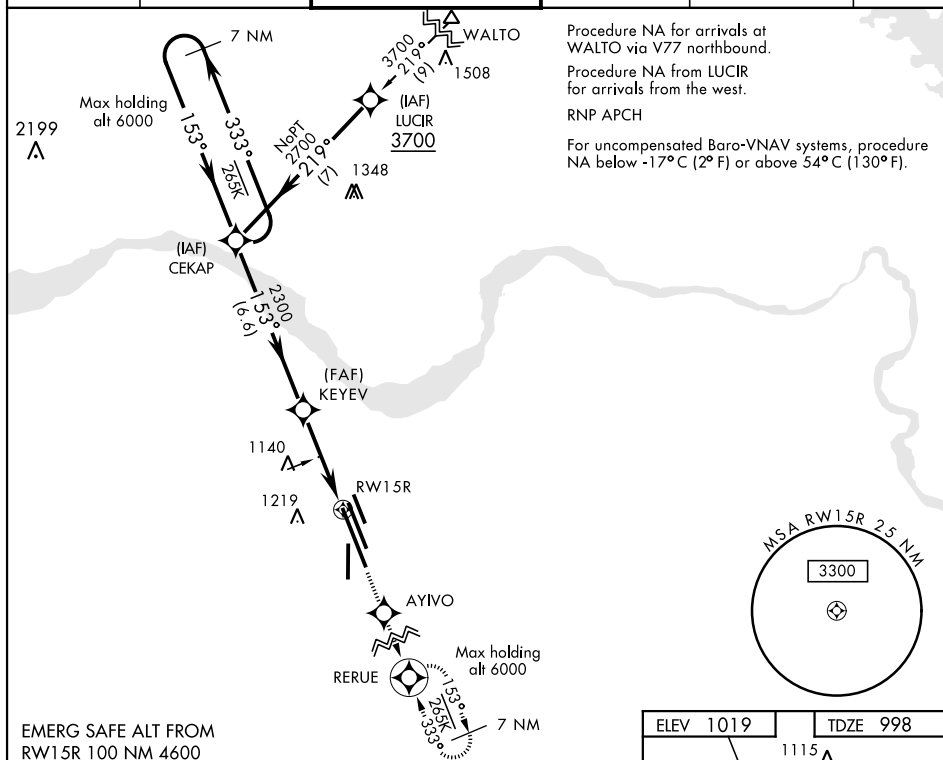
SHEPPARD AFB/WICHITA FALLS MUNI (KSPS)

T * When ALS inop, increase CAT A vis to $\frac{3}{4}$ mile; CAT BCDE vis to $\frac{7}{8}$ mile.
 ** When ALS inop, increase CAT AB vis to 1 mile; CAT CDE vis to $1\frac{1}{4}$ miles.
 *** Circling NA West of Rwy 15R-33L.

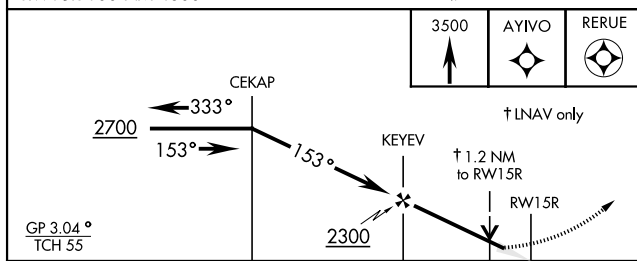


MISSED APPROACH: Climb to 3500 direct AYIVO and via 153° track to RERUE and hold.

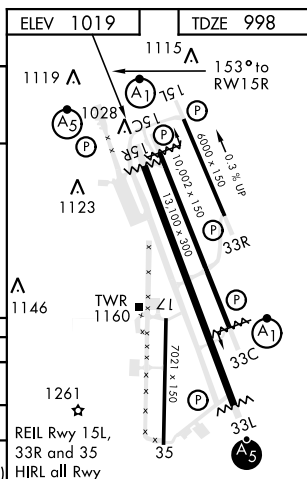
ATIS ★	SHEPPARD APP CON	SHEPPARD TOWER ★	GND CON	CLNC DEL	ASR
132.05 269.9	118.2 269.025	119.75 0 279.525 (CTAF)	125.5 289.4	121.2 282.225	



EMERG SAFE ALT FROM
RW15R 100 NM 4600



CATEGORY		A	B	C	D	E
LNNAV/VNAV DA*	1255-½ 257 (300-½)	1266-½ 268 (300-½)	1274-½ 276 (300-½)	1285-½ 287 (300-½)		
LNNAV MDA**	1420-½ 422 (500-½)	1420-¾ 422 (500-¾)				
CIRCLING***	1440-1 421 (500-1)	1480-1 461 (500-1)	1480-1 461 (500-1)	2020-3 1001(1100-3)	2080-3 1061(1100-3)	



WICHITA FALLS, TEXAS

33°59'N-98°30'W

SHEPPARD AFB/WICHITA FALLS MUNI (KSPS)

RNAV (GPS) RWY 15R

Amdt 4 21MAY20

SC-2, 03 DEC 2020 to 31 DEC 2020