

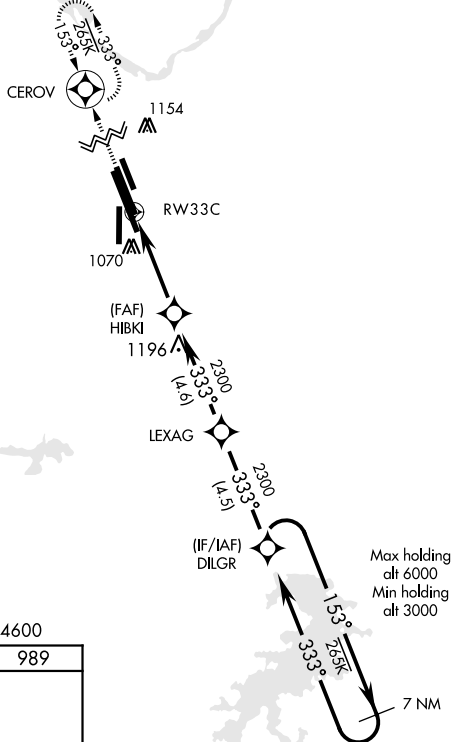
## RNAV (GPS) RWY 33C

SHEPPARD AFB/WICHITA FALLS MUNI (KSPS)

**MISSED APPROACH:** Climb to 3300 direct CEROV and hold.

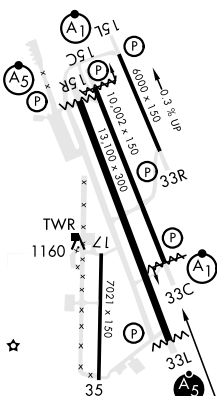
ASR

For uncompensated Baro-VNAV systems, LNAV/VNAV NA below -17°C (2°F) or above 54°C (130°F).

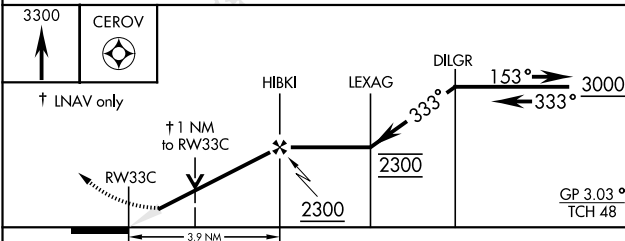


EMERG SAFE ALT 100 NM 4600

ELEV 1019		TDZE 989
-----------	--	----------



REIL Rwy 15L,  
33R, and 35  
HIRL all Rwy



CATEGORY	A	B	C	D	E
LNNAV/VNAV DA *	1322-½		333	(400-½)	
LNNAV MDA *	1360-½	371 (400-½)	1360-⅝ 371 (400-⅝)		
C CIRCLING **	1440-1	1480-1	1480-1½	2020-3	2080-3
	421 (500-1)	461 (500-1)	461 (500-1½)	1001 (1100-3)	1061 (1100-3)

33°59'N-98°30'W

SHEPPARD AFB/WICHITA FALLS MUNI (KSPS)

## RNAV (GPS) RWY 33C