


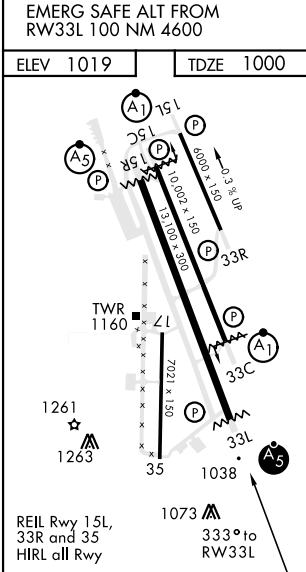
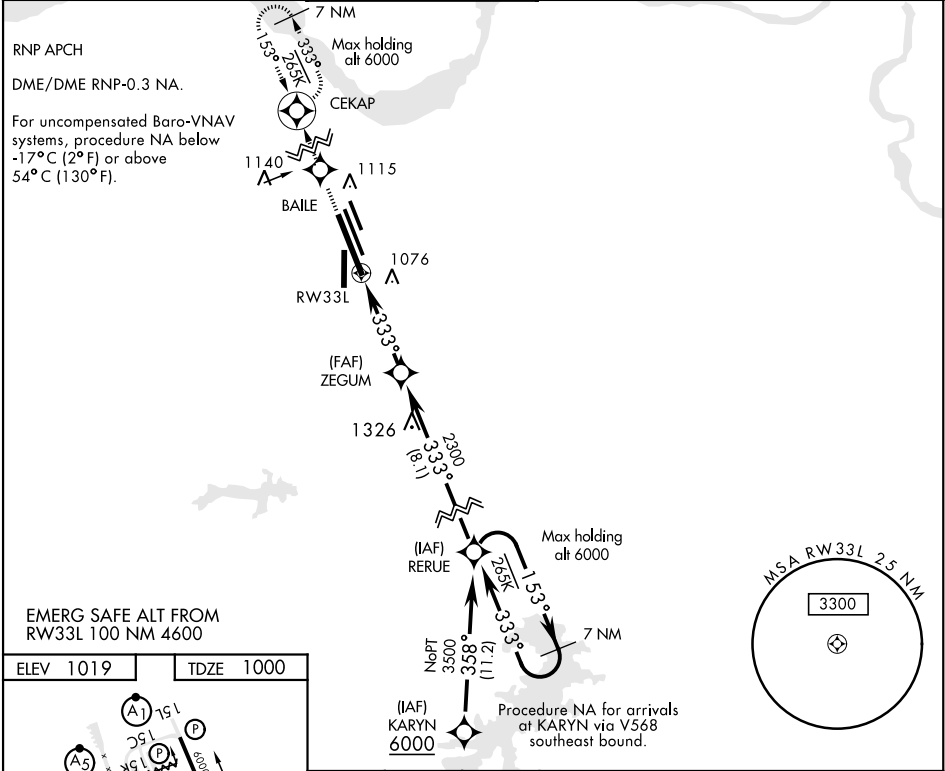
APCH CRS 333°	Rwy ldg 13,100 TDZE 1000 Arpt Elev 1019
-------------------------	--




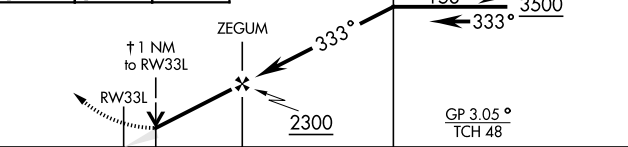

AL-454 [USAF]

RNAV (GPS) RWY 33L

SHEPPARD AFB/WICHITA FALLS MUNI (KSPS)

▼ * When ALS inop, increase vis to ¾ mile. ** When ALS inop, increase vis to 1 mile. *** Circling NA West of Rwy 15R-33L.			MALSR 		MISSED APPROACH: Climb to 3000 via 333° track to BAILE, and via 333° track to CEKAP and hold.						
ATIS ★ 132.05 269.9		SHEPPARD APP CON 118.2 269.025		SHEPPARD TOWER ★ 119.75 0 279.525 (CTAF)		GND CON 125.5 289.4		CLNC DEL 121.2 282.225		ASR	



						VGSI and Glideslope not coincident (VGSI Angle 3.00/TCH 56).					
						† LNAV only					
CATEGORY		A		B		C		D		E	
LNAV/VNAV DA *		1255-½ 255 (300-½)									
LNAV MDA **		1360-½		360 (400-½)		1360-⅝		360 (400-⅝)			
***  CIRCLING		1440-1 421 (500-1)		1480-1 461 (500-1)		1480-1 461 (500-1½)		2020-3 1001 (1100-3)		2080-3 1061 (1100-3)	

RNAV (GPS) RWY 33L