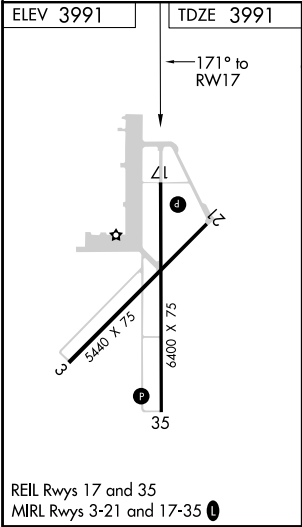
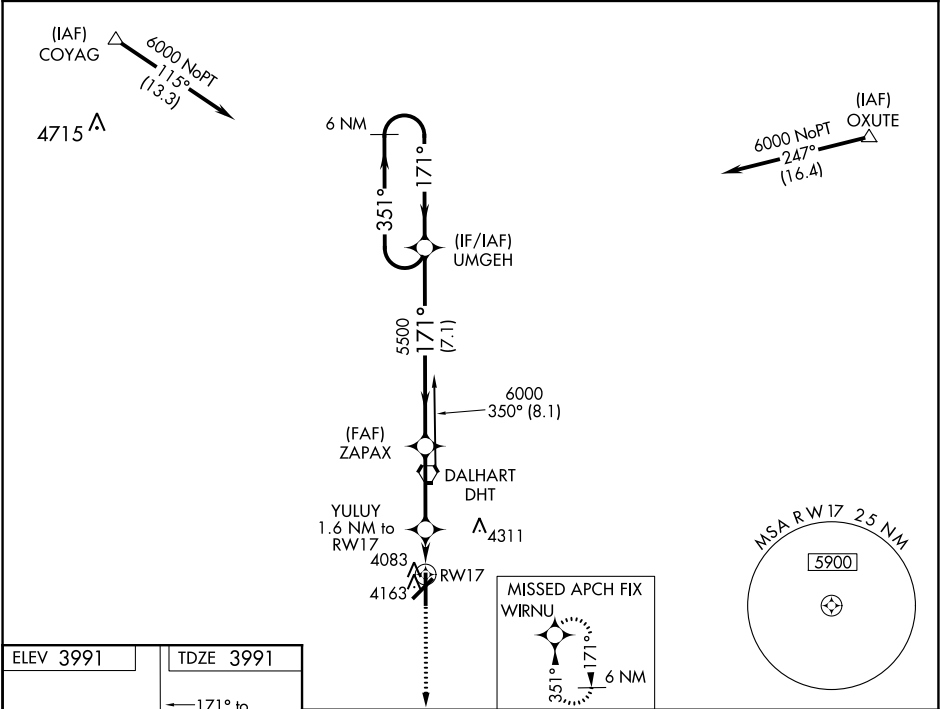


WAAS CH 97435 W17A	APP CRS 171°	Rwy Idg TDZE 3991 Apt Elev 3991
--	------------------------	---

RNAV (GPS) RWY 17
DALHART MUNI (DHT)

⚠ For uncompensated Baro-VNAV systems, LNAV/VNAV NA below -16°C (4°F) or above 51°C (124°F). Circling NA west of Rwy 17-35. DME/DME RNP-0.3 NA.	MISSED APPROACH: Climb to 6000 direct WIRNU and hold.
---	---

ASOS 134.075	ALBUQUERQUE CENTER 127.85 285.475	UNICOM 122.95 (CTAF) 0
------------------------	---	----------------------------------



6000 WIRNU	VGSI and RNAV glidepath not coincident (VGSI Angle 3.00/TCH 25).			
*LNAV only	YULUY 1.6 NM to RW17	ZAPAX 5500	UMGEH 6 NM Holding Pattern	
	*1 NM to RW17	*4540	5500	GP 3.00° TCH 50
	1	0.6	3 NM	7.1 NM
CATEGORY	A	B	C	D
LPV DA		4241-¾	250 (300-¾)	
LNAV/VNAV DA		4270-⅞	279 (300-⅞)	
LNAV MDA		4340-1	349 (400-1)	
C CIRCLING	4380-1 389 (400-1)	4660-1 669 (700-1)	4660-1¾ 669 (700-1¾)	4660-2 669 (700-2)