

TYLER, TEXAS

AL-622 (FAA)

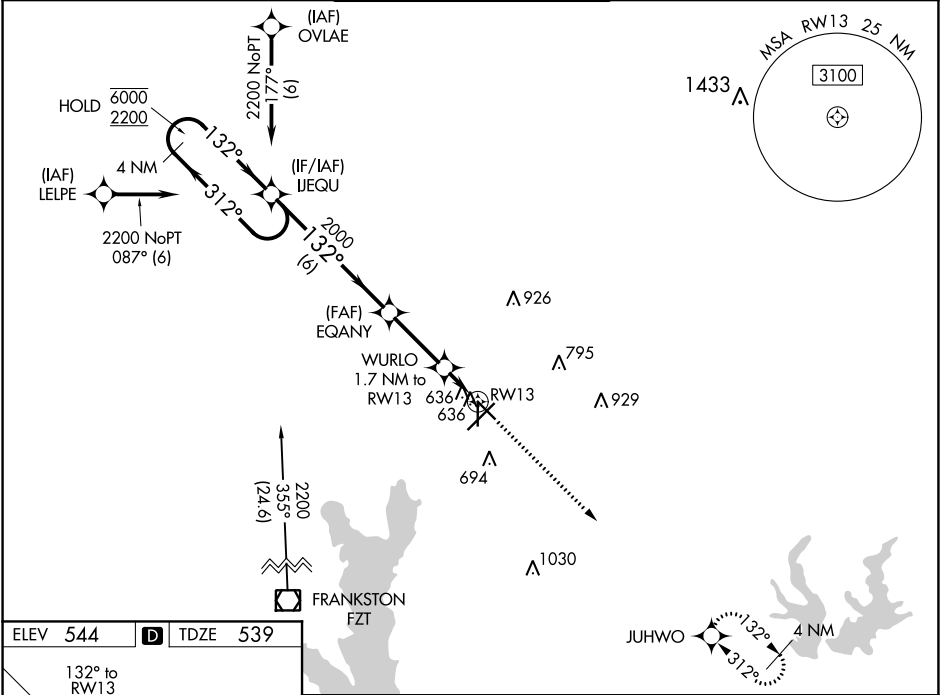
20310

WAAS CH 45701 W13A	APP CRS 132°	Rwy Idg 5200 TDZE 539 Apt Elev 544
--	------------------------	---

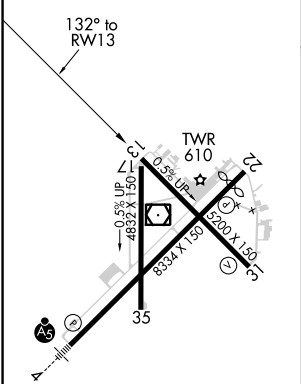
RNAV (GPS) RWY 13
TYLER POUNDS RGNL (TYR)

RNP APCH.		MISSED APPROACH: Climb to 3000 direct JUHWO and hold.		
▼ ▲ For uncompensated Baro-VNAV systems, LNAV/VNAV NA below -5°C or above 54°C.				

ATIS 126.25	LONGVIEW APP CON ★ 128.75 379.15	POUNDS TOWER★ 120.1(CTAF) 257.8	GND CON 121.9	UNICOM 122.95
-----------------------	--	---	-------------------------	-------------------------



ELEV 544	D	TDZE 539
-----------------	----------	-----------------



REIL Rwy 22
MIRL Rwy 17-35
HIRL Rwy 4-22 and 13-31

<div>4 NM Holding Pattern</div> <div>IJEQU</div> <div>EQANY</div> <div>WURLO 1.7 NM to RW13</div> <div>3000</div> <div>JUHWO</div> <div>6000 ← 312°</div> <div>2200 → 132°</div> <div>132°</div> <div>2000</div> <div>2000</div> <div>*1 NM to RW13</div> <div>RW13</div> <div>*LNAV only.</div> <div>GP 3.00°</div> <div>TCH 55</div> <div>6 NM</div> <div>2.8 NM</div> <div>0.7</div> <div>1 NM</div>				
CATEGORY	A	B	C	D
LPV DA	739-3/4 200 (200-3/4)			
LNAV/VNAV DA	820-7/8 281 (300-7/8)			
LNAV MDA	900-1 361 (400-1)			
CIRCLING	980-1 436 (500-1)	1020-1 476 (500-1)	1160-13/4 616 (700-13/4)	1280-21/4 736 (800-21/4)

TYLER, TEXAS
Amdt 3A 08OCT20

32°21'N-95°24'W

TYLER POUNDS RGNL (TYR)
RNAV (GPS) RWY 13

SC-2, 03 DEC 2020 to 31 DEC 2020

SC-2, 03 DEC 2020 to 31 DEC 2020