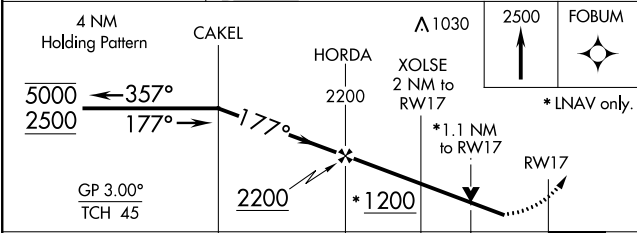
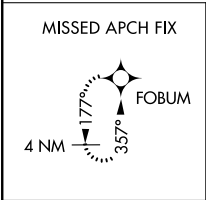
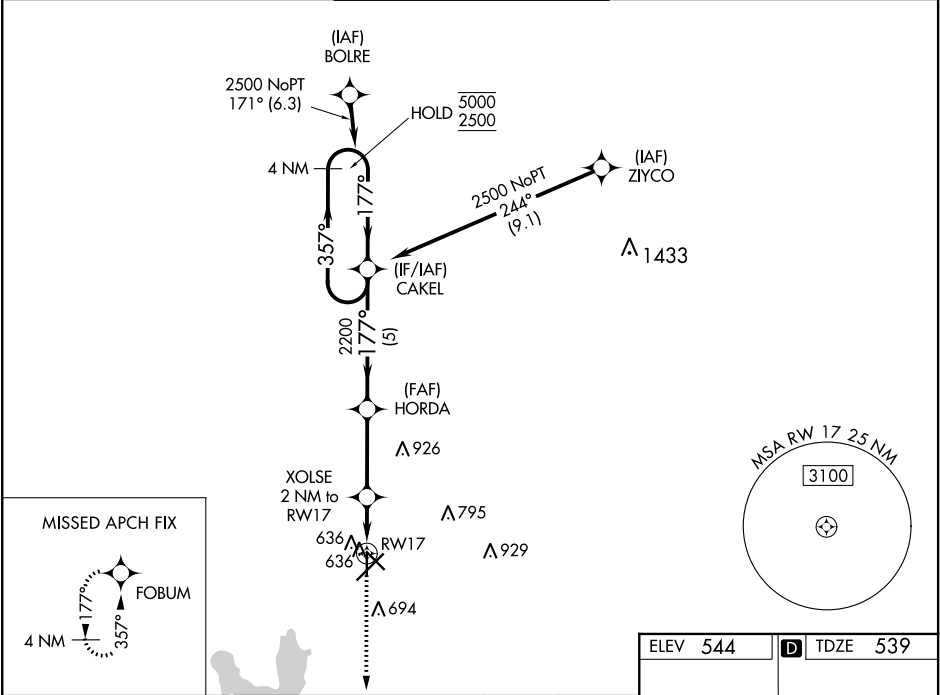


WAAS CH 58337 W17A	APP CRS 177°	Rwy Idg 4832 TDZE 539 Apt Elev 544
--	------------------------	---

RNAV (GPS) RWY 17
TYLER POUNDS RGNL (TYR)

RNP APCH.	MISSED APPROACH: Climb to 2500 direct FOBUM and hold.
Rwy 17 helicopter visibility reduction below ¾ NA. For uncompensated Baro-VNAV systems, LNAV/VNAV NA below -5°C or above 54°C.	

ATIS 126.25	LONGVIEW APP CON ★ 128.75 379.15	POUNDS TOWER★ 120.1(CTAF) 257.8	GND CON 121.9	UNICOM 122.95
-----------------------	--	---	-------------------------	-------------------------



CATEGORY	A	B	C	D
LPV DA	789-1	250 (300-1)		
LNAV/ VNAV DA	818-1	279 (300-1)		
LNAV MDA	900-1	361 (400-1)		
CIRCLING	980-1 436 (500-1)	1020-1 476 (500-1)	1160-1¾ 616 (700-1¾)	1280-2¼ 736 (800-2¼)

