

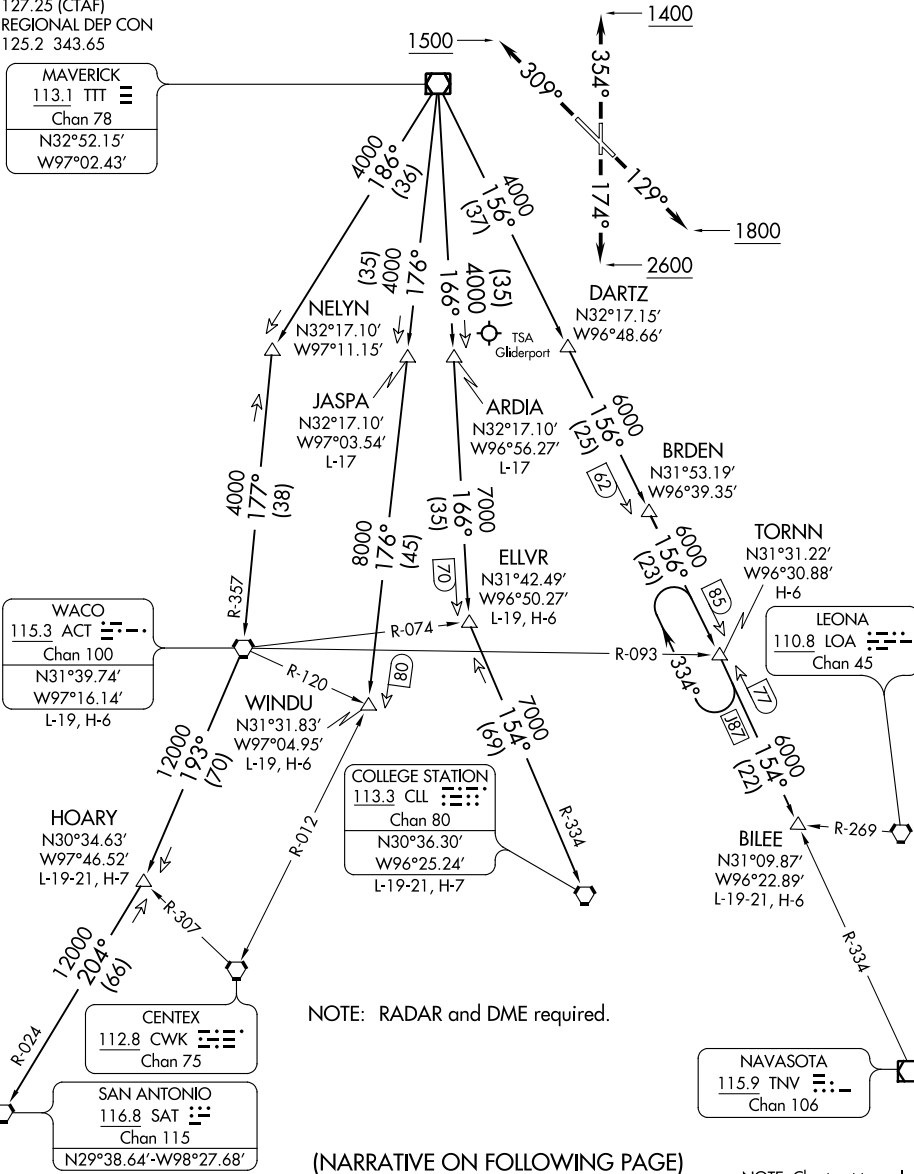
JOE POOL ONE DEPARTURE

ATIS
126.35
CLNC DEL
118.625
GND CON
119.475
EXECUTIVE TOWER ★
127.25 (CTAF)
REGIONAL DEP CON
125.2 343.65

MAVERICK
113.1 TTT
Chan 78
N32°52.15'
W97°02.43'

TAKEOFF MINIMUMS

Rwys 13, 31, 35: Standard.
Rwys 17: 400-2¾ or standard with a minimum climb of 220' per NM to 1200.



JOE POOL ONE DEPARTURE