

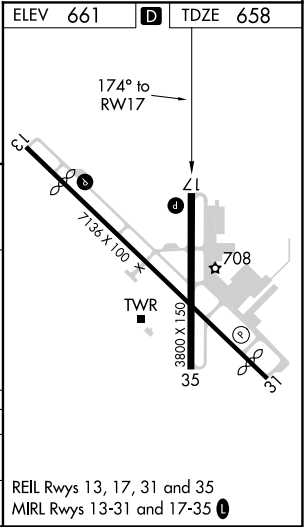
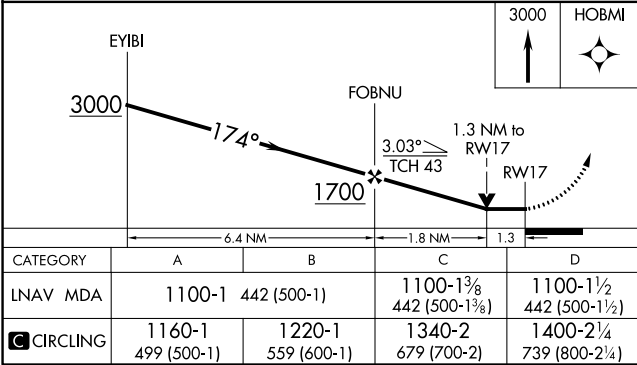
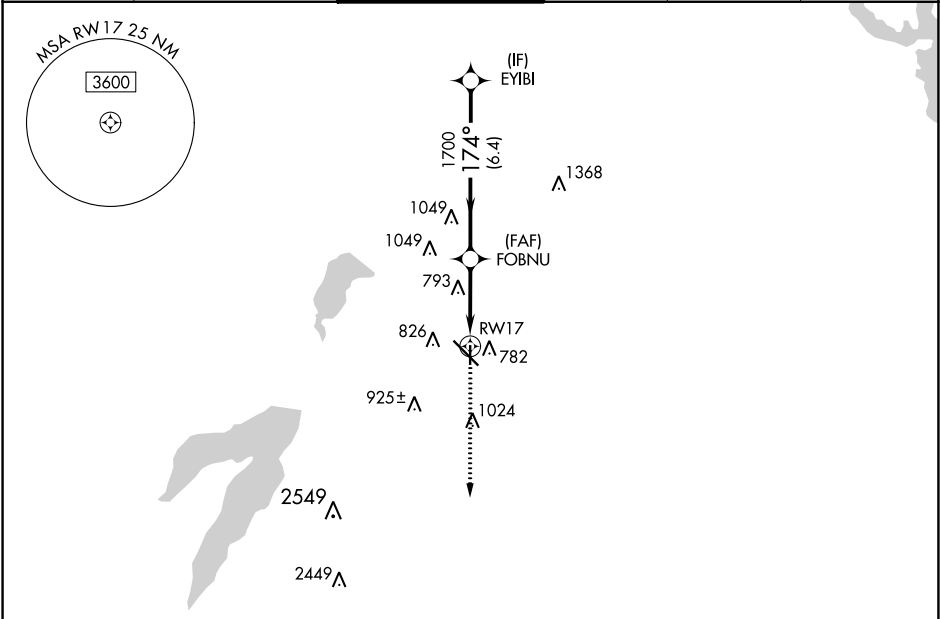
APP CRS	Rwy Idg	3800
174°	TDZE	658
	Apt Elev	661

RNAV (GPS) RWY 17

DALLAS EXECUTIVE (RBD)

RNP APCH.	MISSED APPROACH: Climb to 3000 direct HOBMI and hold.
<div><div></div><div>Rwy 17 helicopter visibility reduction below ¾ SM NA.</div></div>	

ATIS 126.35	REGIONAL APP CON 125.2 343.65	EXECUTIVE TOWER ★ 127.25 (CTAF) 0	GND CON 119.475	CLNC DEL 118.625	UNICOM 122.95
----------------	----------------------------------	--------------------------------------	--------------------	---------------------	------------------



SC-2, 03 DEC 2020 to 31 DEC 2020

SC-2, 03 DEC 2020 to 31 DEC 2020