

DALLAS, TEXAS

AL-742 (FAA)

20338

WAAS CH <b>42699</b> <b>W31A</b>	APP CRS <b>309°</b>	Rwy Idg <b>6601</b> TDZE <b>660</b> Apt Elev <b>661</b>
--	------------------------	---

RNAV (GPS) RWY 31  
DALLAS EXECUTIVE (RBD)


RNP APCH.

**T** For uncompensated Baro-VNAV systems, LNAV/VNAV  
**A** NA below -2°C or above 54°C.

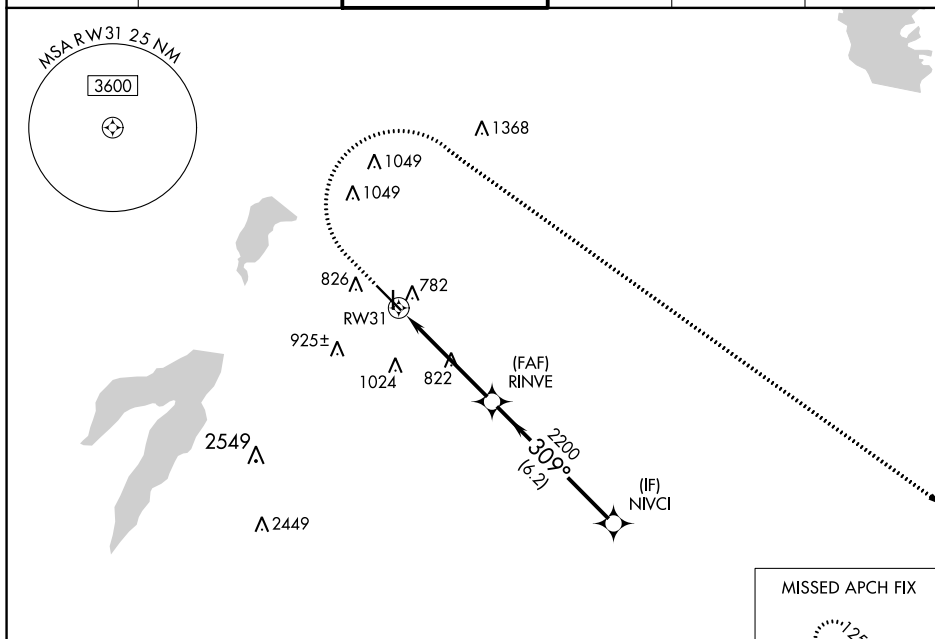
**MISSED APPROACH:** Climb to 1200 then climbing right turn to 2500 direct FLIPP and hold.

ATIS  
126.35

REGIONAL APP CON  
125 2 343 65

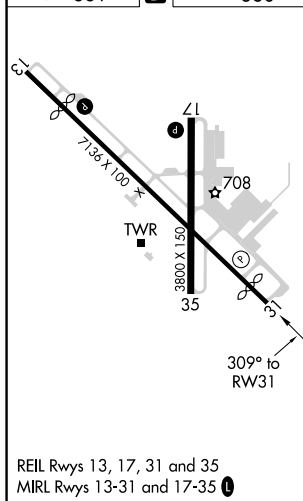
EXECUTIVE TOWER ★  
127.25 (CTAF) 

GND CON  
119.475

CLNC DEL  
118 625UNICOM  
122.95

SC-2, 03 DEC 2020 to 31 DEC 2020

ELEV 661	<b>D</b>	TDZE 660
----------	----------	----------



DALLAS, TEXAS  
Amdt 1B 03DEC20

32°41'N-96°52'W

DALLAS EXECUTIVE (RBD)  
RNAV (GPS) RWY 31

1200 ↑	2500 ↗	FLIPP △				
*LNAV only.			GP 3.00° TCH 45			
CATEGORY	A		B	C	D	
LPV DA	860- <sup>3</sup> / <sub>4</sub>		200 (200- <sup>3</sup> / <sub>4</sub> )			
LNAV/ VNAV DA	993-1		333 (400-1)			
LNAV MDA	1080-1 420 (500-1)		1080-1 <sup>1</sup> / <sub>8</sub>		420 (500-1 <sup>1</sup> / <sub>8</sub> )	
CIRCLING	1160-1 499 (500-1)	1220-1 559 (600-1)	1340-2 679 (700-2)		1400-2 <sup>1</sup> / <sub>4</sub> 739 (800-2 <sup>1</sup> / <sub>4</sub> )	