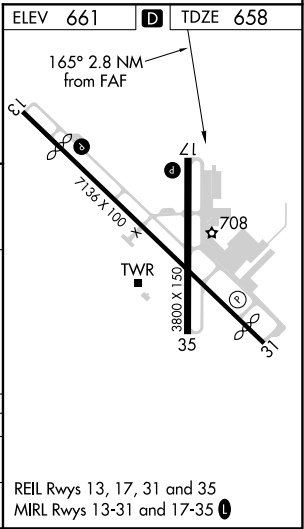
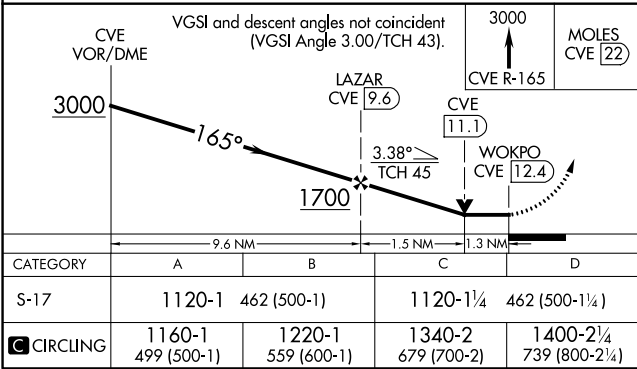
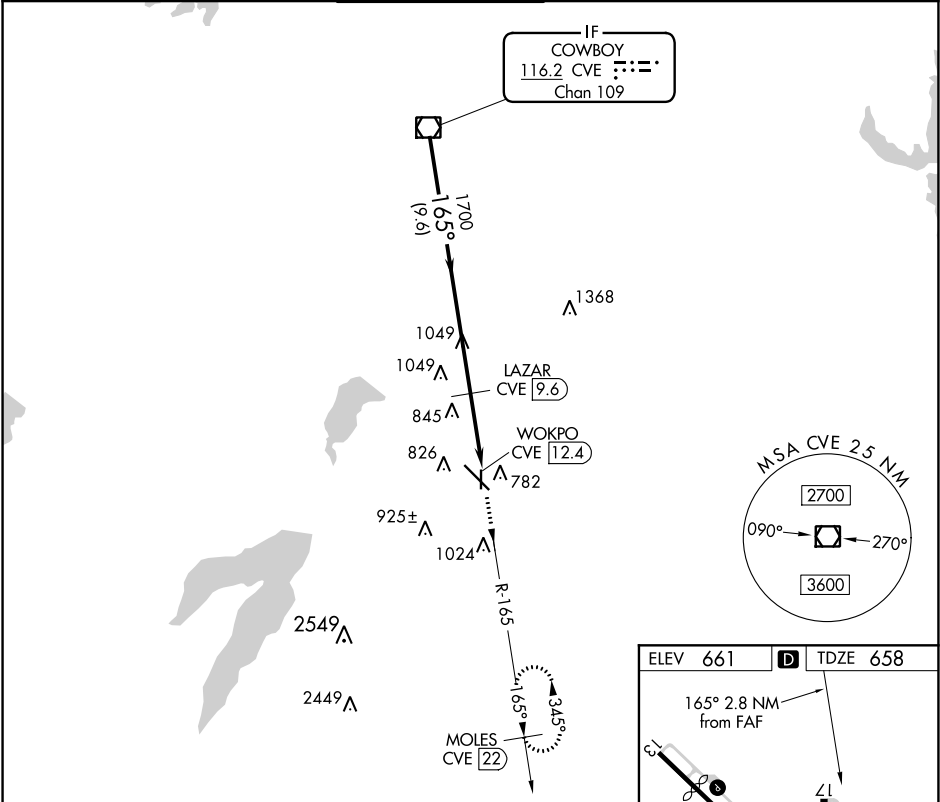


VOR/DME CVE	APP CRS	Rwy Idg	3800
116.2	165°	TDZE	658
Chan 109		Apt Elev	661

VOR RWY 17
DALLAS EXECUTIVE (RBD)

DME required. RADAR required for procedure entry.	MISSED APPROACH: Climb to 3000 on CVE VOR/DME R-165 to MOLES/22 DME and hold.
Rwy 17 helicopter visibility reduction below 3/4 SM NA.	

ATIS 126.35	REGIONAL APP CON 125.2 343.65	EXECUTIVE TOWER ★ 127.25 (CTAF)	GND CON 119.475	CLNC DEL 118.625	UNICOM 122.95
----------------	----------------------------------	------------------------------------	--------------------	---------------------	------------------



SC-2, 03 DEC 2020 to 31 DEC 2020

SC-2, 03 DEC 2020 to 31 DEC 2020