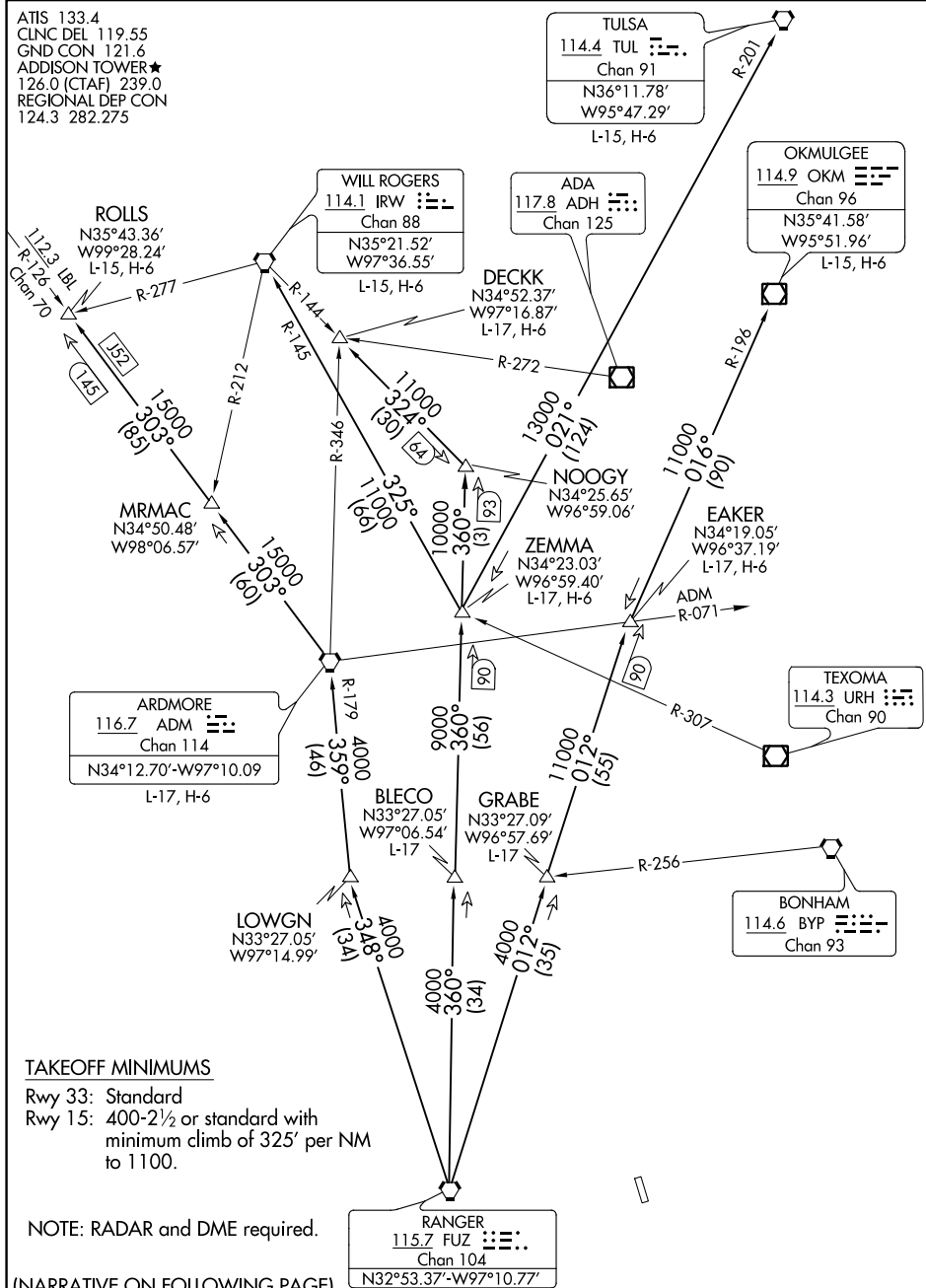


ATIS 133.4
CLNC DEL 119.55
GND CON 121.6
ADDISON TOWER★
126.0 (CTAF) 239.0
REGIONAL DEP CON
124.3 282.275



TAKEOFF MINIMUMS

Rwy 33: Standard
Rwy 15: 400-2½ or standard with
minimum climb of 325' per NM
to 1100.

NOTE: RADAR and DME required.

(NARRATIVE ON FOLLOWING PAGE) N32°5
(NOTES CONTINUED ON FOLLOWING PAGE)

NOTE: Chart not to scale