

LOC I-GGG	APP CRS	Rwy Idg	9200
109.5	131°	TDZE	358
		Apt Elev	365

ILS or LOC RWY 13
EAST TEXAS RGNL (GGG)

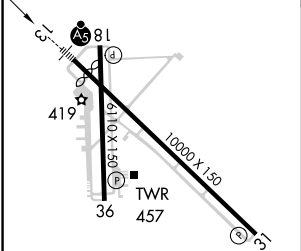
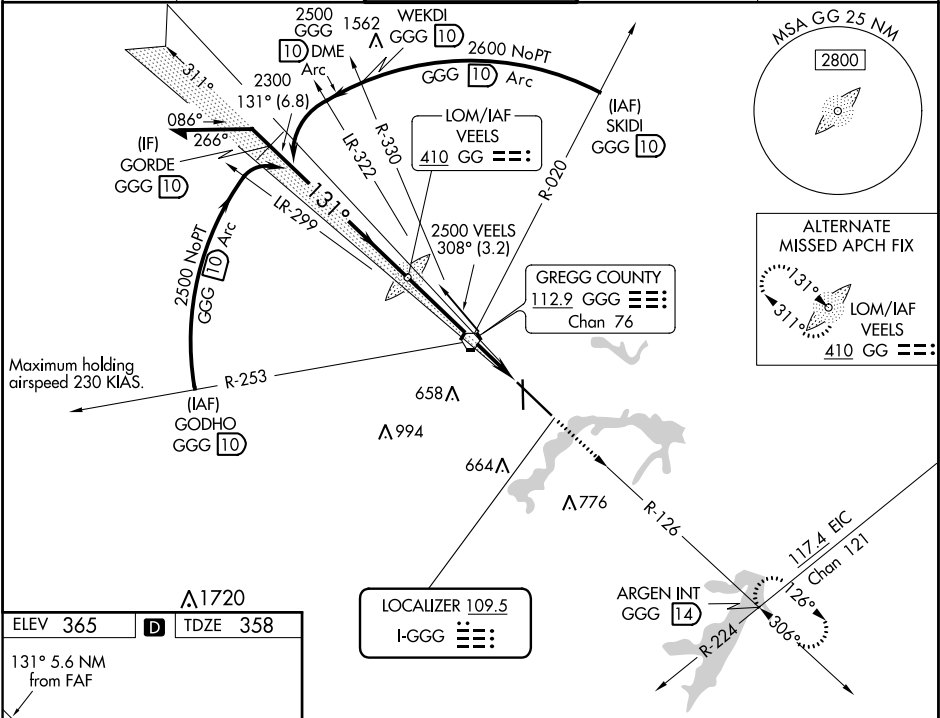
ADF or DME required for procedure entry.

▼ For inoperative MALSR, increase S-ILS-13 Cat E visibility to RVR 4000, S-LOC-13 Cat E visibility to 1¾. When local altimeter setting not received, use Gilmer altimeter setting and increase all DA 59 feet, all MDA 60 feet and visibility S-LOC 13 and circling Cat D, E ¼ mile. For inoperative MALSR when using Gilmer altimeter setting, increase visibility S-ILS 13 all Cats to RVR 5000 and S-LOC 13 Cat E to 2. * RVR 1800 authorized with the use of FD or AP or HUD to DA (NA when using Gilmer altimeter setting).

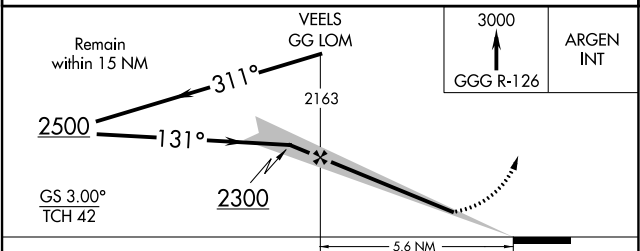
MALSR

MISSED APPROACH:
Climb to 3000 via GGG
VORTAC R-126 to
ARGEN Int/GGG 14 DME
and hold.

ATIS 119.65	LONGVIEW APP CON★ 128.75 379.15	EASTEX TOWER★ 119.2 (CTAF) 0377.05	GND CON 121.6	UNICOM 122.95
----------------	------------------------------------	---------------------------------------	------------------	------------------



FAF to MAP 5.6 NM					
Knots	60	90	120	150	180
Min:Sec	5:36	3:44	2:48	2:14	1:52



CATEGORY	A	B	C	D	E
S-ILS 13	*558/24 200 (200-½)				558/24 200 (200-½)
S-LOC 13	860/24	502 (500-½)	860/50	502 (500-1)	860/60 502 (500-1¼)
CIRCLING	860-1	495 (500-1)	860-1½ 495 (500-1½)	920-2 555 (600-2)	1080-2½ 715 (800-2½)

SC-2, 03 DEC 2020 to 31 DEC 2020

SC-2, 03 DEC 2020 to 31 DEC 2020