

WAAS CH 61100 W13A	APP CRS 131°	Rwy Idg 9200 TDZE 358 Apt Elev 366
--	------------------------	---

RNAV (GPS) RWY 13
EAST TEXAS RGNL (GGG)

RNP APCH.

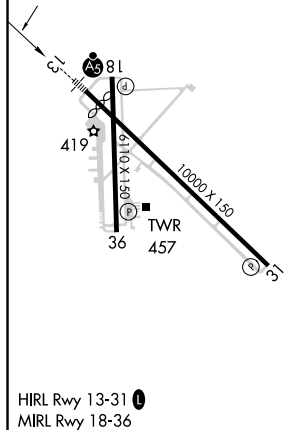
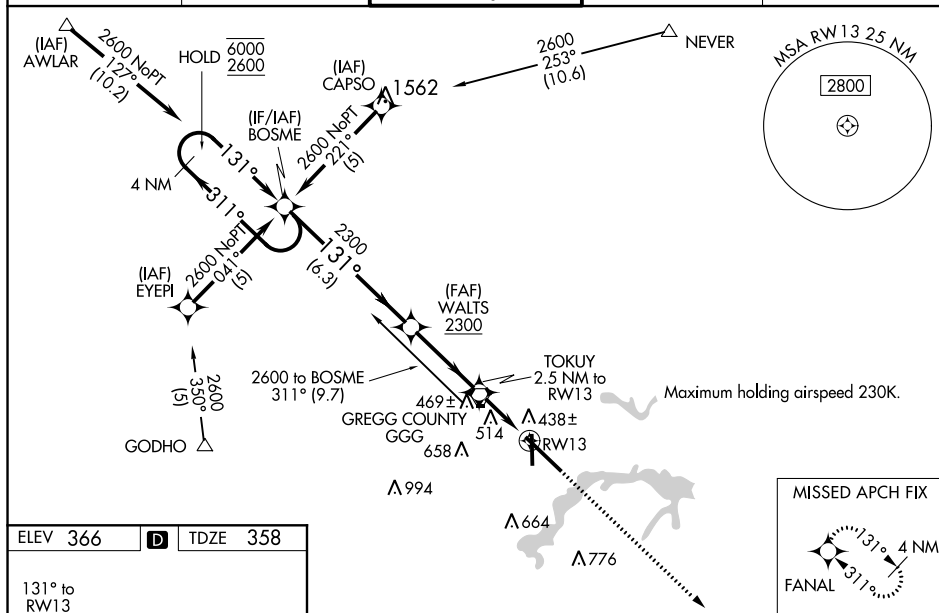
V Baro-VNAV NA win using Gilmer altimeter setting. For uncompensated Baro-VNAV systems, procedure NA below -15°C or above 54°C. VDP NA when using Gilmer altimeter setting. For inop ALS, increase LPV Cat E visibility to RVR 4000, LNAV/VNAV all Cats visibility to RVR 5500, LNAV Cat A/B visibility to RVR 5500, and LNAV Cat D/E visibility to 1/4 SM. When local altimeter setting not received use Gilmer altimeter setting and increase LPV DA to 671 feet; increase LNAV/VNAV DA to 785 feet; increase all MDA 60 feet, and LNAV Cat C visibility to RVR 5000, and Circling Cat E 1/4 SM. For inop ALS when using Gilmer altimeter setting, increase LPV all Cats visibility to RVR 4500, LNAV/VNAV Cat E visibility to 1/4 SM, and LNAV Cats A/B visibility to 5500, and LNAV Cats C/D/E visibility to 1/3 SM.

MALSR



MISSED APPROACH:
Climb to 3000 direct
FANAL and hold.

ATIS 119.65	LONGVIEW APP CON★ 128.75 379.15	EASTEX TOWER★ 119.2 (CTAF) 0377.05	GND CON 121.6	UNICOM 122.95
----------------	------------------------------------	---------------------------------------	------------------	------------------



4 NM Holding Pattern BOSME * LNAV only 3000 FANAL

6000 ← 311°
2600 → 131°

GP 3.00°
TCH 42°

WALTS 2300 TOKUY 2.5 NM to RW13

2300 1200 1.2 NM to RW13 RW13

6.3 NM 3.4 NM 1.3 1.2 NM

CATEGORY	A	B	C	D	E
LPV DA	612/24 254 (300-1/2)				
LNAV/VNAV DA	726/40 368 (400-3/4)				
LNAV MDA	780/24 422 (500-1/2)	780/40 422 (500-3/4)	780/50 422 (500-1)		
CIRCLING	860-1 494 (500-1)	860-1 1/2 494 (500-1 1/2)	920-2 554 (600-2)	1080-2 1/2 714 (800-2 1/2)	