

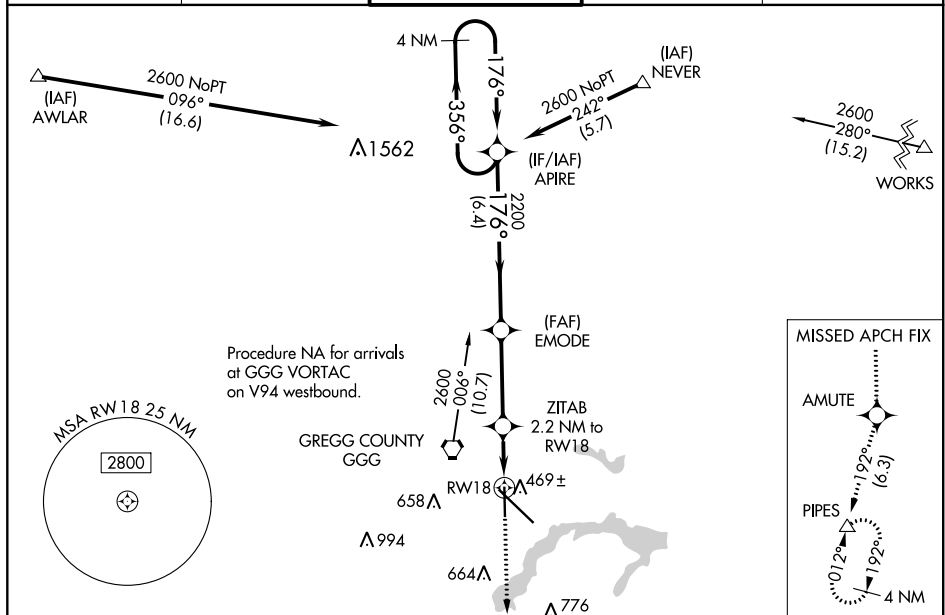
WAAS CH 99426 W18A	APP CRS 176°	Rwy Idg 6109 TDZE 356 Apt Elev 365
--	------------------------	---

RNAV (GPS) RWY 18
EAST TEXAS RGNL (GGG)

A Baro-VNAV NA when using Gilmer altimeter setting. For uncompensated Baro-VNAV systems, LNAV/VNAV NA below -15°C (5°F) or above 41°C (105°F). DME/DME RNP-0.3 NA. Visibility reduction by helicopters NA. When local altimeter setting not received, use Gilmer altimeter setting and increase all DA 59 feet and all MDA 60 feet, increase LPV visibility all Cats ¼ mile and LNAV/VNAV visibility all Cats ½ mile and LNAV visibility Cat C and D ¼ mile.

MISSED APPROACH:
Climb to 2400 direct
AMUTE and on track
192° to PIPES and hold.

ATIS 119.65	LONGVIEW APP CON* 128.75 379.15	EASTEX TOWER* 119.2 (CTAF) 0377.05	GND CON 121.6	UNICOM 122.95
-----------------------	---	--	-------------------------	-------------------------



ELEV 365
D TDZE 356

176° to RW18

10000 X 150

TWR 457

36

419

81

13

4 NM Holding Pattern

APIRE

2600 ← 356°

176° →

176°

EMODE

2200

ZITAB* 2.2 NM to RW18

1 NM to * RW18

*1100

GP 3.00° TCH 53

6.4 NM

3.4 NM

1.2 NM

1.0

RW18

2400
↑

AMUTE
✦

tr 192°
△

*LNAV only

CATEGORY		A	B	C	D
LPV	DA	630-7 $\frac{1}{8}$ 274 (300-7 $\frac{1}{8}$)			
LNAV/VNAV	DA	652-1 296 (300-1)			
LNAV	MDA	720-1 364 (400-1)			
CIRCLING		860-1 495 (500-1)		860-1 $\frac{1}{2}$ 495 (500-1 $\frac{1}{2}$)	920-2 555 (600-2)

HIRL Rwy 13-31
MIRL Rwy 18-36

SC-2, 03 DEC 2020 to 31 DEC 2020