

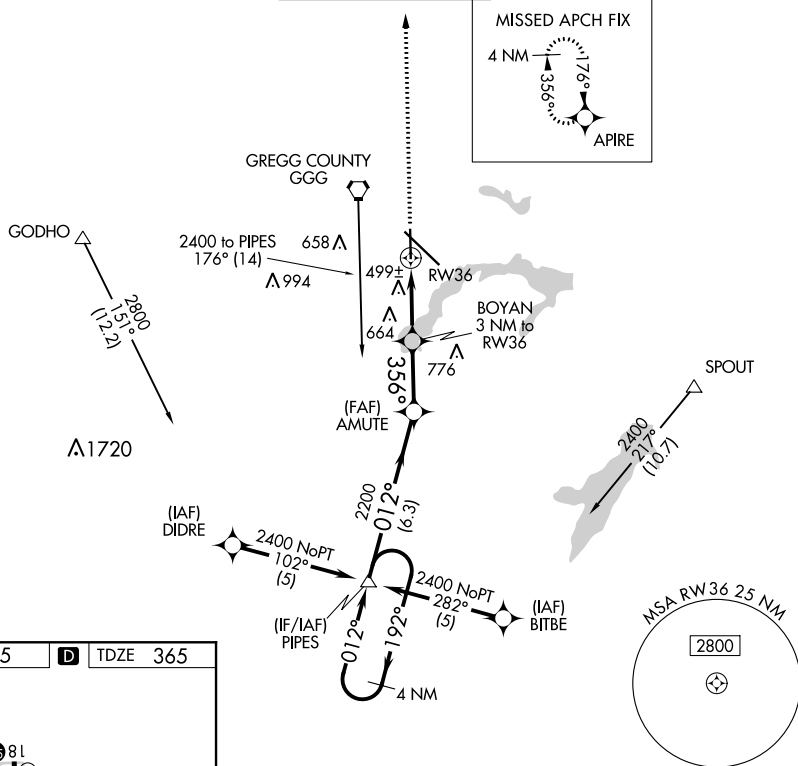
APP CRS <b>356°</b>	Rwy Idg TDZE Apt Elev	<b>6109</b> <b>365</b> <b>365</b>
------------------------	-----------------------------	---

RNAV (GPS) RWY 36  
EAST TEXAS RGNL (GGG)

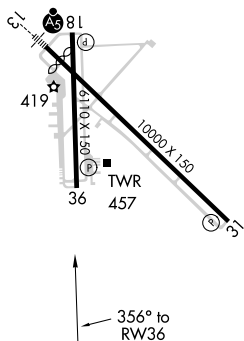
**T** DME/DME RNP-0.3 NA. Visibility reduction by helicopters NA.  
**A** When local altimeter setting not received, use Gilmer altimeter setting and increase all MDA 60 feet and LNAV Cat C and D visibility ¼ mile.

MISSED APPROACH: Climb to 2600  
direct APIRE and hold.

ATIS <b>119.65</b>	LONGVIEW APP CON* <b>128.75 379.15</b>	EASTEX TOWER* <b>119.2 (CTAF) 0 377.05</b>	GND CON <b>121.6</b>	UNICOM <b>122.95</b>
-----------------------	---	---	-------------------------	-------------------------



ELEV 365	<b>D</b>	TDZE 365
----------	----------	----------



2600 ↑	APIRE ✦				
CATEGORY	A	B	C	D	
RNAV MDA	760-1 395 (400-1)				760-1¼ 395 (400-1¼)
CIRCLING	860-1 495 (500-1)		860-1½ 495 (500-1½)	920-2 555 (600-2)	