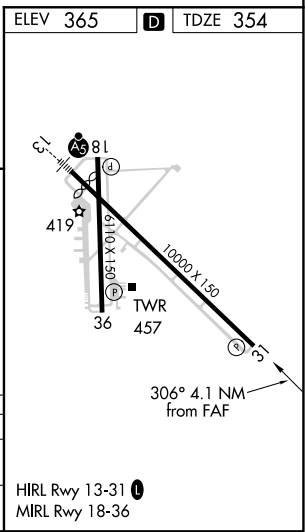
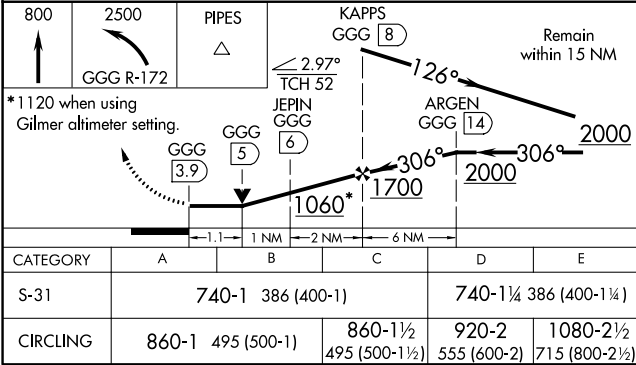
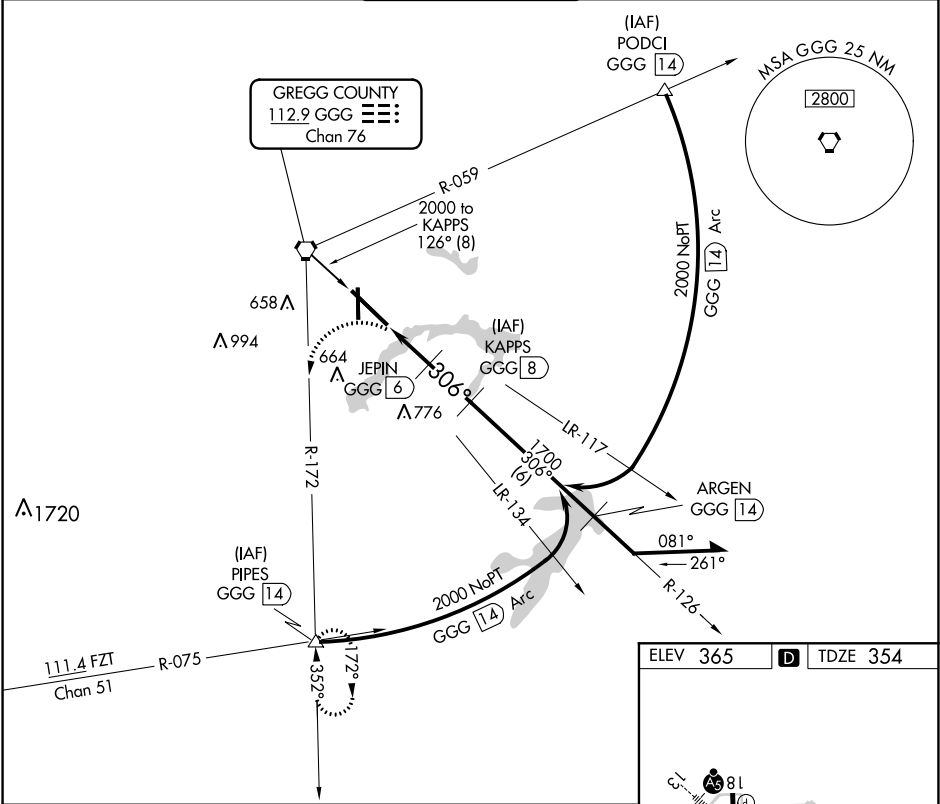


VORTAC GGG 112.9 Chan 76	APP CRS 306°	Rwy Idg TDZE Apt Elev	9200 354 365
--	------------------------	-----------------------------	---

VOR/DME or TACAN RWY 31
EAST TEXAS RGNL (GGG)

<p>⚠ When local altimeter setting not received, use Gilmer altimeter setting and increase all MDA 60 feet and increase S-31 Cats C/D/E and Circling Cat E visibility ¼ mile. VDP NA when using Gilmer altimeter setting.</p>	<p>MISSED APPROACH: Climb to 800, then climbing left turn to 2500 via GGG R-172 to PIPES Int and hold.</p>
--	--

ATIS 119.65	LONGVIEW APP CON* 128.75 379.15	EASTEX TOWER* 119.2 (CTAF) 377.05	GND CON 121.6	UNICOM 122.95
-----------------------	---	---	-------------------------	-------------------------



SC-2, 03 DEC 2020 to 31 DEC 2020

SC-2, 03 DEC 2020 to 31 DEC 2020