

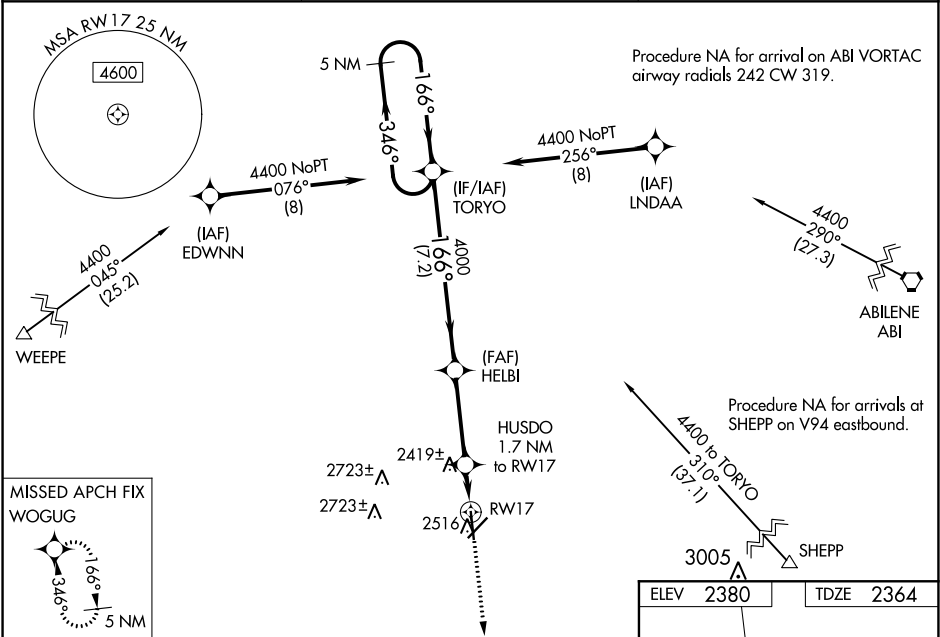
WAAS CH <b>42625</b> <b>W17A</b>	APP CRS <b>166°</b>	Rwy Idg TDZE Apt Elev	<b>5840</b> <b>2364</b> <b>2380</b>
--	------------------------	-----------------------------	---


RNAV (GPS) RWY 17  
AVENGER FIELD (SWW)

**⚠** When VGSI inop, Circling Rwy 22 NA at night. Baro-VNAV NA when using Snyder altimeter setting. For uncompensated Baro-VNAV systems, LNAV/VNAV NA below -19°C (-2°F) or above 29°C (84°F). When VGSI inop, Straight-in/Circling Rwy 17 procedure NA at night. DME/DME RNP-0.3 NA. Visibility reduction by helicopters NA. When local altimeter setting not received, use Snyder altimeter setting and increase all DA 72 feet and all MDA 80 feet. Increase LPV, LNAV/VNAV all Cats and LNAV Cats C and D visibility 1/8 mile.

MISSED APPROACH: Climb to 4400 direct WOGUG and hold.

AWOS-3 <b>119.025</b>	ABILENE APP CON <b>127.2 282.3</b>	UNICOM <b>122.8</b> (CTAF)
--------------------------	---------------------------------------	-------------------------------



<div>5 NM Holding Pattern</div> <div><div>4400 ← 346°</div><div>166° →</div><div>GP 3.00° TCH 40</div></div> <div>TORYO</div> <div>HELBI</div> <div>4000</div> <div>HUSDO 1.7 NM to RW17</div> <div>RW17</div> <div>4400 ↑</div> <div></div> <div>*LNAV only.</div>				
<div>7.2 NM</div> <div>3.4 NM</div> <div>1.7 NM</div> <div><div><div>*2920</div><div>4000</div></div></div>				
CATEGORY	A	B	C	D
LPV DA	2614-1 250 (300-1)			
LNAV/ VNAV DA	2619-1 255 (300-1)			
LNAV MDA	2680-1 316 (300-1)			
CIRCLING	2880-1	500 (500-1)	2880-1½ 500 (500-1½)	2940-2 560 (600-2)

